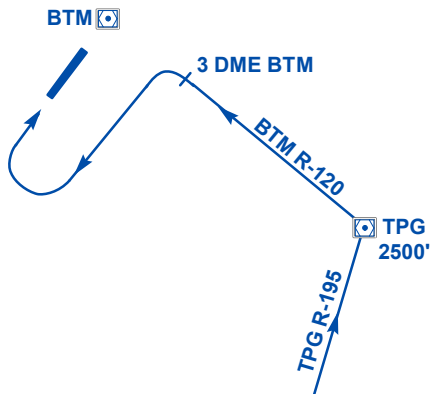


**BATAM AIRPORT - RUNWAY 04 AND 22
STANDARD INSTRUMENT ARRIVAL (STAR)**

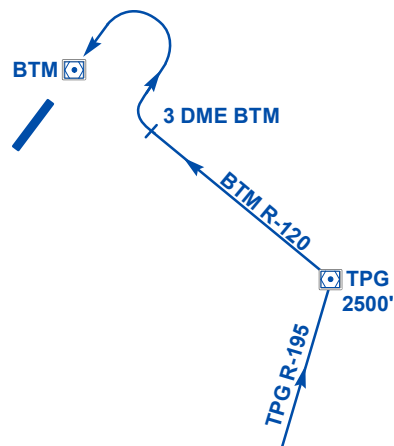
RUNWAY 04



**PARDI 1C ARR (GOLF 579 WEST/EASTBOUND)
(FROM JAKARTA)**

Proceed on TPG R-195, descending to 2 500ft. Cross Tanjung Pinang control zone boundary (21 DME TPG) at or below 5 500ft and cross TPG VOR/DME at 2 500ft. After TPG VOR/DME proceed on BTM R-120 to cross BATAM 3 DME and turn left for downwind Runway 04.

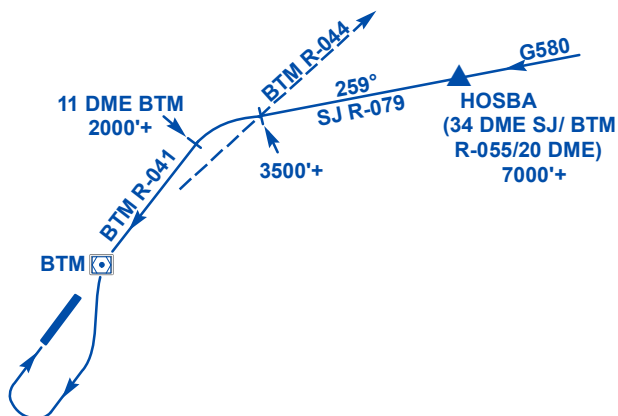
RUNWAY 22



**PARDI 1D ARR (GOLF 579 WEST/EASTBOUND)
(FROM JAKARTA)**

Proceed on TPG R-195, descending to 2 500ft. Cross Tanjung Pinang control zone boundary (21 DME TPG) at or below 5 500ft and cross TPG VOR/DME at 2 500ft. After TPG VOR/DME proceed on BTM R-120 to cross BATAM 3 DME and turn right for downwind Runway 22.

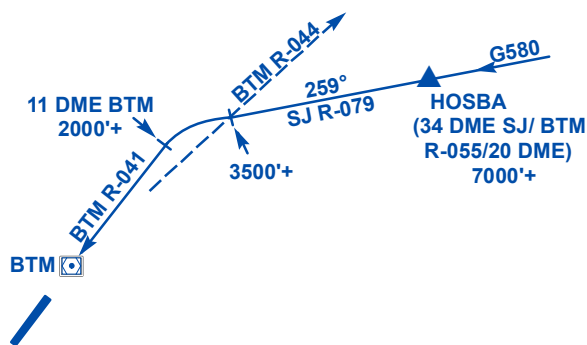
RUNWAY 04



**HOSBA 1C ARR (GOLF 580 WESTBOUND)
(FROM MATAK/NATUNA)**

Cross HOSBA (SINJON R-079/34 DME) at or above 7 000ft. At HOSBA track 259° (SINJON R-079) descending to cross BTM R-044 at or above 3 500ft. On intercepting BTM R-044 turn left to intercept BTM R-041. Cross BATAM 11 DME at or above 2 000ft. At BTM VOR/DME turn left to join downwind for Runway 04.

RUNWAY 22



**HOSBA 1D ARR (GOLF 580 WESTBOUND)
(FROM MATAK/NATUNA)**

Cross HOSBA (SINJON R-079/34 DME) at or above 7 000ft. At HOSBA track 259° (SINJON R-079) descending to cross BTM R-044 at or above 3 500ft. On intercepting BTM R-044 turn left to intercept BTM R-041. Cross BATAM 11 DME at or above 2 000ft. Then commence approach on Runway 22.