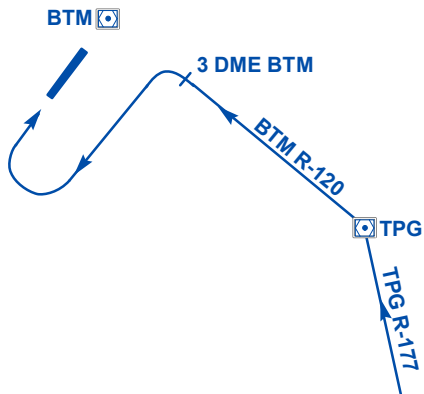


**BATAM AIRPORT - RUNWAY 04 AND 22
STANDARD INSTRUMENT ARRIVAL (STAR)**

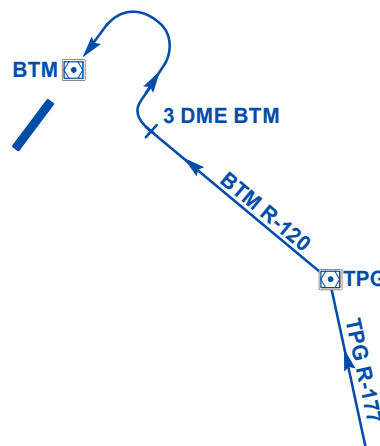
RUNWAY 04



**SINGKEP 1C ARR
(BRAVO 469/WHISKEY 24 WESTBOUND)
(FROM PALEMBANG/SINGKEP)**

Proceed on TPG R-177, descending to 2 500ft. Cross Tanjung Pinang control zone boundary (26 DME TPG) at or below 5 500ft and cross TPG VOR/DME at 2 500ft. After TPG VOR/DME proceed on BTM R-120 to BATAM 3 DME and turn left downwind Runway 04.

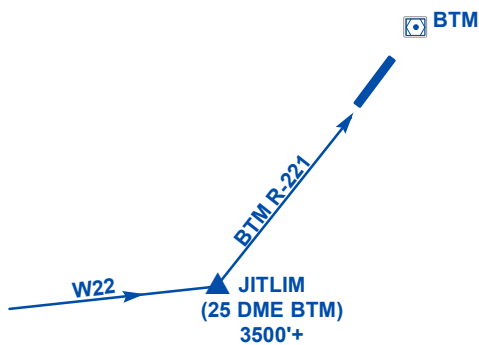
RUNWAY 22



**SINGKEP 1D ARR
(BRAVO 469/WHISKEY 24 WESTBOUND)
(FROM PALEMBANG/SINGKEP)**

Proceed on TPG R-177, descending to 2 500ft. Cross Tanjung Pinang control zone boundary (26 DME TPG) at or below 5 500ft and cross TPG VOR/DME at 2 500ft. After TPG VOR/DME proceed on BTM R-120 to BATAM 3 DME and turn right downwind Runway 22.

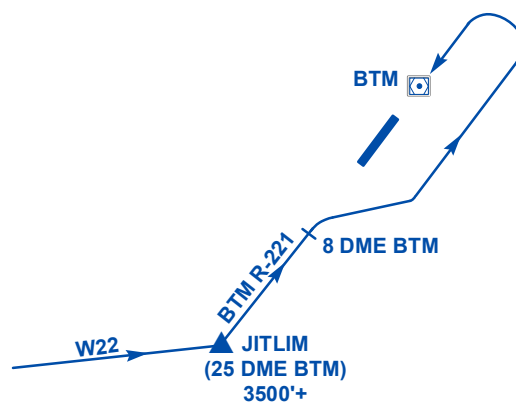
RUNWAY 04



**JITLIM 1C ARR (WHISKEY 22 EASTBOUND)
(FROM PEKANBARU)**

Cross JITLIM (BTM R-221/25DME) at or above 3 500ft. Proceed on BTM R-221 and commence approach.

RUNWAY 22



**JITLIM 1D ARR (WHISKEY 22 EASTBOUND)
(FROM PEKANBARU)**

Cross JITLIM (BTM R-221/25DME) at or above 3 500ft. Proceed on BTM R-221 and at BATAM 8 DME turn right to join downwind Runway 22.