

**STANDARD ARRIVAL CHART
RNAV (GNSS) -
INSTRUMENT (STAR)**

ACC 133.25
APP 124.05
119.3
TWR 118.6 / 118.25

TRANSITION ALTITUDE
11 000ft

D-ATIS AP ID-WSSS
ARR 128.025

**SINGAPORE/Singapore Changi
RWY 20R/C/L
TEBUN ONE BRAVO ARRIVAL
TEBUN 1B**

ELEV, ALT IN FEET
BEARINGS, TRACKS AND
RADIALS ARE MAGNETIC
VAR 0°23'E (2020)

DISTANCES IN NM

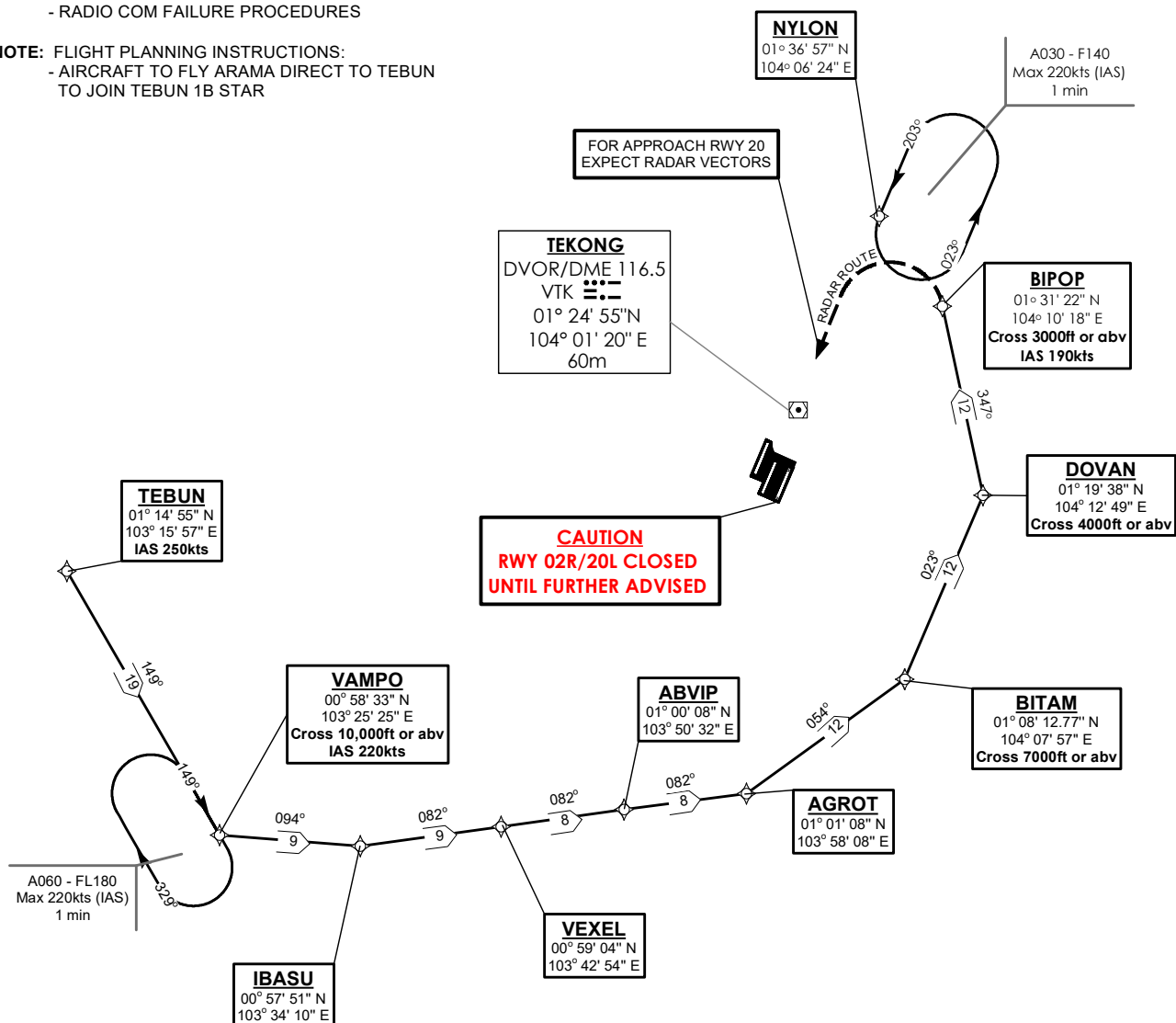
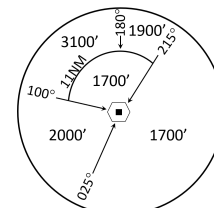
CAUTION: RWY 02R/20L CLOSED UNTIL FURTHER ADVISED

NOTE: RADAR REQUIRED

NOTE: RNAV-1 NAVIGATION SPECIFICATION GNSS REQUIRED

NOTE: REFER TO BACK PAGE FOR
- FORMAL AND TABULAR DESCRIPTIONS
- RADIO COM FAILURE PROCEDURES

NOTE: FLIGHT PLANNING INSTRUCTIONS:
- AIRCRAFT TO FLY ARAMA DIRECT TO TEBUN
TO JOIN TEBUN 1B STAR



NOT TO SCALE