

**STANDARD ARRIVAL CHART
RNAV (GNSS) -
INSTRUMENT (STAR)**

ACC 134.4
APP 124.05
119.3
TWR 118.6 / 118.25

TRANSITION ALTITUDE
11 000ft

D-ATIS AP ID-WSSS
128.025

**SINGAPORE/Singapore Changi
RWY 02L/C/R
REPOV TWO ALPHA ARRIVAL
REPOV 2A**

ELEV, ALT IN FEET
BEARINGS, TRACKS AND
RADIALS ARE MAGNETIC
VAR 0°23'E (2020)

DISTANCES IN NM

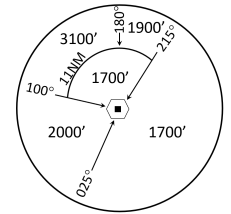
CAUTION: RWY 02R/20L CLOSED UNTIL FURTHER ADVISED

NOTE: RADAR REQUIRED

NOTE: RNAV-1 NAVIGATION SPECIFICATION GNSS REQUIRED

NOTE: REFER TO BACK PAGE FOR
- FORMAL AND TABULAR DESCRIPTIONS
- RADIO COM FAILURE PROCEDURES

TEKONG
DVOR/DME 116.5
VTK
01° 24' 55" N
104° 01' 20" E
60m



MSA 25 NM
from TEKONG DVOR

**CAUTION
RWY 02R/20L CLOSED
UNTIL FURTHER ADVISED**

FOR APPROACH RWY 02
EXPECT RADAR VECTORS

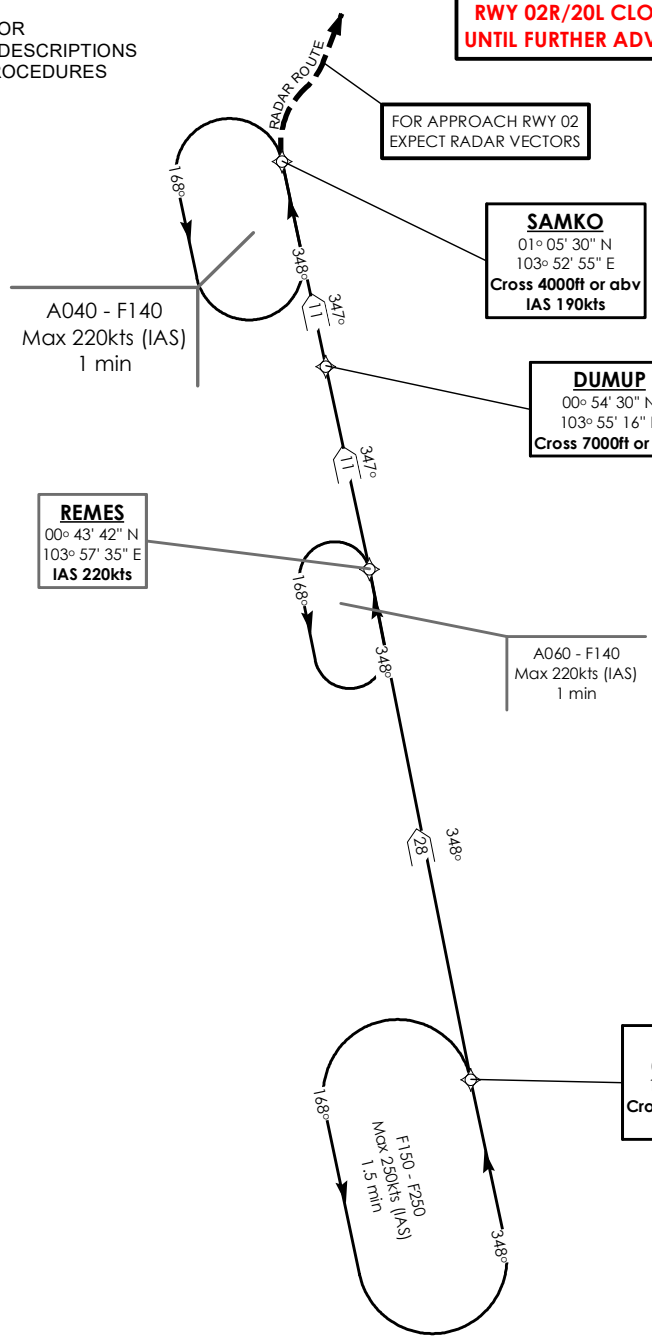
SAMKO
01° 05' 30" N
103° 52' 55" E
Cross 4000ft or abv
IAS 190kts

DUMUP
00° 54' 30" N
103° 55' 16" E
Cross 7000ft or abv

REMES
00° 43' 42" N
103° 57' 35" E
IAS 220kts

A060 - F140
Max 220kts (IAS)
1 min

REPOV
00° 16' 23" N
104° 03' 00" E
Cross FL210 or blw
IAS 250kts



NOT TO SCALE