

**STANDARD ARRIVAL CHART  
RNAV (GNSS) -  
INSTRUMENT (STAR)**

ACC 133.25  
APP 124.05  
119.3  
TWR 118.6 / 118.25

TRANSITION ALTITUDE  
11 000ft

D-ATIS AP ID-WSSS  
ARR 128.025

**SINGAPORE/Singapore Changi  
RWY 20R/C/L  
ASUNA TWO BRAVO ARRIVAL  
ASUNA 2B**

ELEV, ALT IN FEET  
BEARINGS, TRACKS AND  
RADIALS ARE MAGNETIC  
VAR 0°23'E (2020)

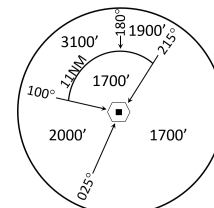
DISTANCES IN NM

**CAUTION: RWY 02R/20L CLOSED UNTIL FURTHER ADVISED**

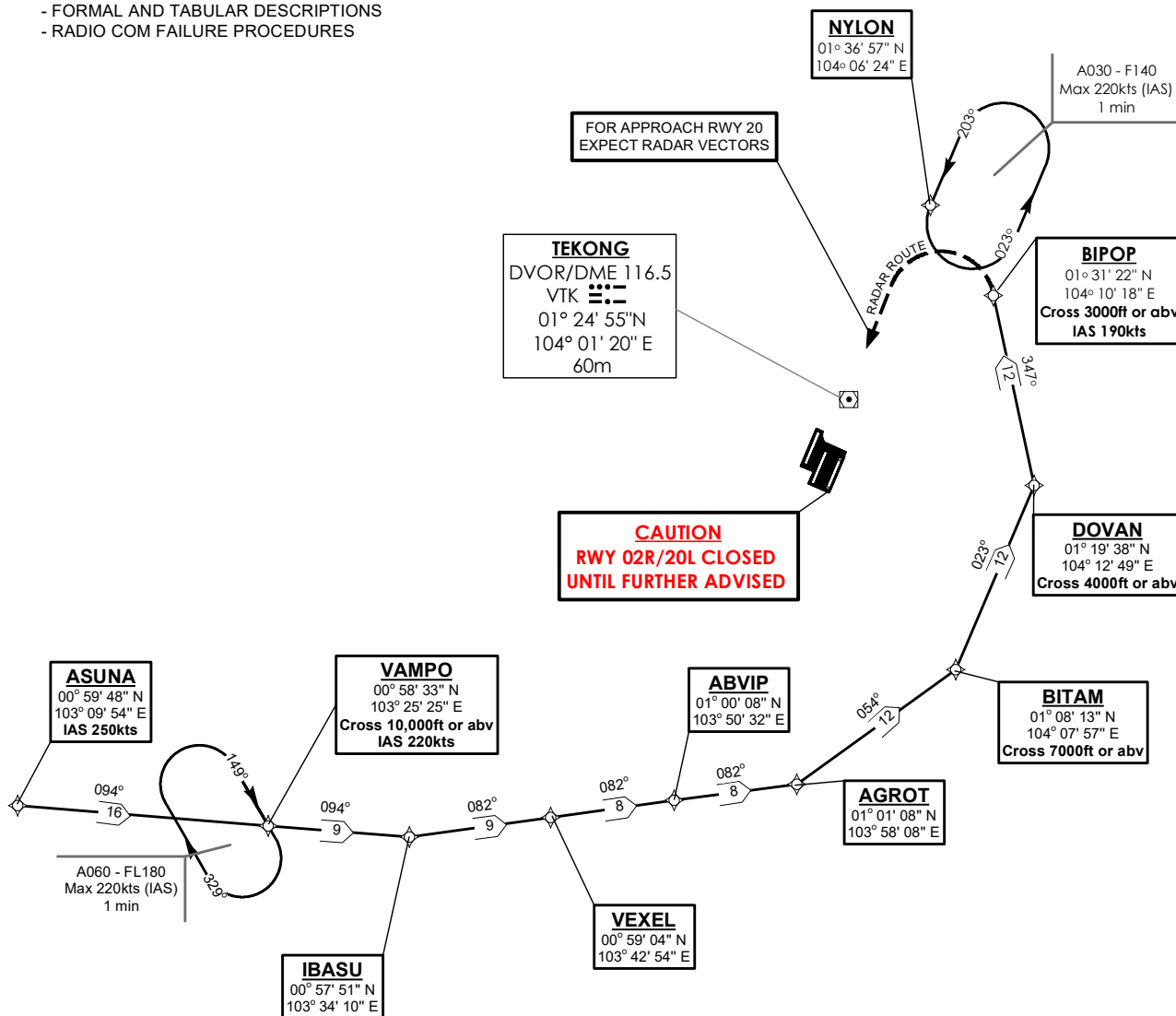
**NOTE: RADAR REQUIRED**

**NOTE: RNAV-1 NAVIGATION SPECIFICATION GNSS REQUIRED**

**NOTE: REFER TO BACK PAGE FOR**  
- FORMAL AND TABULAR DESCRIPTIONS  
- RADIO COM FAILURE PROCEDURES



MSA 25 NM  
from TEKONG DVOR



NOT TO SCALE