

STANDARD ARRIVAL CHART
RNAV (GNSS) -
INSTRUMENT (STAR)

ACC 133.25
 APP 124.05
 119.3
 TWR 118.6 / 118.25

TRANSITION ALTITUDE
 11 000ft

D-ATIS AP ID-WSSS
 ARR 128.025

SINGAPORE/Singapore Changi
RWY 02L/C/R
ASUNA TWO ALPHA ARRIVAL
ASUNA 2A

ELEV, ALT IN FEET
 BEARINGS, TRACKS AND
 RADIALS ARE MAGNETIC
 VAR 0°23'E (2020)

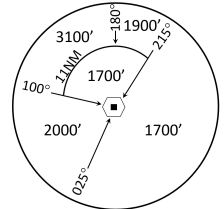
DISTANCES IN NM

CAUTION: RWY 02R/20L CLOSED UNTIL FURTHER ADVISED

NOTE: RADAR REQUIRED

NOTE: RNAV-1 NAVIGATION SPECIFICATION GNSS REQUIRED

NOTE: REFER TO BACK PAGE FOR
 - FORMAL AND TABULAR DESCRIPTIONS
 - RADIO COM FAILURE PROCEDURES

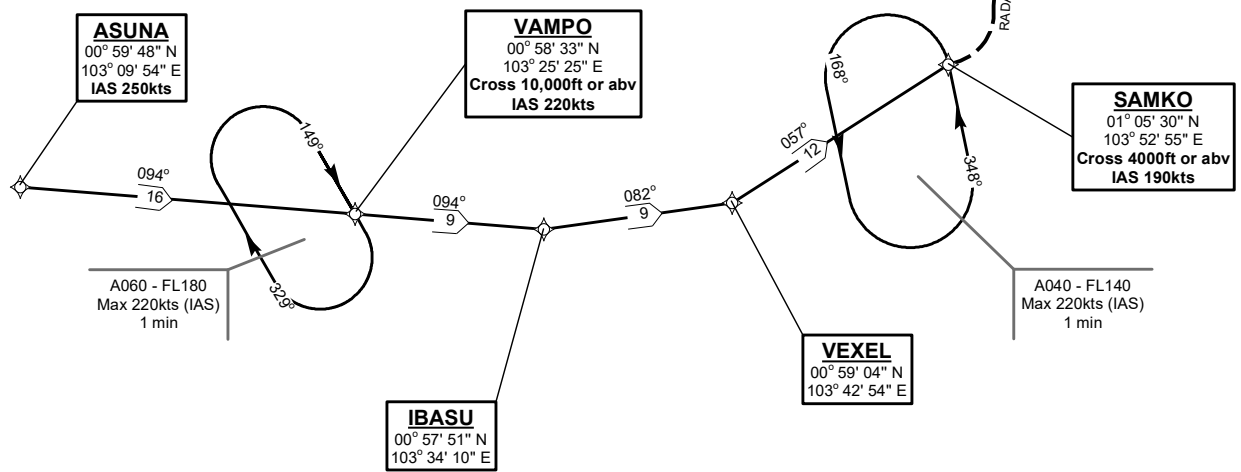


MSA 25 NM
 from TEKONG DVOR

CAUTION
RWY 02R/20L CLOSED
UNTIL FURTHER ADVISED

TEKONG
 DVOR/DME 116.5
 VTK
 01° 24' 55" N
 104° 01' 20" E
 60m

FOR APPROACH RWY 02
 EXPECT RADAR VECTORS



NOT TO SCALE