

**STANDARD DEPARTURE CHART
RNAV (GNSS) -
INSTRUMENT (SID)**

TWR 118.6 / 118.25
APP 120.3
ACC 133.8

TRANSITION ALTITUDE
11 000ft

D-ATIS AP ID-WSSS
128.6

**SINGAPORE/Singapore Changi
RWY 20L
MERSING DEPARTURES
VMR 1D**

ELEV, ALT IN FEET
BEARINGS, TRACKS AND
RADIALS ARE MAGNETIC
VAR 0°23'E (2022)

DISTANCES IN NM

GENERAL INFORMATION

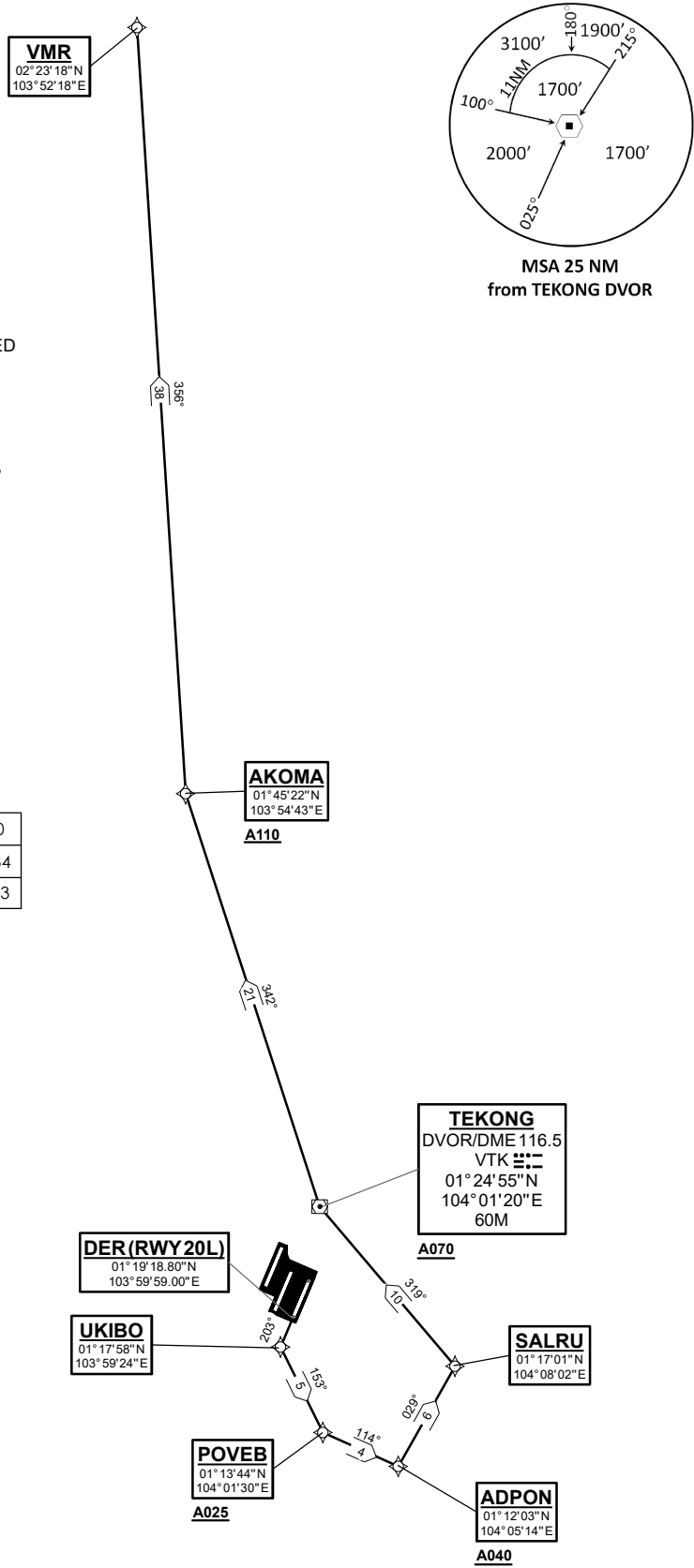
**INITIAL CLIMB
3000FT**

- CAUTION: RWY 02R/20L CLOSED UNTIL FURTHER ADVISED**
- NOTE:** RADAR REQUIRED
- NOTE:** RNAV-1 NAVIGATION SPECIFICATION GNSS REQUIRED
- NOTE:** ACFT UNABLE TO FLY THE SID PROFILE SHALL INFORM ATC PRIOR TO DEPARTURE AND EXPECT RADAR VECTORING IF NECESSARY
- NOTE:** WHEN TAKEN OFF THE SID, AS INSTRUCTED BY ATC, REFER TO ENR 1.5, SECTION 3, PARAGRAPH 3.4.3 - FOR RWY 20L MINIMUM CLIMB GRADIENT
- NOTE:** REFER TO BACK PAGE FOR
 - FORMAL AND TABULAR DESCRIPTIONS
 - RADIO COM FAILURE PROCEDURES

PROCEDURE INFORMATION

SID SHALL NOT EXCEED IAS 230KTS UNTIL PASSING 4000FT AMSL AND NOT EXCEED IAS 250KTS UNTIL PASSING 10000FT AMSL.
CRUISING LEVELS WILL BE ISSUED AFTER TAKE-OFF BY SINGAPORE RADAR.
SID SHALL BE ON A MINIMUM CLIMB GRADIENT OF 9% UNTIL REACHING OR PASSING 2500FT, THEREAFTER 3.3%.

| | | | | | | |
|-------------------|-----|-----|------|------|------|------|
| GND SPEED - KNOTS | 75 | 100 | 150 | 200 | 250 | 300 |
| 9% V/V (fpm) | 684 | 911 | 1367 | 1823 | 2279 | 2734 |
| 3.3% V/V (fpm) | 251 | 334 | 501 | 668 | 835 | 1003 |



NOT TO SCALE