

**STANDARD DEPARTURE CHART  
RNAV (GNSS) -  
INSTRUMENT (SID)**

TWR 118.6 / 118.25  
APP 120.3  
ACC 133.8

TRANSITION ALTITUDE  
11 000ft

D-ATIS AP ID-WSSS  
128.6

**SINGAPORE/Singapore Changi  
RWY 20L  
VOVOS DEPARTURES  
VOVOS 1D**

**ELEV, ALT IN FEET**

BEARINGS, TRACKS AND  
RADIALS ARE MAGNETIC  
VAR 0°23'E (2020)

DISTANCES IN NM

**GENERAL INFORMATION**

**INITIAL CLIMB  
3000FT**

**CAUTION: RWY 02R/20L CLOSED UNTIL FURTHER ADVISED**

**NOTE:** RADAR REQUIRED

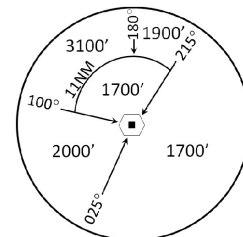
**NOTE:** RNAV-1 NAVIGATION SPECIFICATION GNSS REQUIRED

**NOTE:** ACFT UNABLE TO FLY THE SID PROFILE  
SHALL INFORM ATC PRIOR TO DEPARTURE AND  
EXPECT RADAR VECTORING IF NECESSARY

**NOTE:** WHEN TAKEN OFF THE SID, AS INSTRUCTED BY ATC,  
REFER TO ENR 1.5, SECTION 3, PARAGRAPH 3.4.3  
- FOR RWY 20L MINIMUM CLIMB GRADIENT

**NOTE:** REFER TO BACK PAGE FOR  
- FORMAL AND TABULAR DESCRIPTIONS  
- RADIO COM FAILURE PROCEDURES

**NOTE:** VOVOS SID WILL NOT BE AVAILABLE FOR  
FLIGHT PLANNING UNTIL FURTHER ADVISED



MSA 25 NM  
from TEKONG DVOR

**PROCEDURE INFORMATION**

SID SHALL NOT EXCEED IAS 230KTS UNTIL  
PASSING 4000FT AMSL AND NOT EXCEED  
IAS 250KTS UNTIL PASSING 10000FT AMSL.

CRUISING LEVELS WILL BE ISSUED AFTER TAKE-OFF  
BY SINGAPORE RADAR.

SID SHALL BE ON A MINIMUM CLIMB GRADIENT OF 9%  
UNTIL REACHING OR PASSING 2500FT, THEREAFTER 3.3%.

GND SPEED - KNOTS	75	100	150	200	250	300
9% V/V (fpm)	684	911	1367	1823	2279	2734
3.3% V/V (fpm)	251	334	501	668	835	1003

**TEKONG**  
DVOR/DME 116.5  
VTK  
01° 24' 55"N  
104° 01' 20" E  
60m

**DER (RWY 20L)**  
01° 19' 18.80"N  
103° 59' 59.00"E

**UKIBO**  
01° 17' 58"N  
103° 59' 24"E

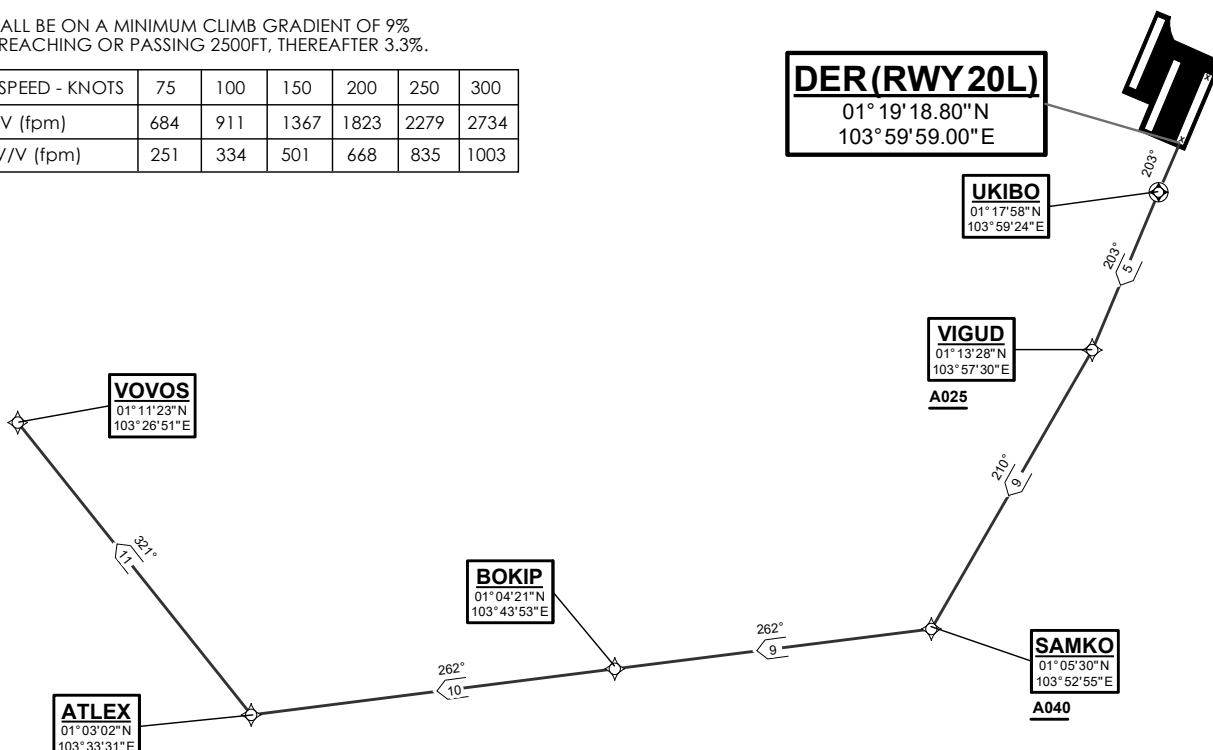
**VIGUD**  
01° 13' 28"N  
103° 57' 30"E  
A025

**SAMKO**  
01° 05' 30"N  
103° 52' 55"E  
A040

**BOKIP**  
01° 04' 21"N  
103° 43' 53"E

**VOVOS**  
01° 11' 23"N  
103° 26' 51"E

**ATLEX**  
01° 03' 02"N  
103° 33' 31"E



NOT TO SCALE