

**STANDARD DEPARTURE CHART  
RNAV (GNSS) -  
INSTRUMENT (SID)**

TWR 118.6 / 118.25  
APP 120.3  
ACC 133.8

TRANSITION ALTITUDE  
11 000ft

D-ATIS AP ID-WSSS  
128.6

**SINGAPORE/Singapore Changi  
RWY 20C  
VOVOS DEPARTURES  
VOVOS 1B**

**ELEV, ALT IN FEET**

BEARINGS, TRACKS AND  
RADIALS ARE MAGNETIC  
VAR 0°23'E (2020)

DISTANCES IN NM

**GENERAL INFORMATION**

**INITIAL CLIMB  
3000FT**

**CAUTION: RWY 02R/20L CLOSED UNTIL FURTHER ADVISED**

**NOTE:** RADAR REQUIRED

**NOTE:** RNAV-1 NAVIGATION SPECIFICATION GNSS REQUIRED

**NOTE:** ACFT UNABLE TO FLY THE SID PROFILE  
SHALL INFORM ATC PRIOR TO DEPARTURE AND  
EXPECT RADAR VECTORING IF NECESSARY

**NOTE:** WHEN TAKEN OFF THE SID, AS INSTRUCTED BY ATC,  
REFER TO ENR 1.5, SECTION 3, PARAGRAPH 3.4.1  
- FOR RWY 20C MINIMUM CLIMB GRADIENT

**NOTE:** REFER TO BACK PAGE FOR  
- FORMAL AND TABULAR DESCRIPTIONS  
- RADIO COM FAILURE PROCEDURES

**NOTE:** VOVOS SID WILL NOT BE AVAILABLE FOR  
FLIGHT PLANNING UNTIL FURTHER ADVISED

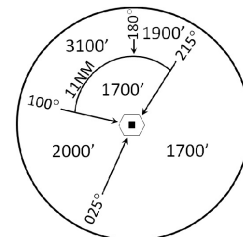
**PROCEDURE INFORMATION**

SID SHALL NOT EXCEED IAS 230KTS UNTIL  
PASSING AA001 AND NOT EXCEED  
IAS 250KTS UNTIL PASSING 10000FT AMSL.

CRUISING LEVELS WILL BE ISSUED AFTER TAKE-OFF  
BY SINGAPORE RADAR.

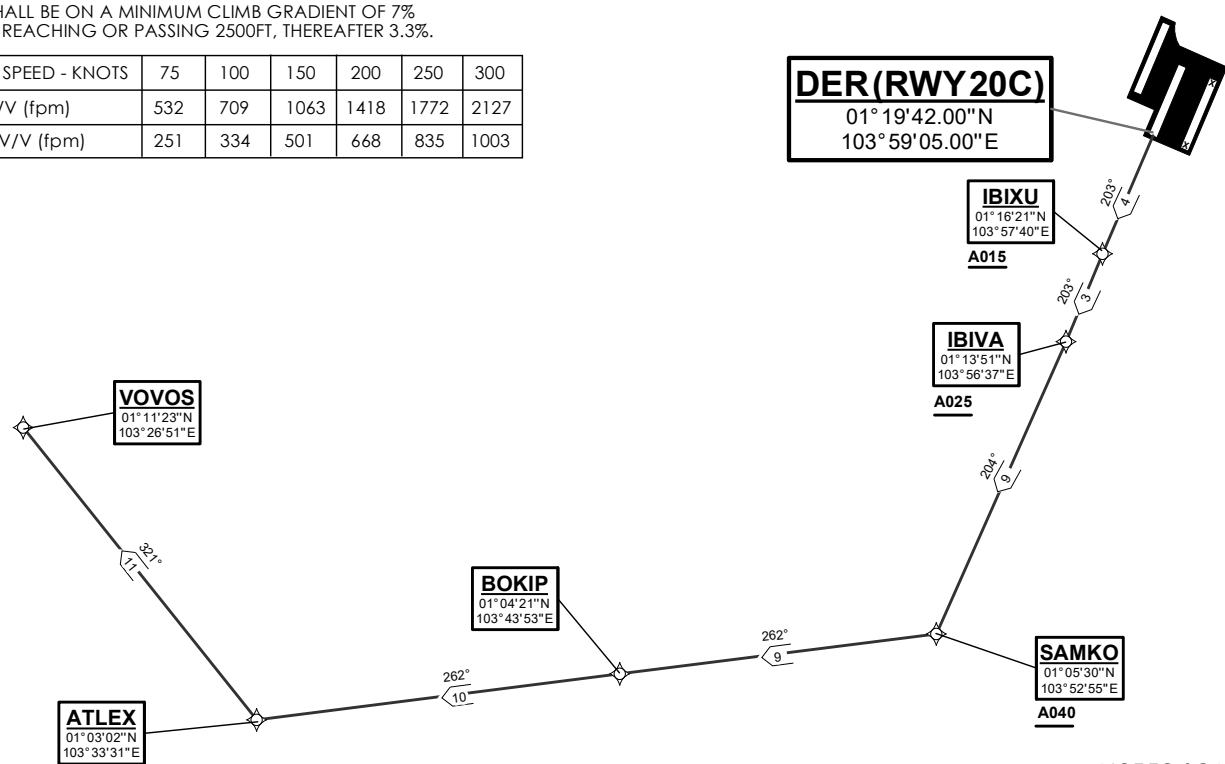
SID SHALL BE ON A MINIMUM CLIMB GRADIENT OF 7%  
UNTIL REACHING OR PASSING 2500FT, THEREAFTER 3.3%.

GND SPEED - KNOTS	75	100	150	200	250	300
7% V/V (fpm)	532	709	1063	1418	1772	2127
3.3% V/V (fpm)	251	334	501	668	835	1003



**TEKONG  
DVOR/DME 116.5  
VTK**  
01° 24' 55"N  
104° 01' 20" E  
60m

**DER (RWY 20C)**  
01° 19' 42.00"N  
103° 59' 05.00"E



NOT TO SCALE