

**STANDARD DEPARTURE CHART
RNAV (GNSS) -
INSTRUMENT (SID)**

TWR 118.6 / 118.25
APP 120.3
ACC 133.8

TRANSITION ALTITUDE
11 000ft

D-ATIS AP ID-WSSS
128.6

**SINGAPORE/Singapore Changi
RWY 02L
MERSING DEPARTURES
VMR 6E**

ELEV, ALT IN FEET
BEARINGS, TRACKS AND
RADIALS ARE MAGNETIC
VAR 0° 23'E (2020)

DISTANCES IN NM

GENERAL INFORMATION

**INITIAL CLIMB
3000FT**

CAUTION: RWY 02R/20L CLOSED UNTIL FURTHER ADVISED

NOTE: RADAR REQUIRED

NOTE: RNAV-1 NAVIGATION SPECIFICATION GNSS REQUIRED

NOTE: ACFT UNABLE TO FLY THE SID PROFILE
SHALL INFORM ATC PRIOR TO DEPARTURE AND
EXPECT RADAR VECTORING IF NECESSARY

NOTE: WHEN TAKEN OFF THE SID, AS INSTRUCTED BY ATC,
REFER TO ENR 1.5, SECTION 3, PARAGRAPH 3.2 [A]
- FOR RWY 02L MINIMUM CLIMB GRADIENT

NOTE: REFER TO BACK PAGE FOR
- FORMAL AND TABULAR DESCRIPTIONS
- RADIO COM FAILURE PROCEDURES

PROCEDURE INFORMATION

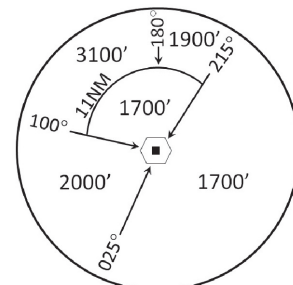
SID SHALL NOT EXCEED IAS 230KTS UNTIL
PASSING 4000FT AMSL AND NOT EXCEED
IAS 250KTS UNTIL PASSING 10000FT AMSL.

CRUISING LEVELS WILL BE ISSUED AFTER TAKE-OFF
BY SINGAPORE RADAR.

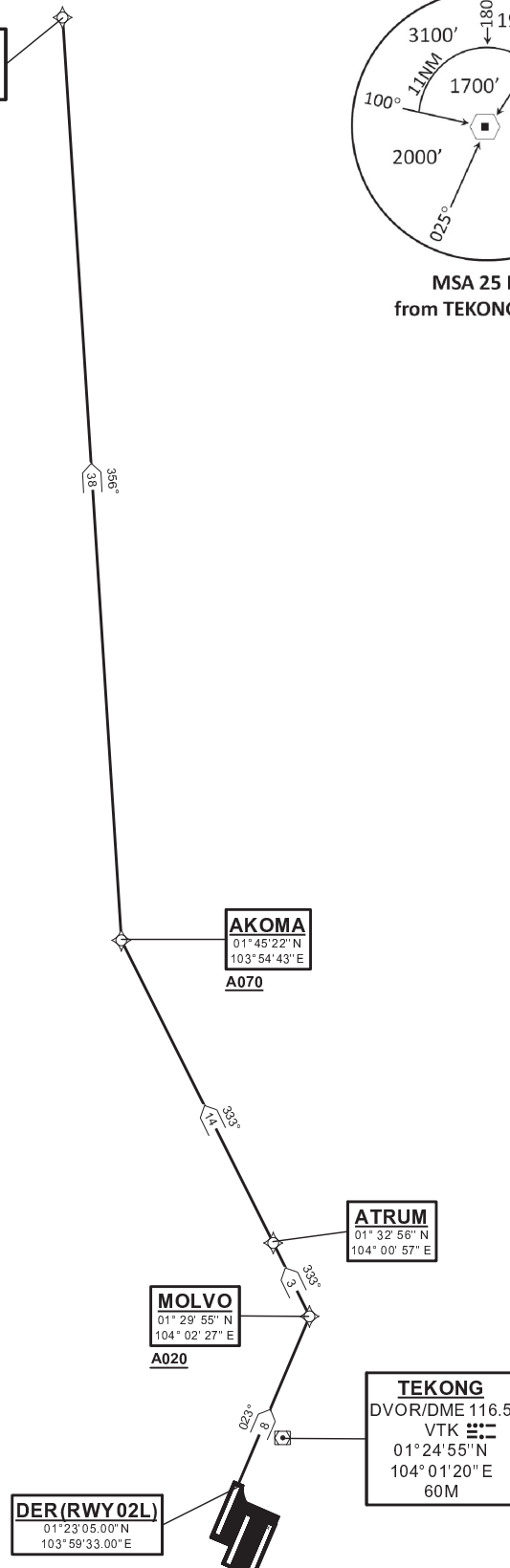
SID SHALL BE ON A MINIMUM CLIMB GRADIENT OF 5%
UNTIL REACHING OR PASSING 2500FT, THEREAFTER 3.3%.

GND SPEED - KNOTS	75	100	150	200	250	300
5% V/V (fpm)	380	506	760	1013	1266	1519
3.3% V/V (fpm)	251	334	501	668	835	1003

VMR
02° 23' 18" N
103° 52' 18" E



**MSA 25 NM
from TEKONG DVOR**



NOT TO SCALE