

**STANDARD DEPARTURE CHART  
RNAV (GNSS) -  
INSTRUMENT (SID)**

TWR 118.6 / 118.25  
APP 120.3  
ACC 133.8

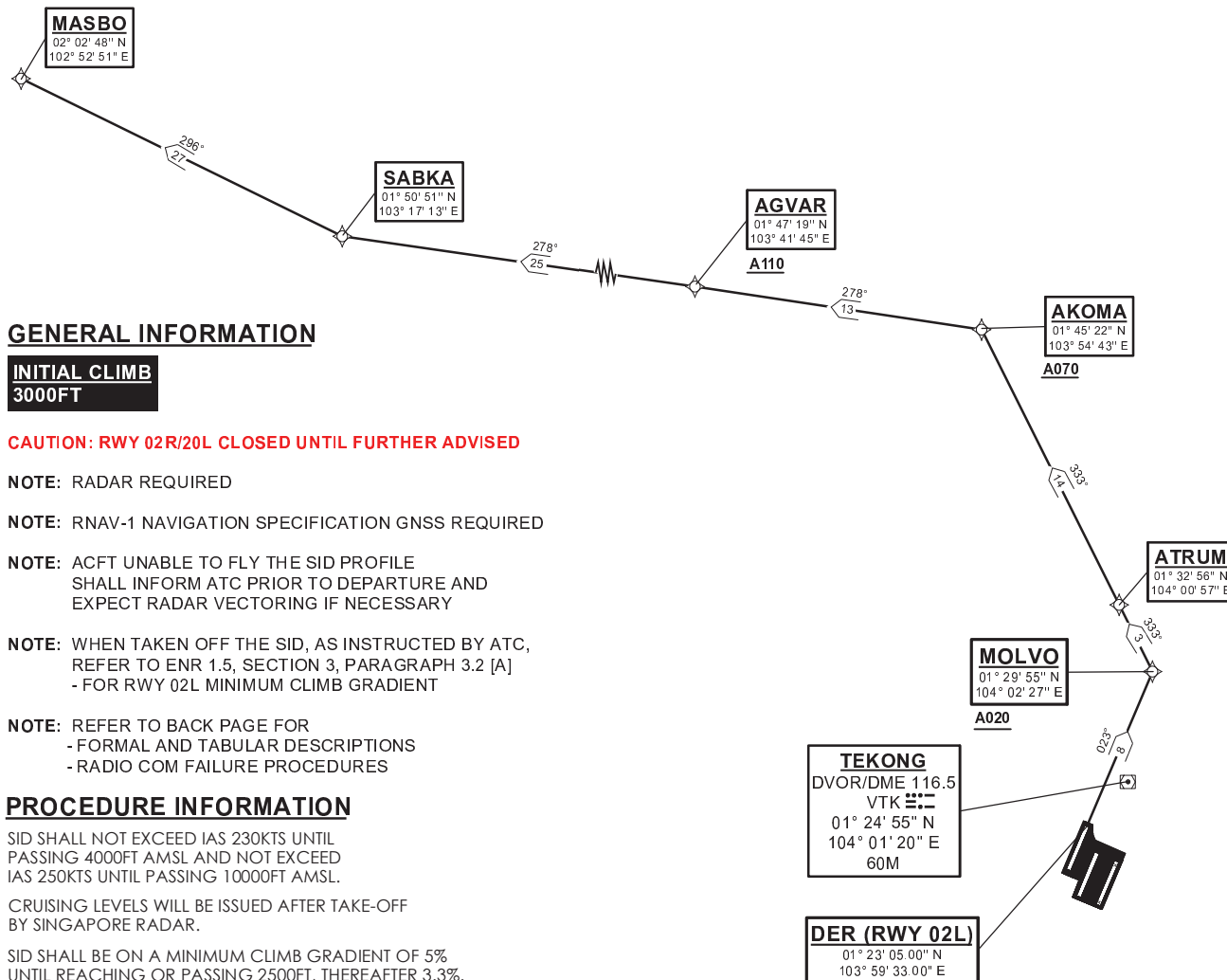
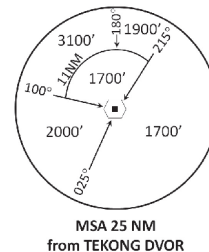
TRANSITION ALTITUDE  
11 000ft

D-ATIS AP ID-WSSS  
128.6

**SINGAPORE/Singapore Changi  
RWY 02L  
MASBO DEPARTURES  
MASBO 3E**

**ELEV, ALT IN FEET**  
BEARINGS, TRACKS AND  
RADIALS ARE MAGNETIC  
VAR 0°23'E (2022)

DISTANCES IN NM



**GENERAL INFORMATION**

**INITIAL CLIMB**  
3000FT

**CAUTION: RWY 02R/20L CLOSED UNTIL FURTHER ADVISED**

**NOTE:** RADAR REQUIRED

**NOTE:** RNAV-1 NAVIGATION SPECIFICATION GNSS REQUIRED

**NOTE:** ACFT UNABLE TO FLY THE SID PROFILE  
SHALL INFORM ATC PRIOR TO DEPARTURE AND  
EXPECT RADAR VECTORED IF NECESSARY

**NOTE:** WHEN TAKEN OFF THE SID, AS INSTRUCTED BY ATC,  
REFER TO ENR 1.5, SECTION 3, PARAGRAPH 3.2 [A]  
- FOR RWY 02L MINIMUM CLIMB GRADIENT

**NOTE:** REFER TO BACK PAGE FOR  
- FORMAL AND TABULAR DESCRIPTIONS  
- RADIO COM FAILURE PROCEDURES

**PROCEDURE INFORMATION**

SID SHALL NOT EXCEED IAS 230KTS UNTIL  
PASSING 4000FT AMSL AND NOT EXCEED  
IAS 250KTS UNTIL PASSING 10000FT AMSL.

CRUISING LEVELS WILL BE ISSUED AFTER TAKE-OFF  
BY SINGAPORE RADAR.

SID SHALL BE ON A MINIMUM CLIMB GRADIENT OF 5%  
UNTIL REACHING OR PASSING 2500FT, THEREAFTER 3.3%.

GND SPEED - KNOTS	75	100	150	200	250	300
5% V/V (fpm)	380	506	760	1013	1266	1519
3.3% V/V (fpm)	251	334	501	668	835	1003

NOT TO SCALE