

**STANDARD DEPARTURE CHART  
RNAV (GNSS) -  
INSTRUMENT (SID)**

TWR 118.6 / 118.25  
APP 120.3  
ACC 133.8

TRANSITION ALTITUDE  
11 000ft

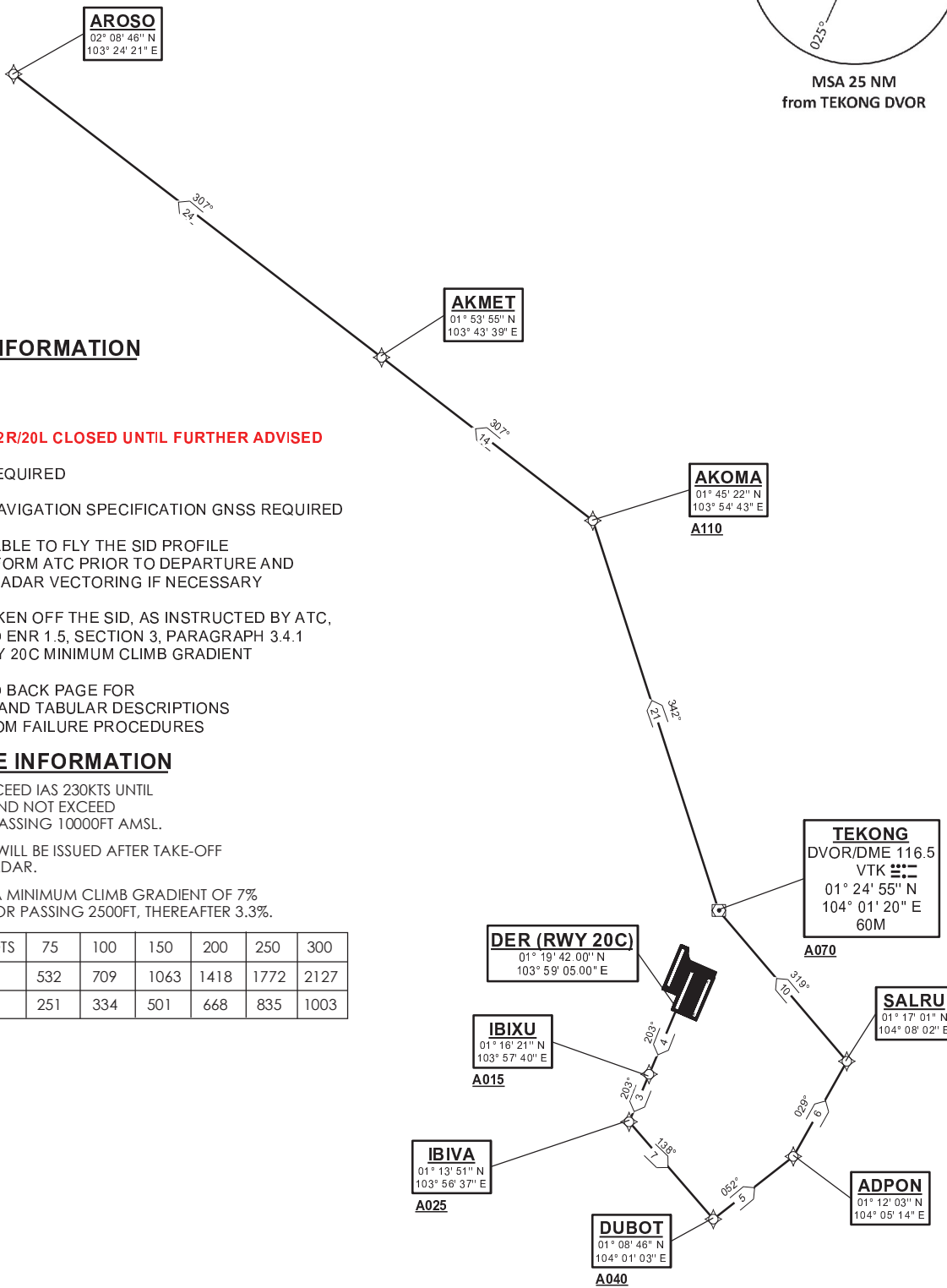
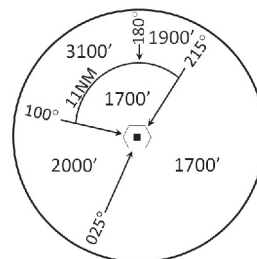
D-ATIS AP ID-WSSS  
128.6

**SINGAPORE/Singapore Changi  
RWY 20C  
AROSO DEPARTURES  
AROSO 5B**

ELEV, ALT IN FEET  
BEARINGS, TRACKS AND  
RADIALS ARE MAGNETIC  
VAR 0°23'E (2022)

NOT TO SCALE

DISTANCES IN NM



**GENERAL INFORMATION**

**INITIAL CLIMB  
3000FT**

**CAUTION: RWY 02R/20L CLOSED UNTIL FURTHER ADVISED**

**NOTE:** RADAR REQUIRED

**NOTE:** RNAV-1 NAVIGATION SPECIFICATION GNSS REQUIRED

**NOTE:** ACFT UNABLE TO FLY THE SID PROFILE  
SHALL INFORM ATC PRIOR TO DEPARTURE AND  
EXPECT RADAR VECTORED IF NECESSARY

**NOTE:** WHEN TAKEN OFF THE SID, AS INSTRUCTED BY ATC,  
REFER TO ENR 1.5, SECTION 3, PARAGRAPH 3.4.1  
- FOR RWY 20C MINIMUM CLIMB GRADIENT

**NOTE:** REFER TO BACK PAGE FOR  
- FORMAL AND TABULAR DESCRIPTIONS  
- RADIO COM FAILURE PROCEDURES

**PROCEDURE INFORMATION**

SID SHALL NOT EXCEED IAS 230KTS UNTIL  
PASSING 4000FT AND NOT EXCEED  
IAS 250KTS UNTIL PASSING 10000FT AMSL.

CRUISING LEVELS WILL BE ISSUED AFTER TAKE-OFF  
BY SINGAPORE RADAR.

SID SHALL BE ON A MINIMUM CLIMB GRADIENT OF 7%  
UNTIL REACHING OR PASSING 2500FT, THEREAFTER 3.3%.

|                   |     |     |      |      |      |      |
|-------------------|-----|-----|------|------|------|------|
| GND SPEED - KNOTS | 75  | 100 | 150  | 200  | 250  | 300  |
| 7% V/V (fpm)      | 532 | 709 | 1063 | 1418 | 1772 | 2127 |
| 3.3% V/V (fpm)    | 251 | 334 | 501  | 668  | 835  | 1003 |