

STANDARD DEPARTURE CHART
RNAV (GNSS) -
INSTRUMENT (SID)

TWR 118.6 / 118.25
 APP 120.3
 124.05
 ACC 133.8

TRANSITION ALTITUDE
 11 000ft

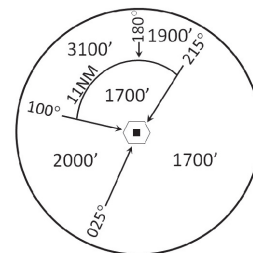
D-ATIS AP ID-WSSS
 128.6

SINGAPORE/Singapore Changi
RWY 02C
MERSING DEPARTURES
VMR 6A (R02C)

ELEV, ALT IN FEET
 BEARINGS, TRACKS AND
 RADIALS ARE MAGNETIC
 VAR 23°E (2020)

DISTANCES IN NM

VMR
 02° 23' 18" N
 103° 52' 18" E



MSA 25 NM
 from TEKONG DVOR

CAUTION: RWY 02R/20L CLOSED UNTIL FURTHER ADVISED

NOTE: RADAR REQUIRED

NOTE: RNAV-1 NAVIGATION SPECIFICATION
 GNSS REQUIRED

NOTE: CLOSE-IN OBSTACLES (AIRCRAFT UP TO 80FT)
 EXIST ON TAXIWAYS WEST OF RUNWAY 02C

NOTE: ACFT UNABLE TO FLY THE SID
 PROFILE SHALL INFORM ATC
 PRIOR TO DEPARTURE AND TO
 EXPECT RADAR VECTORING,
 IF NECESSARY

NOTE: WHEN TAKEN OFF THE SID,
 AS INSTRUCTED BY ATC,
 REFER TO ENR 1.5, SECTION 3,
 PARAGRAPH 3.3 [A] - FOR RWY 02C MINIMUM CLIMB GRADIENT

NOTE: REFER TO BACK PAGE FOR
 - FORMAL AND TABULAR DESCRIPTIONS
 - RADIO COM FAILURE PROCEDURES

GENERAL INFORMATION

INITIAL CLIMB
3000FT

ALL SIDs INCLUDE NOISE PREFERENTIAL ROUTES.

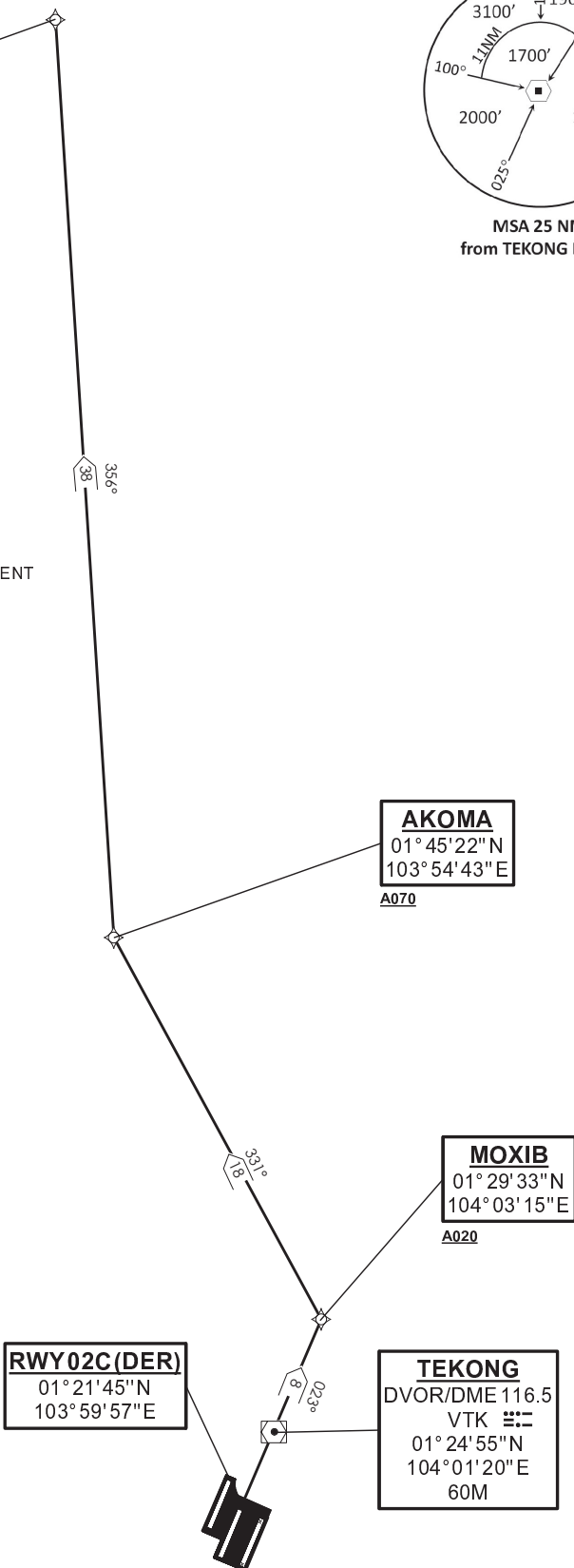
RWY 02C

SHALL NOT EXCEED IAS 230KTS UNTIL PASSING 4000FT AMSL AND
 NOT EXCEED IAS 250KTS UNTIL PASSING 10000FT AMSL.

CRUISING LEVELS WILL BE ISSUED AFTER TAKE-OFF
 BY SINGAPORE RADAR.

SID SHALL BE ON A MINIMUM CLIMB GRADIENT OF 5%
 UNTIL REACHING OR PASSING 2500FT, THEREAFTER 3.3%.

GND SPEED - KNOTS	75	100	150	200	250	300
5% V/V (fpm)	380	506	760	1013	1266	1519
3.3% V/V (fpm)	251	334	501	668	835	1003



AKOMA
 01° 45' 22" N
 103° 54' 43" E

A070

MOXIB
 01° 29' 33" N
 104° 03' 15" E

A020

RWY02C(DER)
 01° 21' 45" N
 103° 59' 57" E

TEKONG
 DVOR/DME 116.5
 VTK
 01° 24' 55" N
 104° 01' 20" E
 60M

NOT TO SCALE