

SINGAPORE/Singapore Changi RWY 02L/C/R UGEBO ONE ALPHA ARRIVAL UGEBO 1A

ACC 134.2
APP 124.05
TWR 118.6 / 118.25

D-ATIS AP ID-WSSW
128.025

TRANSITION ALTITUDE
11 000ft

STANDARD ARRIVAL CHART RNAV (GNSS) - INSTRUMENT (STAR)

ELEV. ALT IN FEET
BEARINGS, TRACKS AND
RADIALS ARE MAGNETIC
VAR 0°23'E (2020)

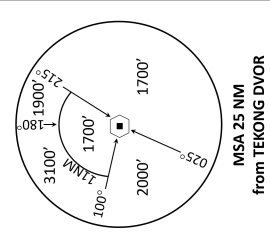
DISTANCES IN NM

CAUTION: RWY 02R/20L CLOSED UNTIL FURTHER ADVISED

NOTE: RADAR REQUIRED

NOTE: RNAV-1 NAVIGATION SPECIFICATION GNSS REQUIRED

NOTE: REFER TO BACK PAGE FOR
- FORMAL AND TABULAR DESCRIPTIONS
- RADIO COM FAILURE PROCEDURES



TEKONG
DVOR/DME 116.5
VTK
01° 24' 55" N
104° 01' 20" E
60m

CAUTION
RWY 02R/20L CLOSED
UNTIL FURTHER ADVISED

SAMKO
01° 05' 30" N
103° 52' 55" E

FOR APPROACH RWY 02
EXPECT RADAR VECTORS

VIMAL
01° 09' 42" N
104° 23' 53" E
Cross 10000ft or abv

KEXAS
01° 10' 19" N
104° 48' 18" E
Cross FL160 or b/w
IAS 220kts

GUNUD
01° 10' 42" N
105° 06' 18" E
IAS 250kts

SANAT
01° 07' 49" N
103° 59' 30" E
Cross 4000ft or abv
IAS 190kts

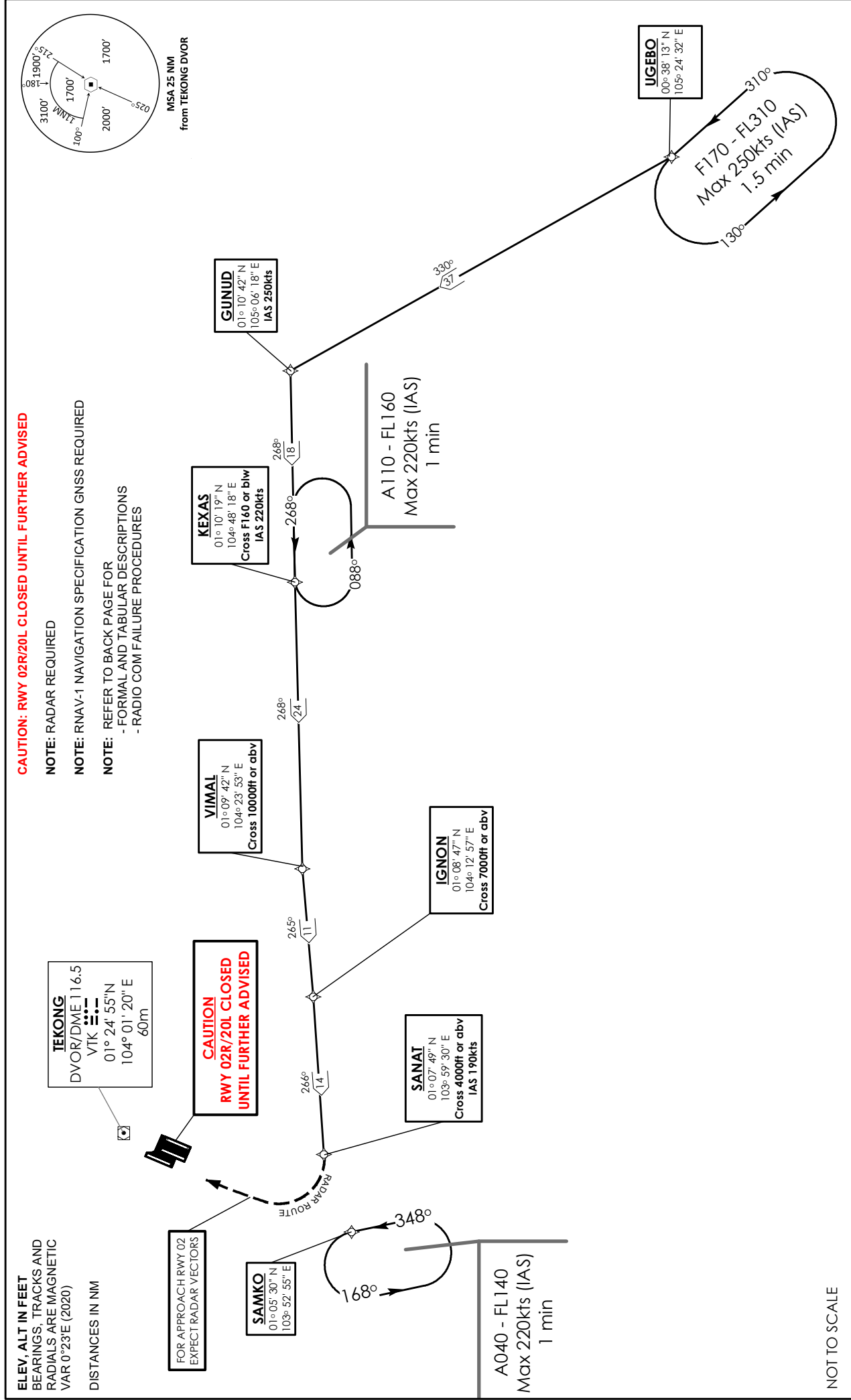
IGNON
01° 08' 47" N
104° 12' 57" E
Cross 7000ft or abv

A110 - FL160
Max 220kts (IAS)
1 min

A040 - FL140
Max 220kts (IAS)
1 min

UGEBO
00° 38' 13" N
105° 24' 32" E

F170 - FL310
Max 250kts (IAS)
1.5 min



NOT TO SCALE