

**STANDARD DEPARTURE CHART**  
**RNAV (GNSS) -**  
**INSTRUMENT (SID)**

**SINGAPORE/Singapore Changi**  
**RWY 20R**  
**DODSO DEPARTURES**  
**DODSO 1F**

D-ATIS AP ID-WSSS  
128.6

TRANSITION ALTITUDE  
11 000ft

TWR 118.6 / 118.25  
APP 120.3  
ACC 133.8

**GENERAL INFORMATION**

**INITIAL CLIMB**  
3000FT

**CAUTION: RWY 02R/20L CLOSED UNTIL FURTHER ADVISED**

**NOTE: RADAR REQUIRED**

**NOTE: RNAV-1 NAVIGATION SPECIFICATION GNSS REQUIRED**

**NOTE: ACFT UNABLE TO FLY THE SID PROFILE SHALL INFORM ATC PRIOR TO DEPARTURE AND EXPECT RADAR VECTORED IF NECESSARY**

**NOTE: WHEN TAKEN OFF THE SID, AS INSTRUCTED BY ATC, REFER TO ENR 1.5, SECTION 3, PARAGRAPH 3.4.2 - FOR RWY 20R MINIMUM CLIMB GRADIENT**

**NOTE: REFER TO BACK PAGE FOR**  
 - FORMAL AND TABULAR DESCRIPTIONS  
 - RADIO COM FAILURE PROCEDURES

**TEKONG**  
 DVOR/DME 116.5  
 VTK  
 01° 24' 55"N  
 104° 01' 20" E  
 60m

**DER (RWY 20R)**  
 01° 20' 47.00"N  
 103° 58' 35.00"E

**LEDOX**  
 01° 16' 42"N  
 103° 56' 51"E  
 A015

**LEITGO**  
 01° 14' 11"N  
 103° 55' 48"E  
 A025

**DUBOT**  
 01° 08' 46"N  
 104° 01' 03"E  
 A040

**ERVIV**  
 01° 04' 45"N  
 104° 10' 13"E  
 A060

**PROCEDURE INFORMATION**

SID SHALL NOT EXCEED IAS 230KTS UNTIL PASSING AA001 AND NOT EXCEED IAS 250KTS UNTIL PASSING 10000FT AMSL.

CRUISING LEVELS WILL BE ISSUED AFTER TAKE-OFF BY SINGAPORE RADAR.

SID SHALL BE ON A MINIMUM CLIMB GRADIENT OF 4% UNTIL REACHING OR PASSING 2500FT, THEREAFTER 3.3%.

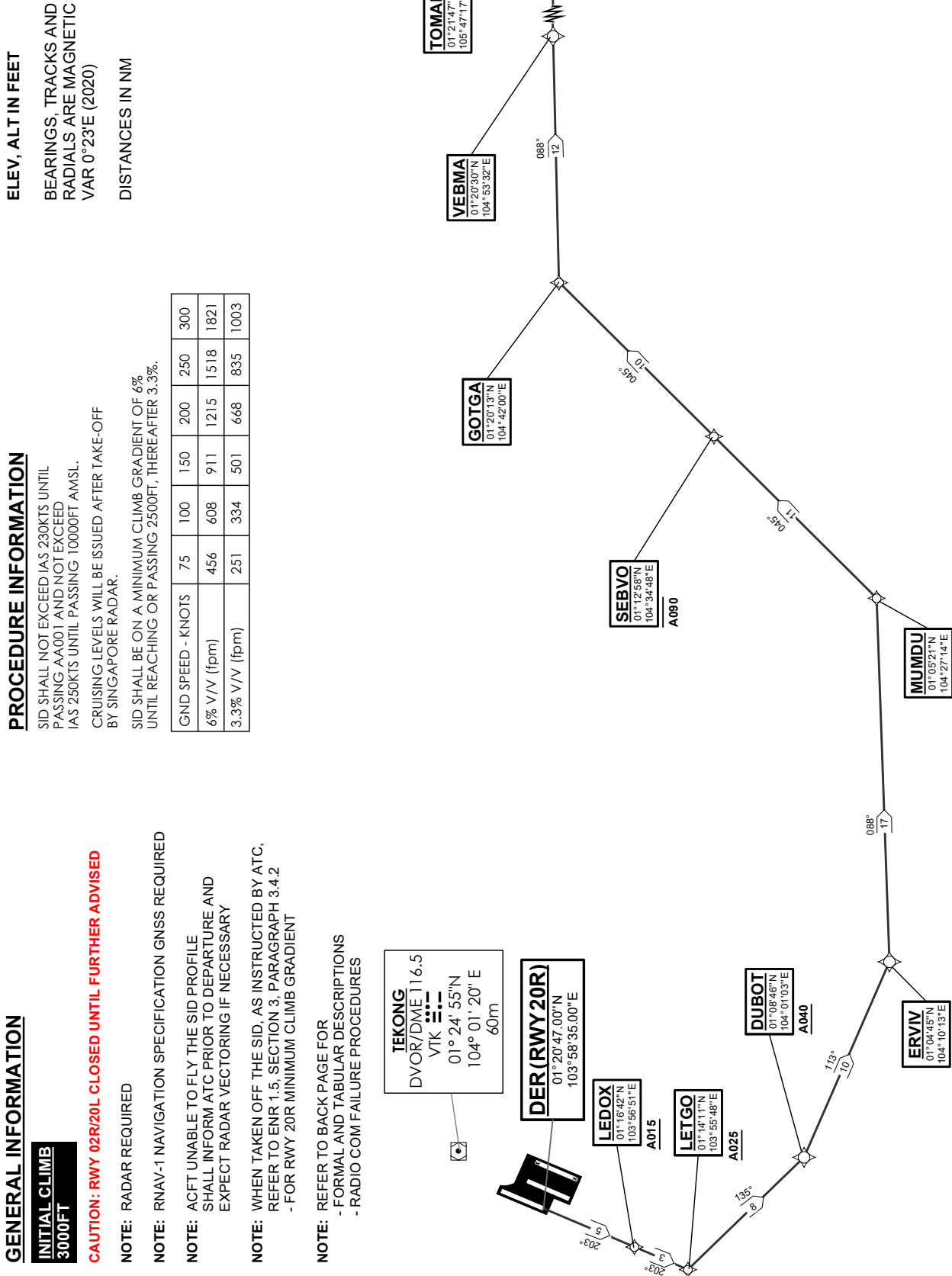
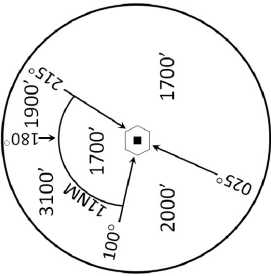
GND SPEED - KNOTS	75	100	150	200	250	300
6% V/V (fpm)	456	608	911	1215	1518	1821
3.3% V/V (fpm)	251	334	501	668	835	1003

ELEV, ALT IN FEET

BEARINGS, TRACKS AND RADIALS ARE MAGNETIC VAR 0°23'E (2020)

DISTANCES IN NM

MSA 25 NM  
from TEKONG DVOR



NOT TO SCALE