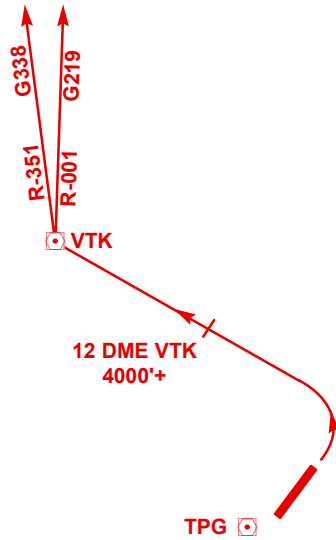


TANJUNG PINANG/RAJA HAJI FISABILILLAH (INDONESIA) - RUNWAY 04 AND 22 STANDARD INSTRUMENT DEPARTURE (SID)

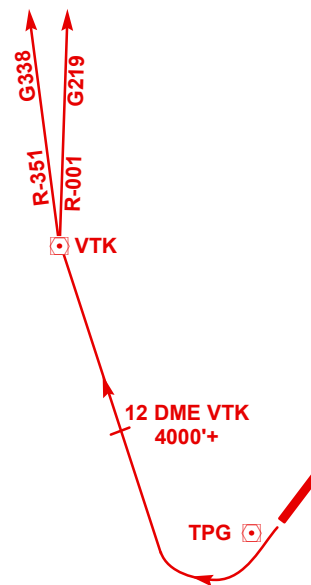
RUNWAY 04



TEKONG 1A DEP (BRAVO 338/GOLF 219 NORTHBOUND)

After departure, turn left for TEKONG DVOR/DME to cross TEKONG 12 DME at or above 4 000ft. Then proceed on Airway B338/G219.

RUNWAY 22



TEKONG 1B DEP (BRAVO 338/GOLF 219 NORTHBOUND)

After departure, turn right for TEKONG DVOR/DME to cross TEKONG 12 DME at or above 4 000ft. Then proceed on Airway B338/G219.