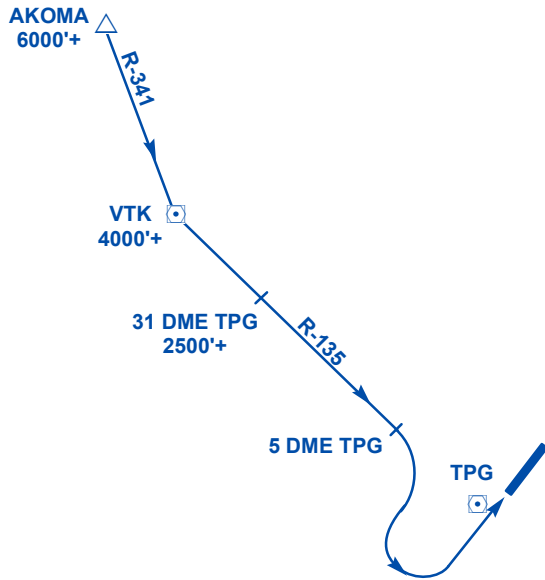


**TANJUNG PINANG/RAJA HAJI FISABILILLAH (INDONESIA) - RUNWAY 04 AND 22
STANDARD INSTRUMENT ARRIVAL (STAR)**

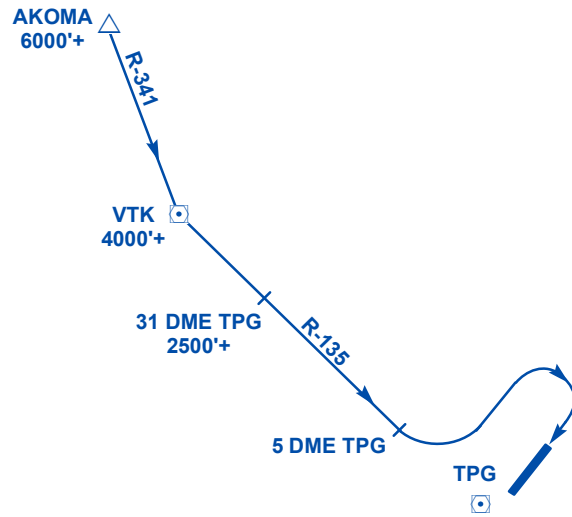
RUNWAY 04



TEKONG 1A ARR (BRAVO 469)

Cross AKOMA (TEKONG R-341/21 DME) at or above 6 000ft and proceed on TEKONG R-341 to cross TEKONG DVOR/DME at or above 4 000ft. At TEKONG DVOR/DME, turn left to intercept TPG R-135. Cross TANJUNG PINANG 31 DME at or above 2 500ft. At TANJUNG PINANG 5 DME, turn right to join downwind Runway 04 and commence approach.

RUNWAY 22



TEKONG 1B ARR (BRAVO 469)

Cross AKOMA (TEKONG R-341/21 DME) at or above 6 000ft and proceed on TEKONG R-341 to cross TEKONG DVOR/DME at or above 4 000ft. At TEKONG DVOR/DME, turn left to intercept TPG R-135. Cross TANJUNG PINANG 31 DME at or above 2 500ft. At TANJUNG PINANG 5 DME, turn left to join downwind Runway 22 and commence approach.