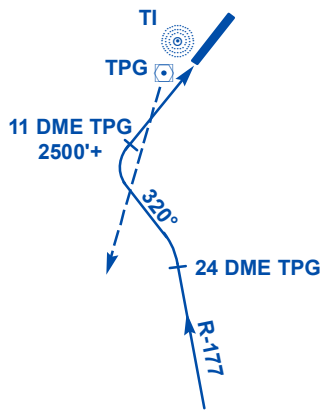


**TANJUNG PINANG/RAJA HAJI FISABILILLAH (INDONESIA) - RUNWAY 04 AND 22  
STANDARD INSTRUMENT ARRIVAL (STAR)**

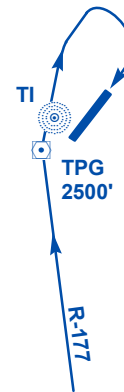
**RUNWAY 04**



**SINGKEP 1A ARR  
(BRAVO 469/WHISKEY 24 EASTBOUND)  
(FROM PALEMBANG/SINGKEP)**

Proceed on TPG R-177 to cross Tanjung Pinang control zone boundary (26 DME TPG) at or below 5 500ft. Then descend to 2 500ft. At TANJUNG PINANG 24 DME, turn left and track 320°. On passing TPG R-205, turn right and commence approach to cross TANJUNG PINANG 11 DME at or above 2 500ft.

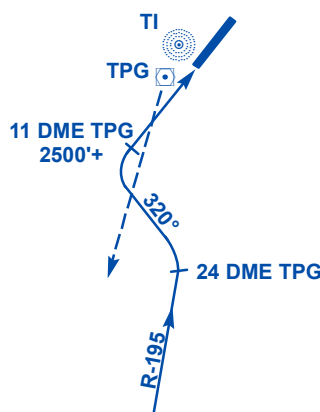
**RUNWAY 22**



**SINGKEP 1B ARR  
(BRAVO 469/WHISKEY 24 EASTBOUND)  
(FROM PALEMBANG/SINGKEP)**

Proceed on TPG R-177 to cross Tanjung Pinang control zone boundary (26 DME TPG) at or below 5 500ft and TPG VOR/DME at 2 500ft. On passing TPG VOR/DME, turn right for downwind Runway 22 and commence approach.

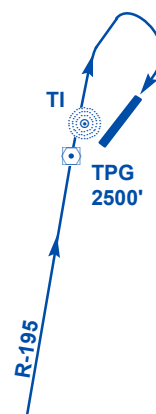
**RUNWAY 04**



**PARDI 1A ARR (GOLF 579 EASTBOUND)  
(FROM JAKARTA)**

Proceed on TPG R-195 to cross Tanjung Pinang control zone boundary (21 DME TPG) at or below 5 500ft. Then descend to 2 500ft. At TANJUNG PINANG 18 DME, turn left and track 320°. On passing TPG R-205, turn right and commence approach to cross TANJUNG PINANG 11 DME at or above 2 500ft.

**RUNWAY 22**



**PARDI 1A ARR (GOLF 579 EASTBOUND)  
(FROM JAKARTA)**

Proceed on TPG R-195 to cross Tanjung Pinang control zone boundary (21 DME TPG) at or below 5 500ft and TPG VOR/DME at 2 500ft. On passing TPG VOR/DME, join downwind Runway 22 and commence approach.