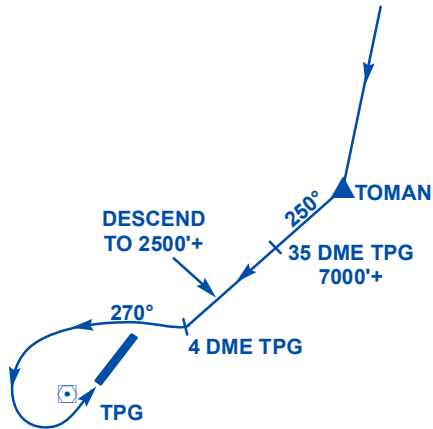


**TANJUNG PINANG/RAJA HAJI FISABILILLAH (INDONESIA) - RUNWAY 04 AND 22
STANDARD INSTRUMENT ARRIVAL (STAR)**

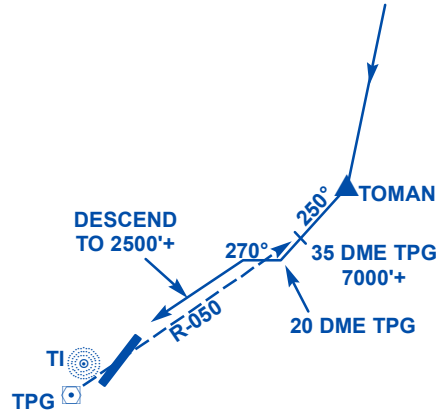
RUNWAY 04



**TOMAN 1A ARR (GOLF 580 WESTBOUND)
(FROM MATAK/RANAI)**

Proceed from TOMAN to TPG VOR/DME on track 250° to cross TANJUNG PINANG 35 DME at or above 7 000ft. Thereafter descend to 2 500ft. At TANJUNG PINANG 4 DME, turn right and track 270° to join downwind Runway 04 and commence approach.

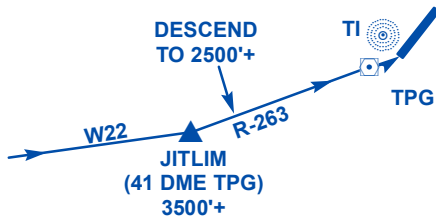
RUNWAY 22



**TOMAN 1B ARR (GOLF 580 WESTBOUND)
(FROM MATAK/RANAI)**

Proceed from TOMAN to TPG VOR/DME on track 250° to cross TANJUNG PINANG 35 DME at or above 7 000ft. At TANJUNG PINANG 20 DME, turn right and track 270° descending to 2 500ft. On passing TPG R-050, turn left and commence approach.

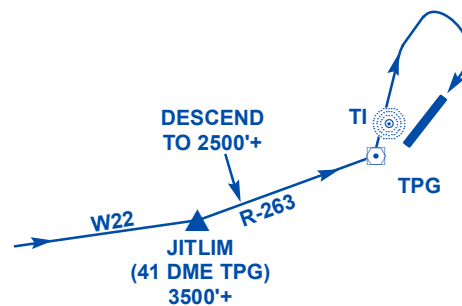
RUNWAY 04



**JITLIM 1A ARR (WHISKEY 22 EASTBOUND)
(FROM PEKANBARU)**

Cross JITLIM (TPG R-263/41 DME) at or above 3 500ft. Then proceed on TPG R-263 to TPG VOR/DME descending to 2 500ft and commence approach.

RUNWAY 22



**JITLIM 1B ARR (WHISKEY 22 EASTBOUND)
(FROM PEKANBARU)**

Cross JITLIM (TPG R-263/41 DME) at or above 3 500ft. Then proceed on TPG R-263 to TPG VOR/DME descending to 2 500ft. Cross TPG VOR/DME at 2 500ft. At TPG VOR/DME, turn left to join downwind Runway 22 and commence approach.