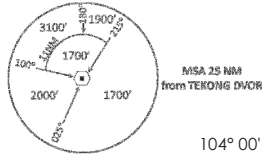
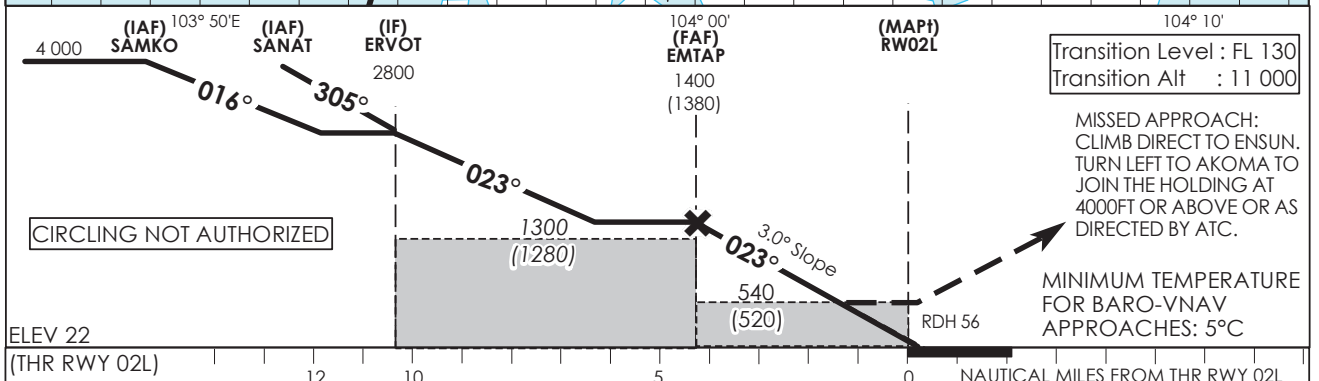
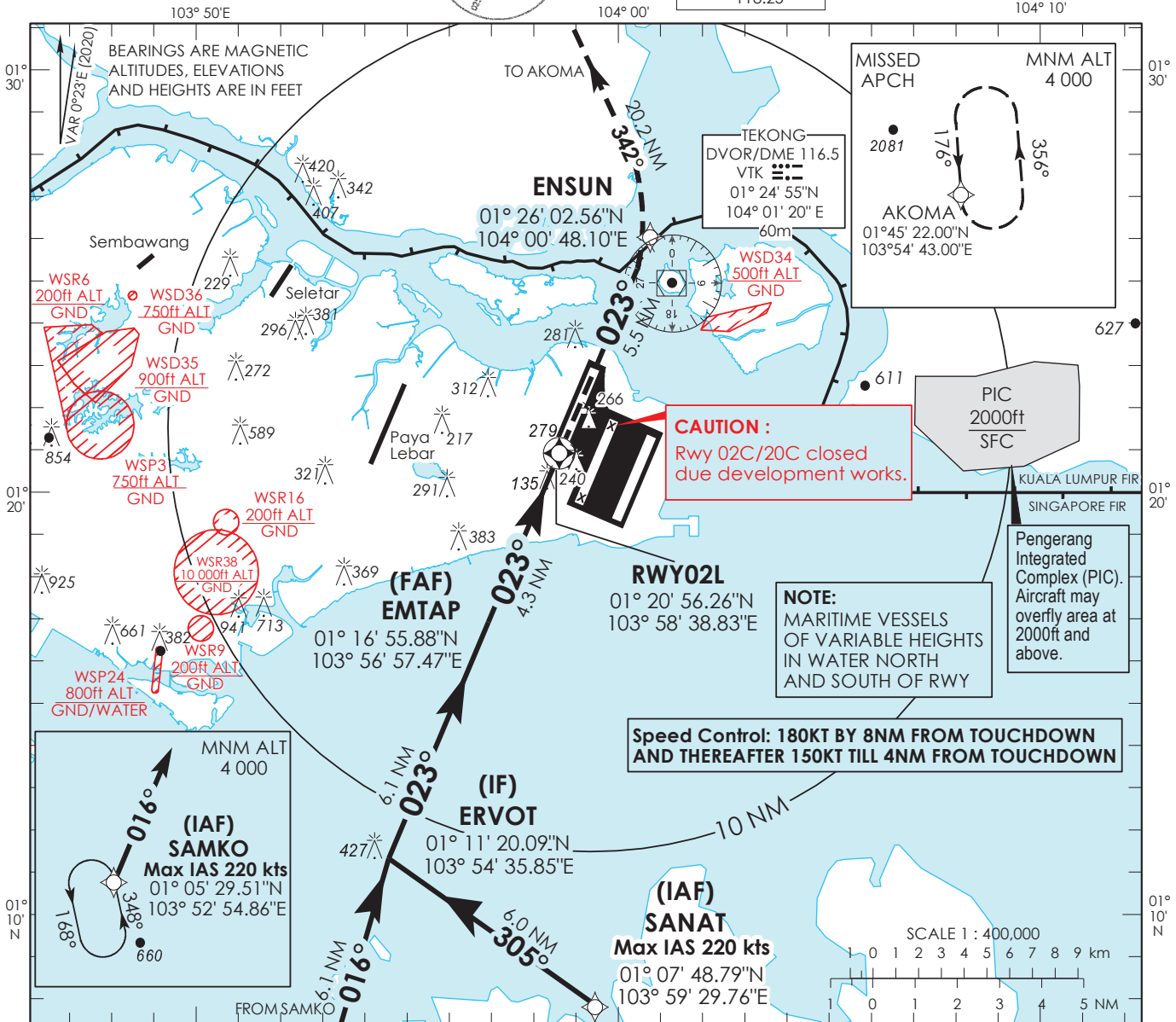


INSTRUMENT APPROACH CHART - ICAO
AERODROME ELEV 22ft
HEIGHT RELATED TO THR RWY 02L - ELEV 22ft



D-ATIS AP ID WSSS
128.025
APP 124.05
119.3
TWR 118.6
118.25

SINGAPORE/SINGAPORE CHANGI
RNP RWY 02L



		OCA (OCH)						
Category of Aircraft		A	B	C	D			
LNAV/VNAV	2.5%	450 (430)						
LNAV	2.5%	540 (520)						
Fix		SAMKO	SANAT	ERVOT	EMTAP	RWY02L	ENSUN	AKOMA
Altitude (Height)		4000 (3978)	4000 (3978)	2800 (2778)	1400 (1378)	540 (518)	880 (858)	4000 (3978)
Speed	knots	80	100	120	140	140	160	180
FAF - MAPt 4.3nm	min : s	3 : 14	2 : 35	2 : 09	1 : 51	1 : 37	1 : 26	
Rate of descent/GS	ft/min	424	530	637	743	849	955	

SINGAPORE CHANGI RNP-APCH RWY 02L – Approach from SAMKO

Path Terminator	Waypoint	Fly-Over	Course °M (°T)	Magnetic Variation	Distance (NM)	Turn Direction	Altitude (FT)	Speed Limit (KT)	VPA/ TCH(FT)	Navigation Specification
IF	SAMKO	-	-	-0.4	-	-	A040+	220	-	RNP APCH
TF	ERVOT	-	016 (016.4)	-0.4	6.1	R	A028+	-	-	RNP APCH
TF	EMTAP	-	023 (023.4)	-0.4	6.1	-	A014+	-	-	RNP APCH
TF	RW02L	Y	023 (023.4)	-0.4	4.3	-	-	-	-3.0° / 50	RNP APCH
DF	ENSUN	-	-	-0.4	-	L	-	-	-	RNP APCH
TF	AKOMA	-	342 (342.4)	-0.4	20.2	-	A040+	-	-	RNP APCH

SINGAPORE CHANGI RNP-APCH RWY 02L – Approach from SANAT

Path Terminator	Waypoint	Fly-Over	Course °M (°T)	Magnetic Variation	Distance (NM)	Turn Direction	Altitude (FT)	Speed Limit (KT)	VPA/ TCH(FT)	Navigation Specification
IF	SANAT	-	-	-0.4	-	-	A040+	220	-	RNP APCH
TF	ERVOT	-	305 (305.4)	-0.4	6.0	R	A028+	-	-	RNP APCH
TF	EMTAP	-	023 (023.4)	-0.4	6.1	-	A014+	-	-	RNP APCH
TF	RW02L	Y	023 (023.4)	-0.4	4.3	-	-	-	-3.0° / 50	RNP APCH
DF	ENSUN	-	-	-0.4	-	L	-	-	-	RNP APCH
TF	AKOMA	-	342 (342.4)	-0.4	20.2	-	A040+	-	-	RNP APCH

Waypoint Coordinates

Name	Latitude	Longitude
SAMKO (IAF)	01° 05' 29.51" N	103° 52' 54.86" E
SANAT (IAF)	01° 07' 48.79" N	103° 59' 29.76" E
ERVOT (IF)	01° 11' 20.09" N	103° 54' 35.85" E
EMTAP (FAF)	01° 16' 55.88" N	103° 56' 57.47" E
RW02L	01° 20' 56.26" N	103° 58' 38.83" E
ENSUN	01° 26' 02.56" N	104° 00' 48.10" E
AKOMA	01° 45' 22.00" N	103° 54' 43.00" E