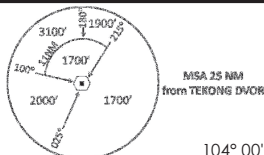
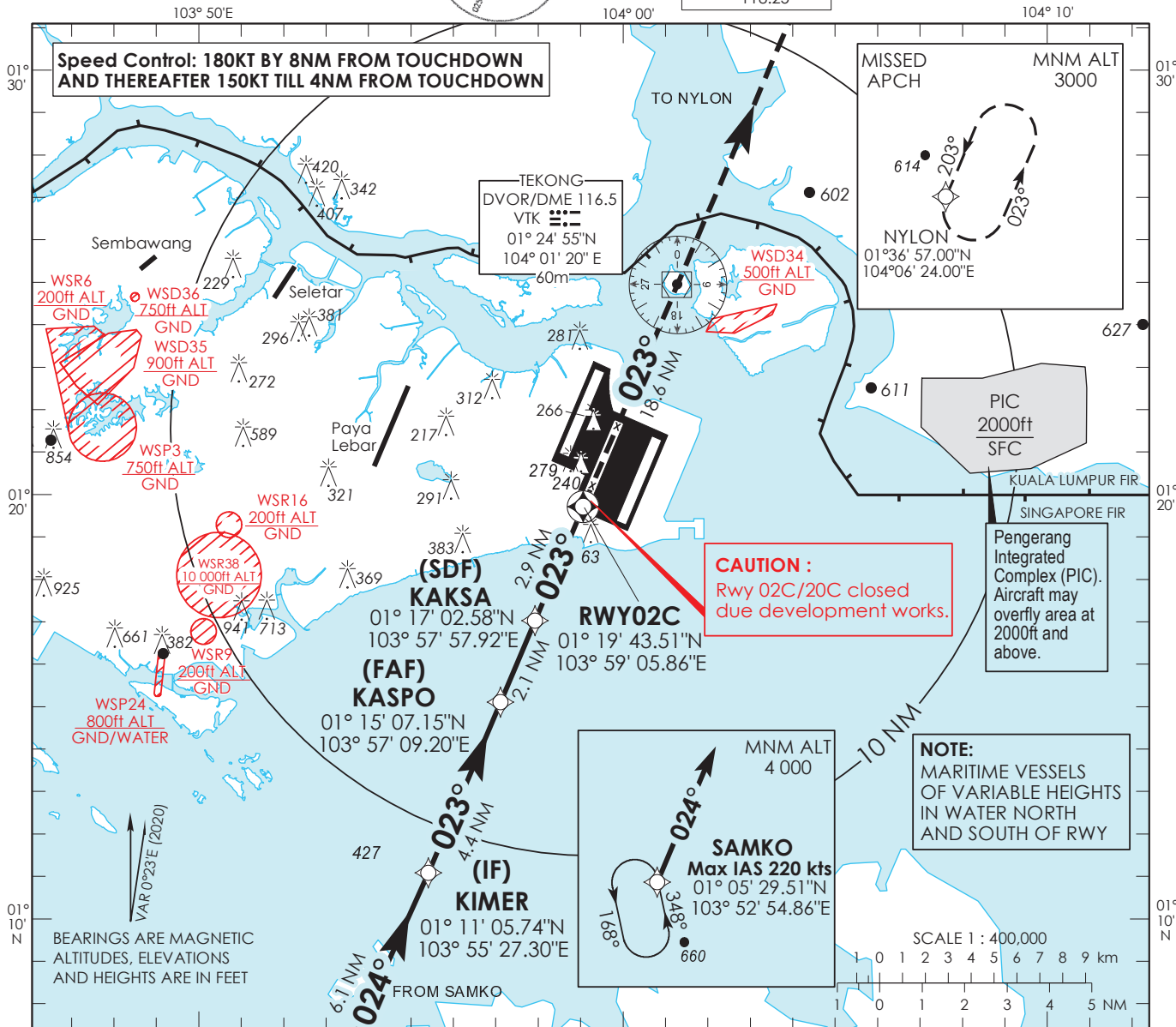


**INSTRUMENT APPROACH CHART - ICAO** AERODROME ELEV 22ft  
HEIGHT RELATED TO THR RWY 02C - ELEV 14ft

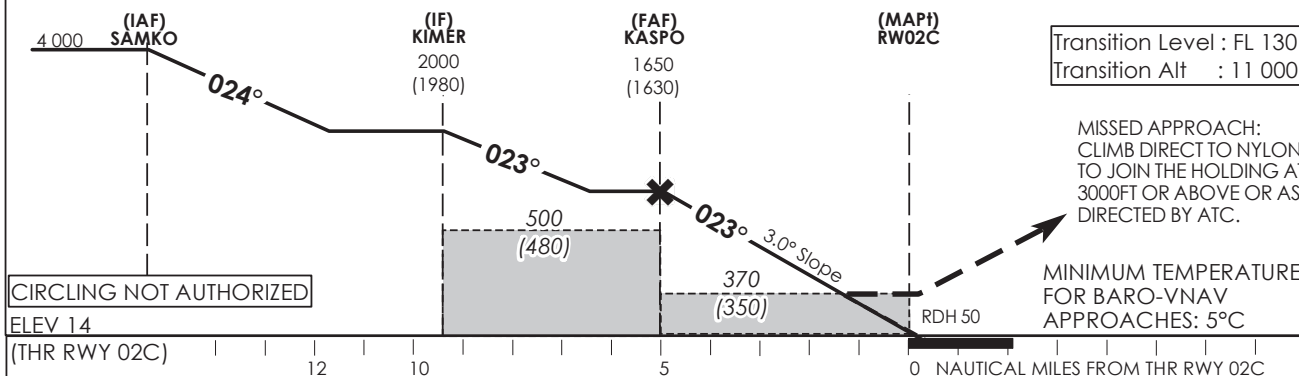


D-ATIS AP ID WSSS  
128.025  
APP 124.05  
119.3  
TWR 118.6  
118.25

**SINGAPORE/ SINGAPORE CHANGI RNP RWY 02C**



1. For aircraft which can only achieve a 2.5% (152 ft/NM) climb gradient, the OCA (OCH) is 370ft (350ft).



		OCA (OCH)			
Category of Aircraft		A	B	C	D
LNAV / VNAV	2.7%	290 (270)			
LNAV	2.7%	370 (350)			

	Fix	SAMKO	KIMER	KASPO	RW02C	NYLON
Altitude (Height)		4000 (3980)	2000 (1980)	1650 (1630)	370 (350)	3000 (2980)
Speed	knots	80	100	120	140	180
FAF - MAPt 5nm	min : s	4:39	3:44	3:06	2:40	2:04
Rate of descent/GS	ft/min	425	531	637	743	955

**SINGAPORE CHANGI RNP-APCH RWY 02C – Approach from SAMKO**

Path Terminator	Waypoint	Fly-Over	Course °M (°T)	Magnetic Variation	Distance (NM)	Turn Direction	Altitude (FT)	Speed Limit (KT)	VPA/TCH(FT)	Navigation Specification
IF	SAMKO	-	-	-0.4	-	-	A040+	220	-	RNP APCH
TF	KIMER	-	024 (024.4)	-0.4	6.1	-	A020+	-	-	RNP APCH
TF	KASPO	-	023 (023.4)	-0.4	4.4	-	A016+	-	-	RNP APCH
TF	KAKSA	-	023 (023.4)	-0.4	2.1	-	990ft+	-	-	RNP APCH
TF	RW02C	Y	023 (023.4)	-0.4	2.9	-	-	-	-3.0° / 50	RNP APCH
DF	NYLON	-	-	-0.4	-	-	A030+	-	-	RNP APCH

**Waypoint Coordinates**

Name	Latitude	Longitude
SAMKO (IAF)	01° 05' 29.51" N	103° 52' 54.86" E
KIMER (IF)	01° 11' 05.74" N	103° 55' 27.30" E
KASPO (FAF)	01° 15' 07.15" N	103° 57' 09.20" E
KAKSA (SDF)	01° 17' 02.58" N	103° 57' 57.92" E
RW02C	01° 19' 43.51" N	103° 59' 05.86" E
NYLON	01° 36' 57.00" N	104° 06' 24.00" E