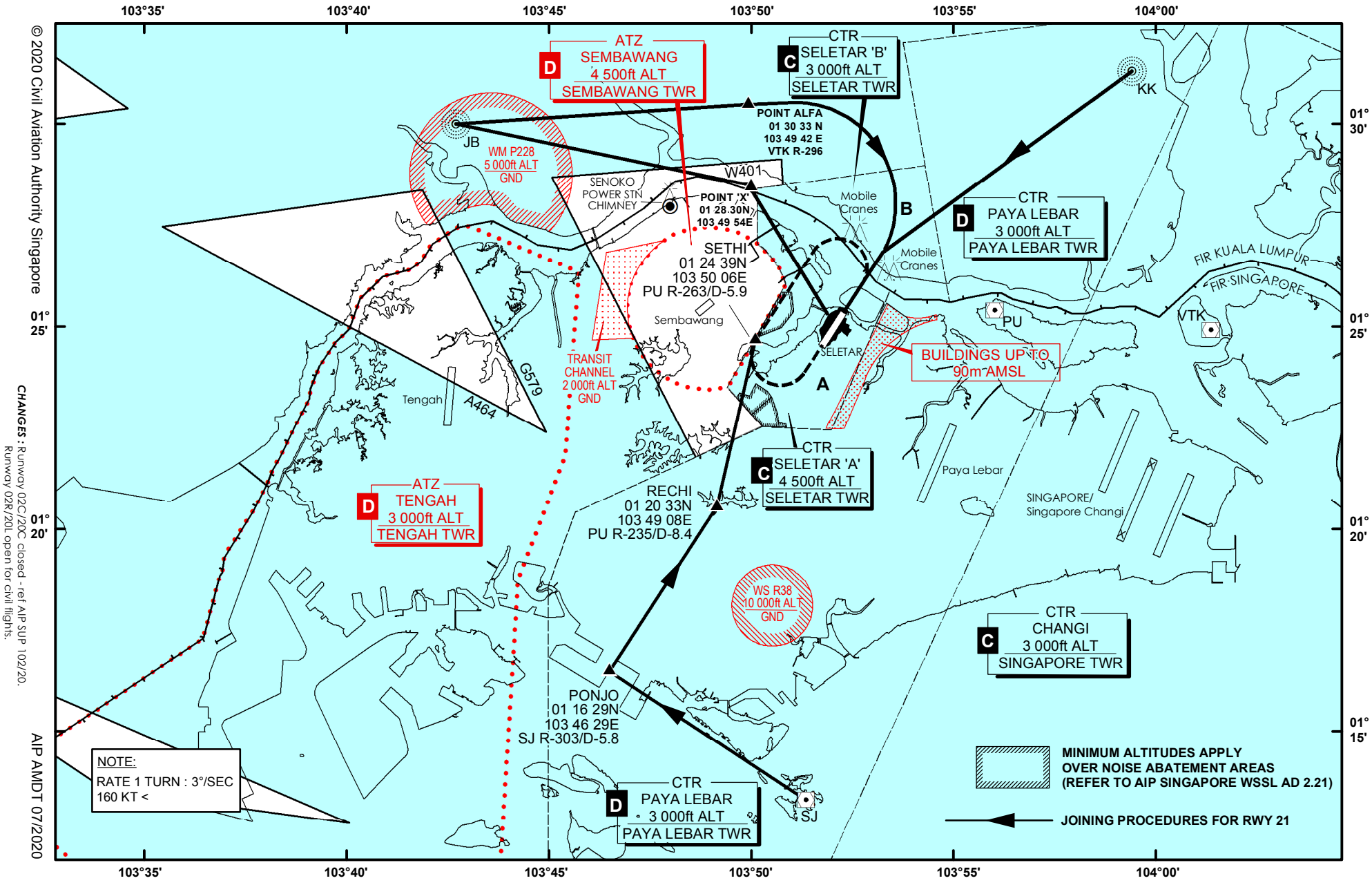


SELETAR AERODROME JOINING PROCEDURE (IFR FLIGHTS) FROM JB, KK AND SJ - RUNWAY 21



NOTE:
 RATE 1 TURN : 3°/SEC
 160 KT <

© 2020 Civil Aviation Authority Singapore
 01° 25'
 CHANGES : - Runway 02R/20C closed - ref AIP SUP 10/2020
 Runway 02R/20L open for civil flights.
 AIP AMDT 07/2020

AIP Singapore
 AD-2-WSSL-IFR-2
 31 DEC 2020