

**STANDARD ARRIVAL CHART  
RNAV (GNSS) -  
INSTRUMENT (STAR)**

ACC 133.25 / 134.4  
APP 124.05  
119.3  
TWR 118.6

TRANSITION ALTITUDE  
11 000ft

D-ATIS AP ID-WSSS  
128.025

**SINGAPORE/Singapore Changi  
RWY 20R/C/L  
LEBAR TWO BRAVO ARRIVAL  
LEBAR 2B**

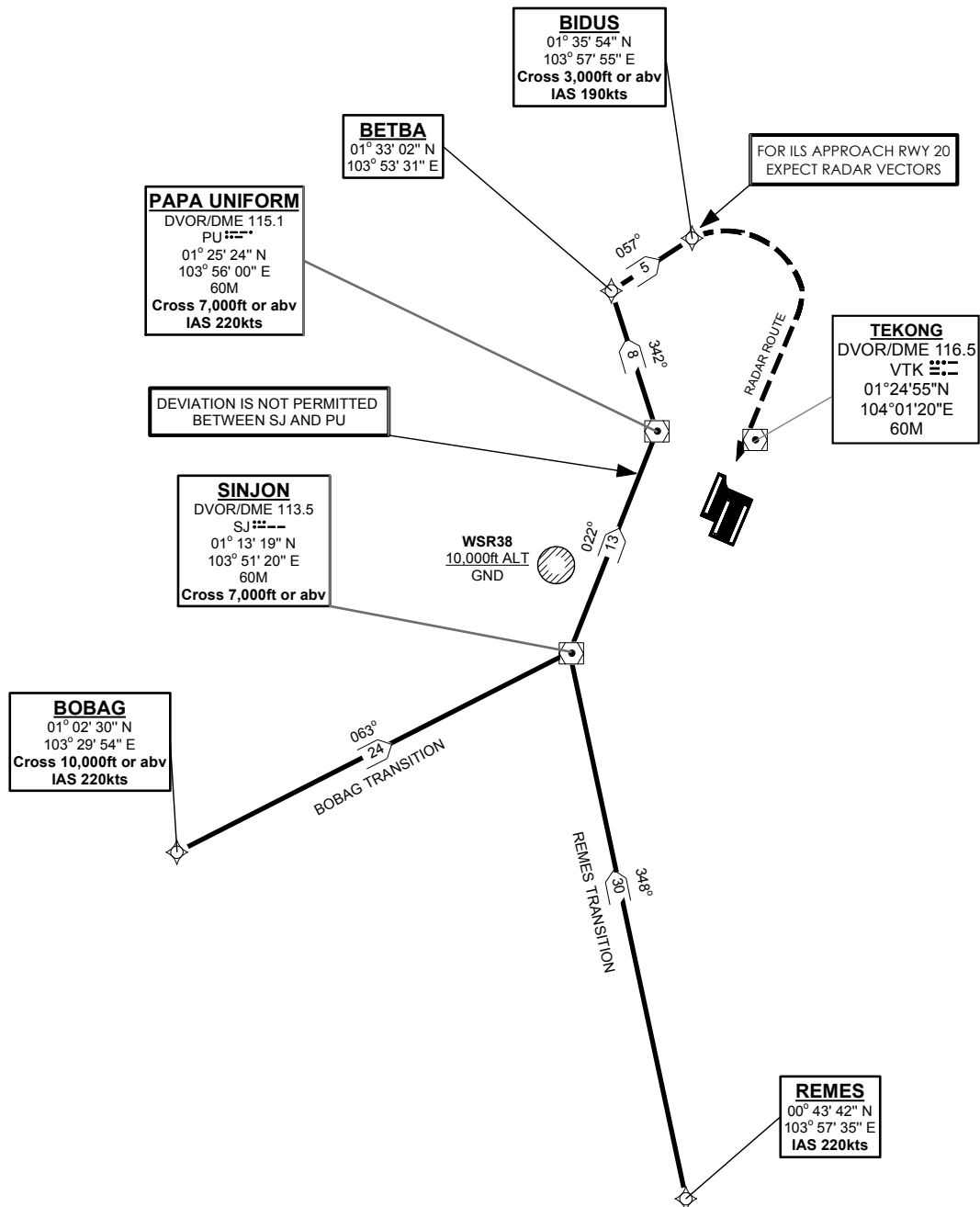
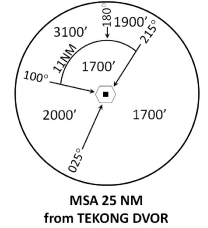
ELEV, ALT IN FEET  
BEARINGS, TRACKS AND  
RADIALS ARE MAGNETIC  
VAR 0°23'E (2020)

DISTANCES IN NM

**NOTE:** RADAR REQUIRED

**NOTE:** RNAV-1 NAVIGATION SPECIFICATION GNSS REQUIRED

**NOTE:** REFER TO BACK PAGE FOR  
- FORMAL AND TABULAR DESCRIPTIONS  
- RADIO COM FAILURE PROCEDURES



NOT TO SCALE

## LEBAR 2B (STAR) RNAV GNSS RWY 20R/20C/20L - DESCRIPTIONS

### Formal & Abbreviated Descriptions

Formal Description (BOBAG Transition)	Abbreviated Description	Path Terminator	Fly-Over required
From BOBAG at or above 10000ft, speed 220kts. To SJ at or above 7000ft, turn left. To PU at or above 7000ft, speed 220kts, turn left. To BETBA, turn right. To BIDUS at or above 3000ft, speed 190kts.	BOBAG [A100+; K220] -	IF	N
	SJ [A070+; L] -	TF	N
	PU [A070+; K220; L] -	TF	N
	BETBA [R] -	TF	N
	BIDUS [A030+; K190]	TF	N
Formal Description (REMES Transition)	Abbreviated Description	Path Terminator	Fly-Over required
From REMES, speed 220kts. To SJ at or above 7000ft, turn right. To PU at or above 7000ft, speed 220kts, turn left. To BETBA, turn right. To BIDUS at or above 3000ft, speed 190kts.	REMES [K220] -	IF	N
	SJ [A070+; R] -	TF	N
	PU [A070+; K220; L] -	TF	N
	BETBA [R] -	TF	N
	BIDUS [A030+; K190]	TF	N

### Tabular Descriptions (BOBAG Transition)

Path Term	Waypoint Name	Fly-Over	Course °M(°T)	Magnetic Variation	Turn Direction	Altitude	Speed Limit	Navigation Spec
IF	BOBAG	-	-	-	-	A100+	K220	RNAV1
TF	SJ	-	063(063.4)	-0.4	L	A070+	-	RNAV1
TF	PU	-	022(022.4)	-0.4	L	A070+	K220	RNAV1
TF	BETBA	-	342(342.4)	-0.4	R	-	-	RNAV1
TF	BIDUS	-	057(057.4)	-0.4	-	A030+	K190	RNAV1

### Tabular Descriptions (REMES Transition)

Path Term	Waypoint Name	Fly-Over	Course °M(°T)	Magnetic Variation	Turn Direction	Altitude	Speed Limit	Navigation Spec
IF	REMES	-	-	-	-	-	K220	RNAV1
TF	SJ	-	348(348.4)	-0.4	R	A070+	-	RNAV1
TF	PU	-	022(022.4)	-0.4	L	A070+	K220	RNAV1
TF	BETBA	-	342(342.4)	-0.4	R	-	-	RNAV1
TF	BIDUS	-	057(057.4)	-0.4	-	A030+	K190	RNAV1

## RADIO COMMUNICATIONS FAILURE PROCEDURE

1	<b>SET TRANSPONDER TO MODE A/C CODE 7600</b>
2	<p><b>When cleared via LEBAR 2B by Singapore ATC</b></p> <p>(a) Maintain last assigned flight level or altitude and proceed on LEBAR 2B to BIDUS, then direct to NYLON</p> <p>(b) From NYLON commence descent and carry out appropriate landing procedure for RWY 20R as close as possible to EAT or ETA</p> <p>(c) If unable to effect a landing, refer to Singapore AIP for missed approach procedure</p>
3	<p><b>No clearance or instruction received from Singapore ATC</b></p> <p>- Refer to Singapore AIP for radio communications failure procedure</p>