

INSTRUMENT  
APPROACH  
CHART - ICAO

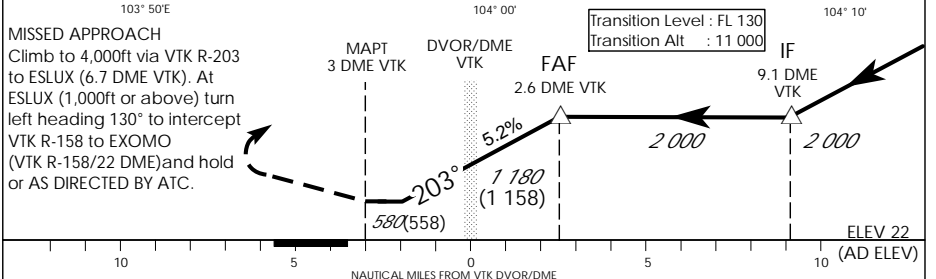
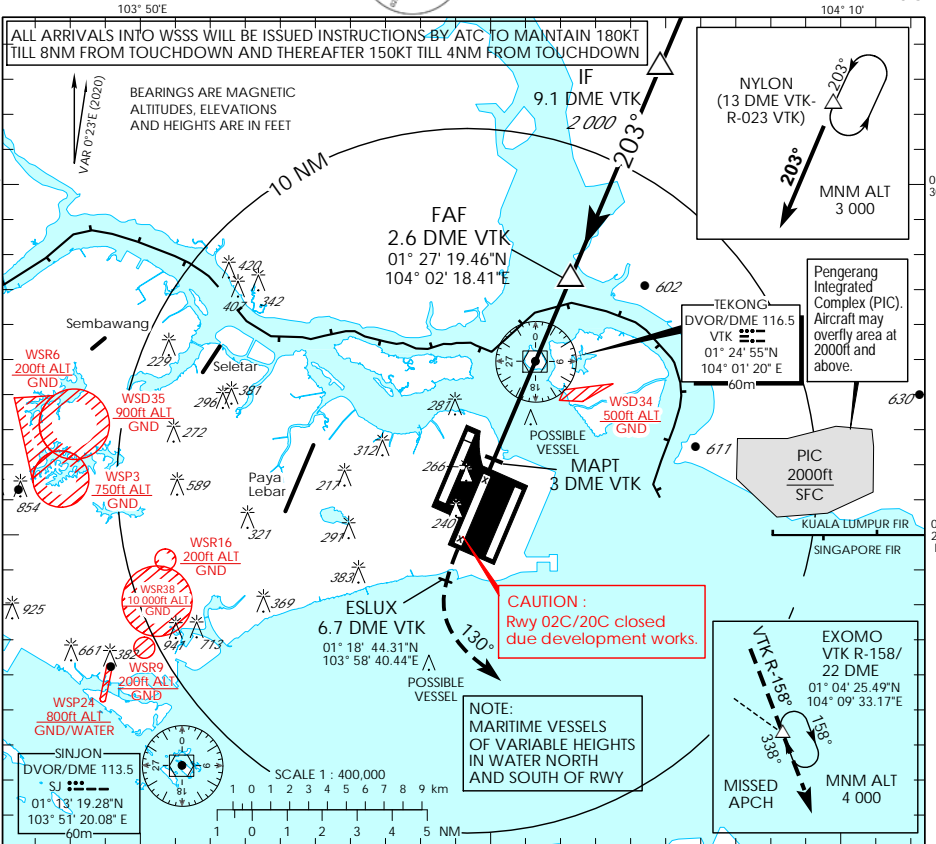
AERODROME ELEV 22ft  
HEIGHT RELATED TO  
AD ELEV



MSA 25 NM  
from TEKONG DVOR/DME

|                   |         |
|-------------------|---------|
| D-ATIS AP ID WSSS | 128.025 |
| APP               | 124.05  |
| TWR               | 119.3   |
|                   | 118.6   |
|                   | 118.25  |

SINGAPORE/  
SINGAPORE CHANGI  
VTK DVOR/DME  
RWY 20C



| OCA (OCH)            |             |             |             |           |
|----------------------|-------------|-------------|-------------|-----------|
| Category of Aircraft | A           | B           | C           | D         |
| Straight-in          |             |             | 580 (558)   |           |
| Distance             | 2 DME       | 1 DME       | VTK         | 1 DME     |
| Altitude (Height)    | 1820 (1798) | 1500 (1478) | 1180 (1158) | 860 (838) |
| Speed                | knots       | 70          | 120         | 150       |
| FAF - MAPT 5.6nm     | min : s     | 4 : 48      | 2 : 48      | 2 : 15    |
| Rate of descent/GS   | ft/min      | 370         | 635         | 795       |
|                      |             |             |             | 980       |