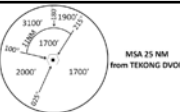
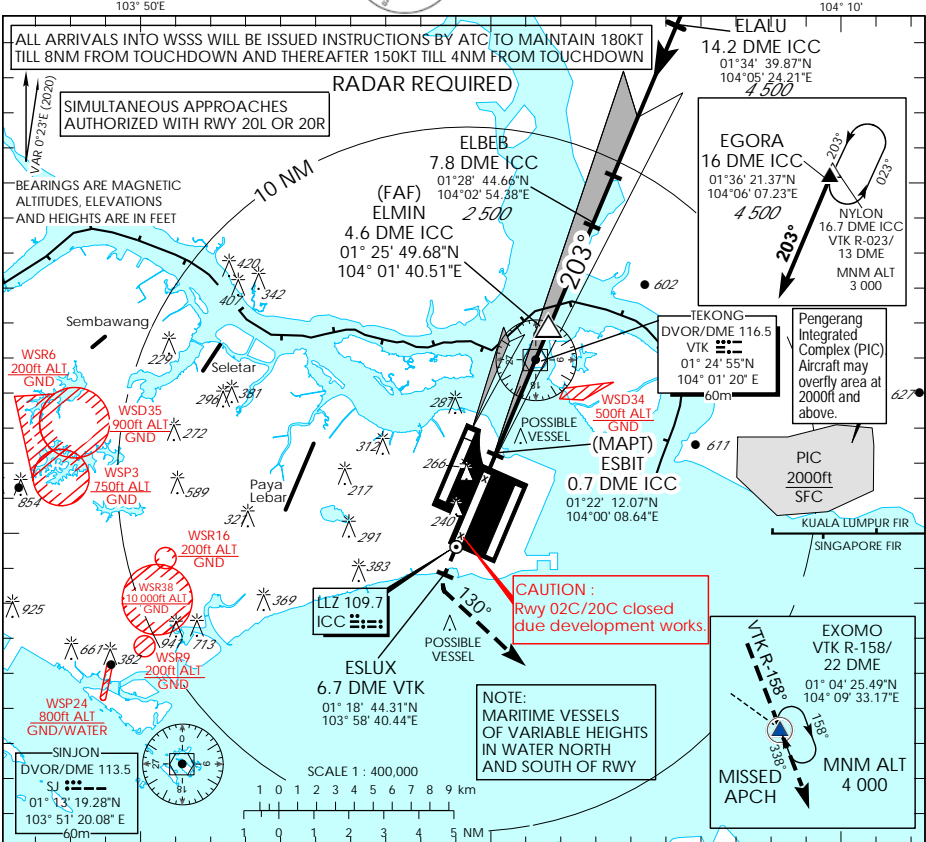


INSTRUMENT APPROACH CHART - ICAO
AERODROME ELEV 22ft
 HEIGHT RELATED TO
THR RWY 20C - ELEV 15ft

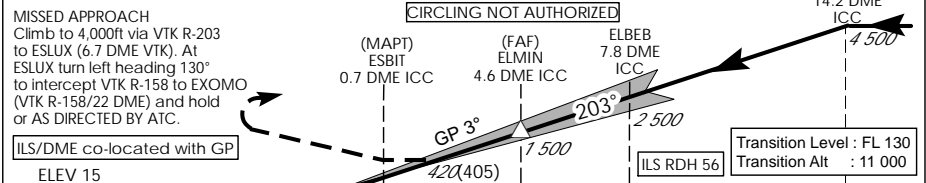


D-ATIS	AP ID WSSS	128.025
APP		124.05
		119.3
TWR		118.6
		118.25

SINGAPORE/ SINGAPORE CHANGI
ICC ILS/DME
RWY 20C



This procedure requires a missed approach climb gradient of 2.8% (171 ft/NM) until passing 2,000ft.
 For aircraft which can only achieve a 2.5% (152 ft/NM) climb gradient, the CAT I OCA(OCH) is 315ft (300ft).



* TIMING NOT AUTHORIZED WHEN GP INOP

NAUTICAL MILES FROM RWY THR 20C

Category of Aircraft	OCA (OCH)					
	A	B	C	D	D ₁	
Straight-in	CAT I ILS	166 (151)	180 (165)	196 (181)	209 (194)	212 (197)
	CAT II ILS	71 (56)	78 (63)	91 (76)	101 (86)	107 (92)
	GP INOP	420 (405)				

Distance	4 DME	3 DME	2 DME
Altitude (Height)	1290 (1275)	980 (965)	660 (645)
Speed	knots 70	120	150 185
FAF - MAPT 3.9nm	min : s "	3 : 21	1 : 57 1 : 34 1 : 16
Rate of descent/GS	ft/min 370	635	795 980