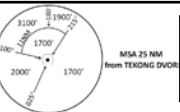


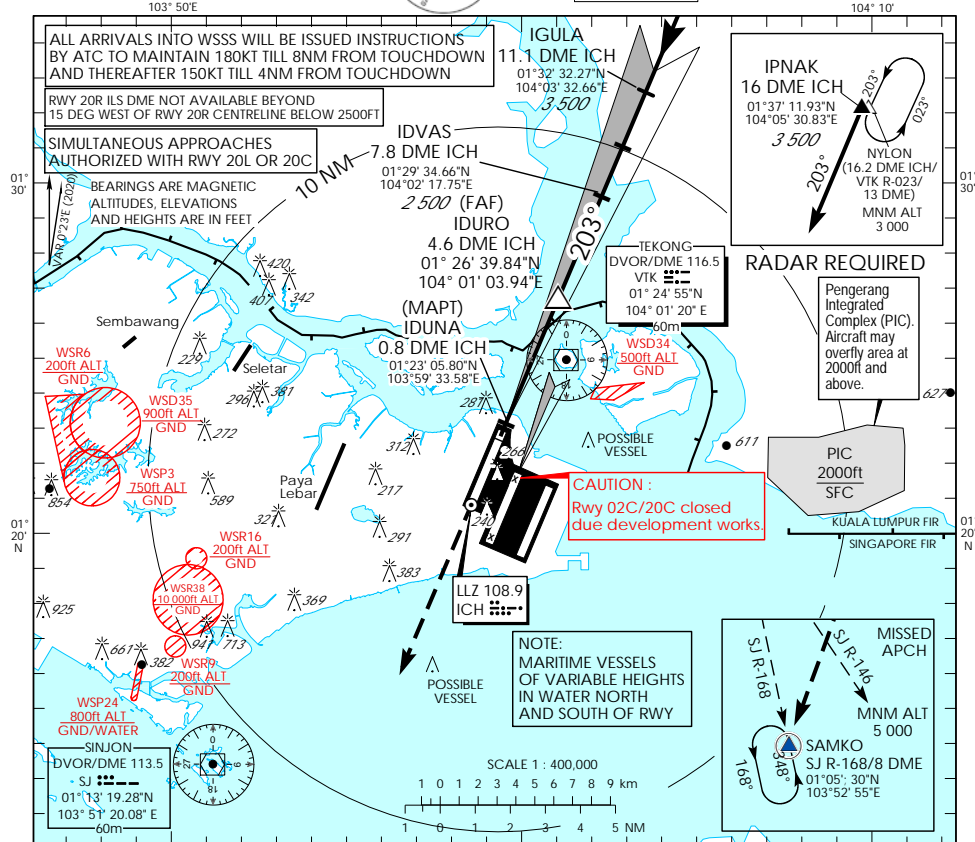
INSTRUMENT  
APPROACH  
CHART - ICAO

AERODROME ELEV 22ft  
HEIGHT RELATED TO  
DTHR RWY 20R - ELEV 13ft

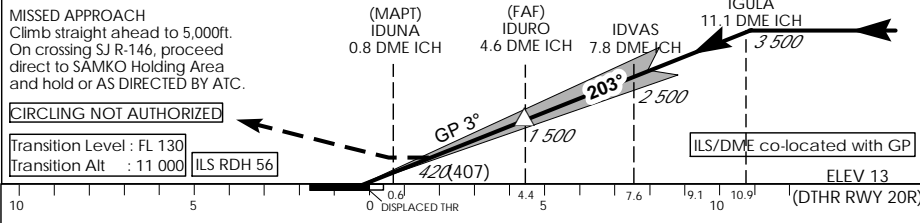


D-ATIS AP ID WSSS	128.025
APP	124.05
TWR	119.3
	118.6
	118.25

SINGAPORE/  
SINGAPORE CHANGI  
ICH ILS/DME  
RWY 20R



This procedure requires a missed approach climb gradient of 3.7% (225 ft/NM) until passing 2,500ft. For aircraft which can only achieve a 2.5% (152 ft/NM) climb gradient, the CAT I OCA (OCH) is 693ft (680ft).



\* TIMING NOT AUTHORIZED WHEN GP INOP

Category of Aircraft	OCA (OCH)				
	A	B	C	D	D <sub>L</sub>
Straight-in	152 (139)	159 (146)	179 (166)	192 (179)	195 (182)
	GP INOP		420 (407)		
Distance	4 DME		3 DME		2 DME
Altitude (Height)	1290 (1277)		970 (957)		650 (637)
Speed	knots	70	120	150	185
FAF - MAPT 3.9nm	min : s *	3 : 21	1 : 57	1 : 34	1 : 16
Rate of descent/GS	ft/min	370	635	795	980