

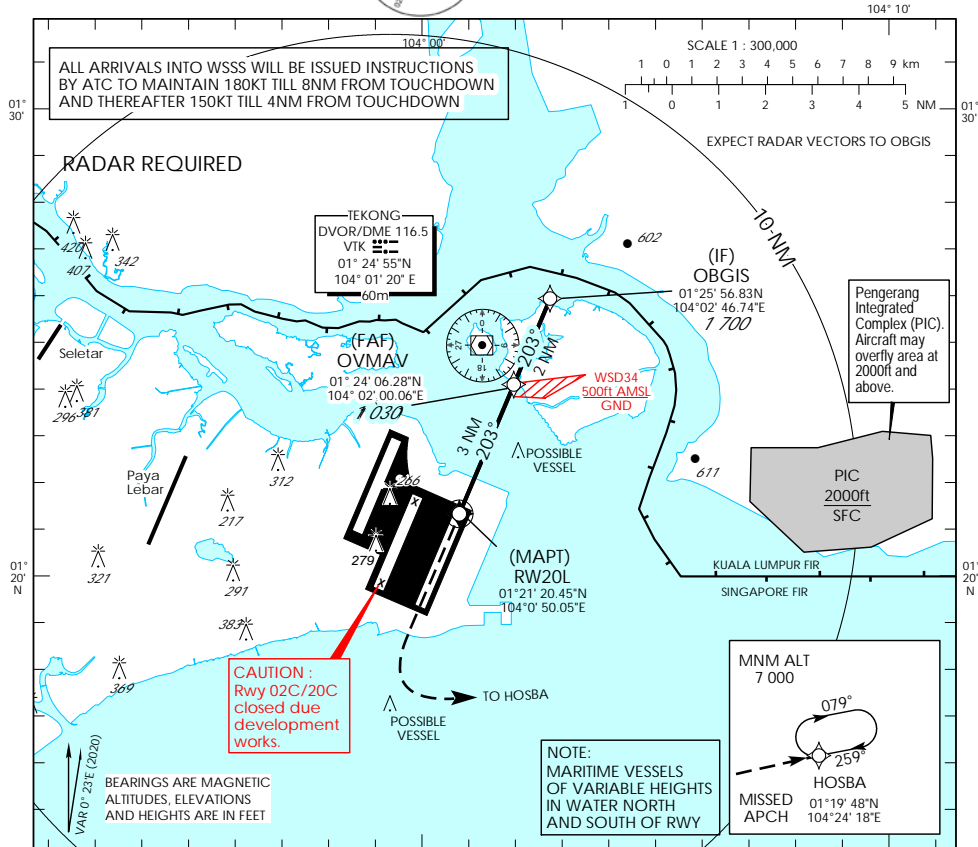
INSTRUMENT AERODROME ELEV 22ft
APPROACH HEIGHT RELATED TO
CHART THR RWY 20L - ELEV 16ft



MSA 25 NM
 from TEKONG DVOR:

D-ATIS AP ID WSSS	128.6
APP	124.05
	124.6
TWR	131.4

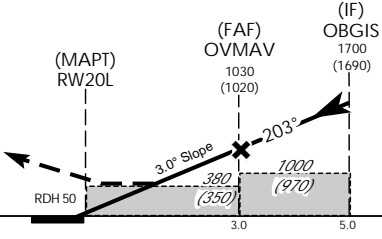
**SINGAPORE/
 SINGAPORE CHANGI**
RNP RWY 20L



This procedure requires a missed approach climb gradient of 5% (304 ft/NM) until passing 3,000ft.
 For aircraft which can only achieve a 2.5% (152 ft/NM) climb gradient, the CAT I OCA (OCH) is 1080ft (1050ft).

Transition Level : FL 130
 Transition Alt : 11 000

MISSED APPROACH
 Climb straight to 1 500ft, turn left climbing to 7 000ft to HOSBA.
 Hold at HOSBA or AS DIRECTED BY ATC.
 No turn before MAPt.



MINIMUM TEMPERATURE FOR BARO-VNAV APPROACHES: 5°C

CIRCLING NOT AUTHORIZED

Category of Aircraft		OCA (OCH)			
		A	B	C	D
LNAV/VNAV	5%		280 (260)		
LNAV	5%		380 (350)		
Distance			OBGIS		OVMNAV
Altitude (Height)			1700 (1690)		1030 (1020)
Speed	knots	70	120	150	185
FAF - MAPt 3.0nm	min : s "	2 : 34	1 : 30	1 : 12	0 : 58
Rate of descent/GS	ft/min	370	635	795	980

SINGAPORE CHANGI RNP-APCH RWY 20L – Approach from OBGIS

Path Terminator	Waypoint	Fly-Over	Course °M (°T)	Magnetic Variation	Distance (NM)	Turn Direction	Altitude (FT)	Speed Limit (KT)	VPA/TCH(FT)	Navigation Specification
IF	OBGIS	-	203 (203.4)	-0.4	-	-	1700+	180	-	RNP APCH
TF	OVMAN	-	203 (203.4)	-0.4	2	-	1030+	150	-	RNP APCH
TF	RW20L	Y	203 (203.4)	-0.4	3	-	-	-	-3.0° / 50	RNP APCH
CA	-	-	203 (203.4)	-0.4	-	L	1500+	-	-	RNP APCH
DF	HOSBA	-	-	-	-	-	7000+	-	-	RNP APCH

Waypoint Coordinates

Name	Latitude	Longitude
OBGIS (IF)	01° 25' 56.83" N	104° 02' 46.74" E
OVMAN (FAF)	01° 24' 06.28" N	104° 02' 00.06" E
RW20L	01° 21' 20.45" N	104° 00' 50.05" E
HOSBA	01° 19' 48.00" N	104° 24' 18.00" E