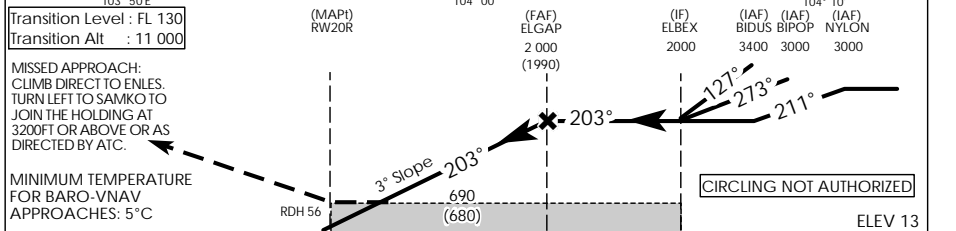
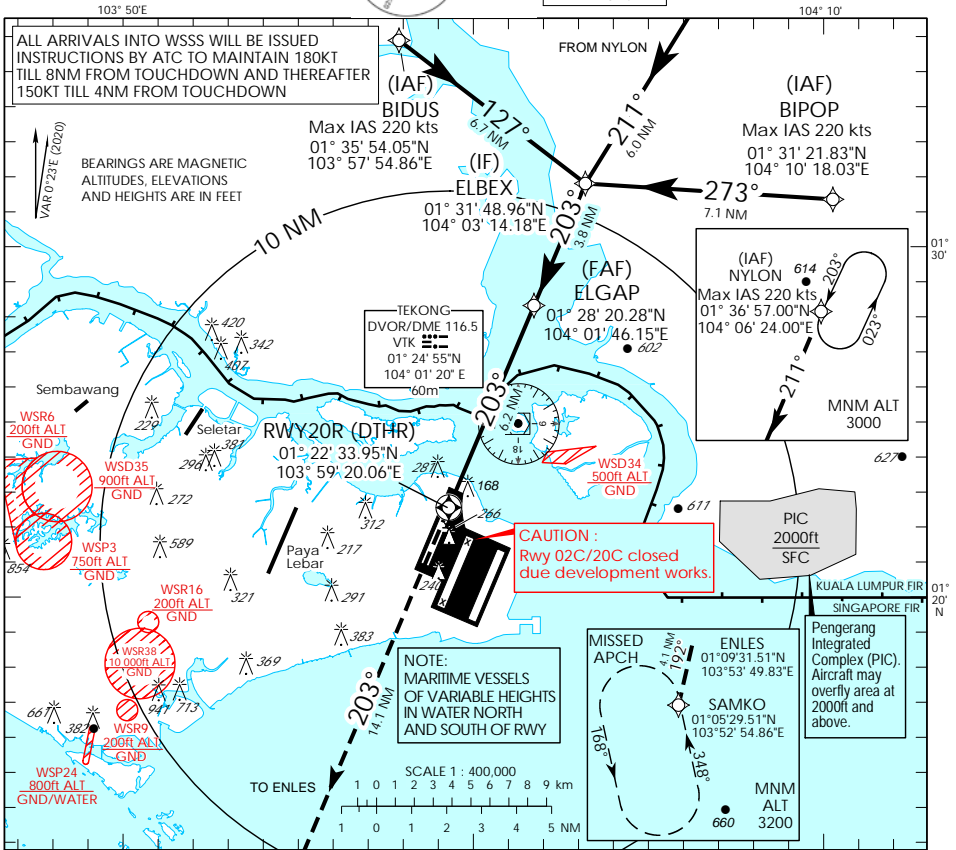


**INSTRUMENT APPROACH CHART - ICAO**  
**AERODROME ELEV 22ft**  
 HEIGHT RELATED TO  
**DTHR RWY 20R - ELEV 13ft**



D-ATIS AP ID	WSSS
APP	128.025
	124.05
	119.3
TWR	118.6
	118.25

**SINGAPORE/ SINGAPORE CHANGI**  
**RNP RWY 20R**



		OCA (OCH)							
Category of Aircraft		A	B	C	D				
LNAV/VNAV	2.5%	690 (680)							
LNAV	2.5%	690 (680)							
Fix		BIDUS	NYLON	BIPOP	ELBEX	ELGAP	RW20R	ENLES	SAMKO
Altitude (Height)		3400 (3387)	3000 (2987)	3000 (2987)	2000 (1987)	2000 (1987)	690 (680)	2180 (2167)	3200 (3187)
Speed	knots	80	100	120	140	160	180		
FAF - MAPT 6.2 nm	min : s	4 : 39	3 : 44	3 : 06	2 : 40	2 : 20	2 : 04		
Rate of descent/GS	ft/min	425	531	637	743	849	955		

**SINGAPORE CHANGI RNP-APCH RWY 20R – Approach from BIDUS**

Path Terminator	Waypoint	Fly-Over	Course °M (°T)	Magnetic Variation	Distance (NM)	Turn Direction	Altitude (FT)	Speed Limit (KT)	VPA/ TCH(FT)	Navigation Specification
IF	BIDUS	-	-	-0.4	-	-	A034+	220	-	RNP APCH
TF	ELBEX	-	127 (127.4)	-0.4	6.7	R	A020+	-	-	RNP APCH
TF	ELGAP	-	203 (203.4)	-0.4	3.8	-	A020+	-	-	RNP APCH
TF	RW20R	Y	203 (203.4)	-0.4	6.2	-	-	-	-3.0° / 50	RNP APCH
DF	ENLES	-	-	-0.4	-	L	-	-	-	RNP APCH
TF	SAMKO	-	192 (192.4)	-0.4	4.1	-	A032+	-	-	RNP APCH

**SINGAPORE CHANGI RNP-APCH RWY 20R – Approach from NYLON**

Path Terminator	Waypoint	Fly-Over	Course °M (°T)	Magnetic Variation	Distance (NM)	Turn Direction	Altitude (FT)	Speed Limit (KT)	VPA/ TCH(FT)	Navigation Specification
IF	NYLON	-	-	-0.4	-	-	A030+	220	-	RNP APCH
TF	ELBEX	-	211 (211.4)	-0.4	6.0	L	A020+	-	-	RNP APCH
TF	ELGAP	-	203 (203.4)	-0.4	3.8	-	A020+	-	-	RNP APCH
TF	RW20R	Y	203 (203.4)	-0.4	6.2	-	-	-	-3.0° / 50	RNP APCH
DF	ENLES	-	-	-0.4	-	L	-	-	-	RNP APCH
TF	SAMKO	-	192 (192.4)	-0.4	4.1	-	A032+	-	-	RNP APCH

**SINGAPORE CHANGI RNP-APCH RWY 20R – Approach from BIPOP**

Path Terminator	Waypoint	Fly-Over	Course °M (°T)	Magnetic Variation	Distance (NM)	Turn Direction	Altitude (FT)	Speed Limit (KT)	VPA/ TCH(FT)	Navigation Specification
IF	BIPOP	-	-	-0.4	-	-	A030+	220	-	RNP APCH
TF	ELBEX	-	273 (273.4)	-0.4	7.1	L	A020+	-	-	RNP APCH
TF	ELGAP	-	203 (203.4)	-0.4	3.8	-	A020+	-	-	RNP APCH
TF	RW20R	Y	203 (203.4)	-0.4	6.2	-	-	-	-3.0° / 50	RNP APCH
DF	ENLES	-	-	-0.4	-	L	-	-	-	RNP APCH
TF	SAMKO	-	192 (192.4)	-0.4	4.1	-	A032+	-	-	RNP APCH

**Waypoint Coordinates**

Name	Latitude	Longitude
BIDUS (IAF)	01° 35' 54.05" N	103° 57' 54.86" E
NYLON (IAF)	01° 36' 57.00" N	104° 06' 24.00" E
BIPOP (IAF)	01° 31' 21.83" N	104° 10' 18.03" E
ELBEX (IF)	01° 31' 48.96" N	104° 03' 14.18" E
ELGAP (FAF)	01° 28' 20.28" N	104° 01' 46.15" E
RW20R	01° 22' 33.95" N	103° 59' 20.06" E
ENLES	01° 09' 31.51" N	103° 53' 49.83" E
SAMKO	01° 05' 29.51" N	103° 52' 54.86" E