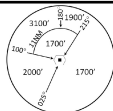
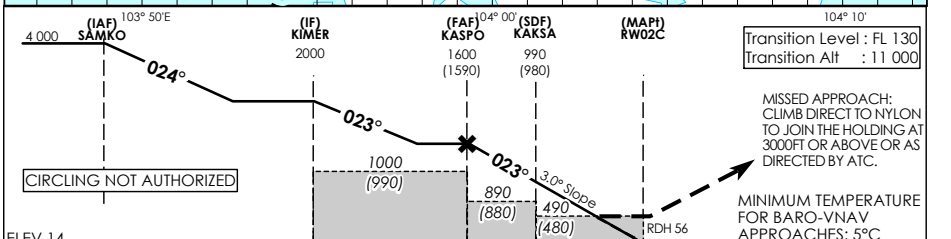
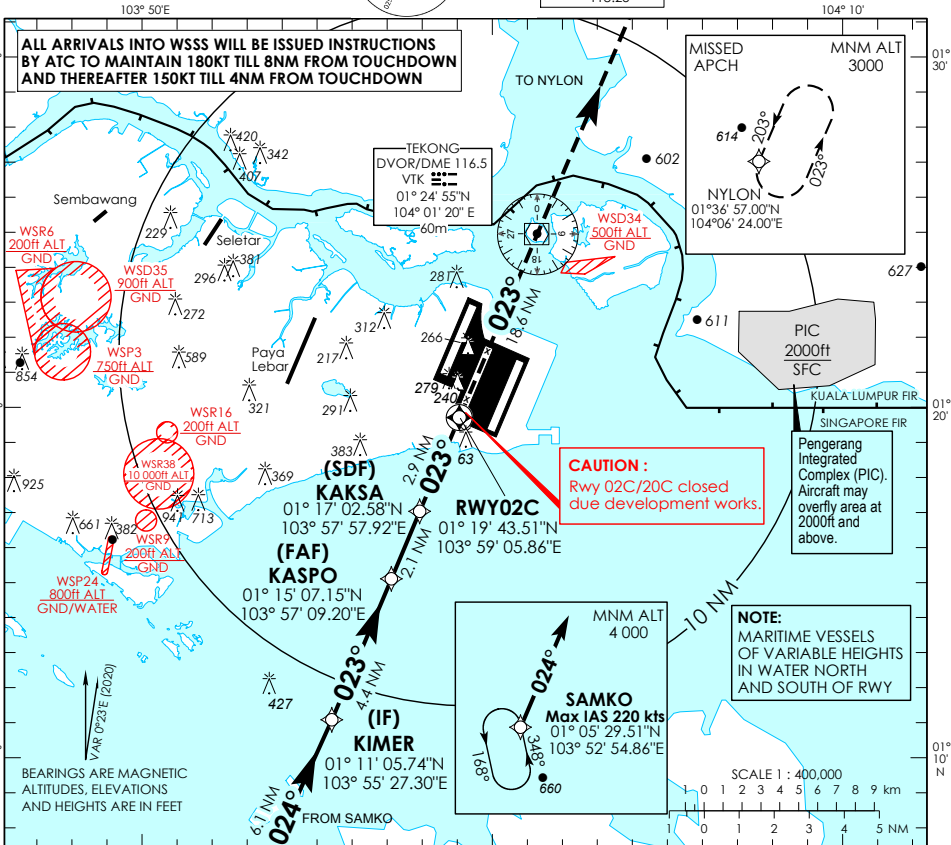


INSTRUMENT AERODROME ELEV 22ft
APPROACH HEIGHT RELATED TO
CHART - ICAO THR RWY 02C - ELEV 14ft



D-ATIS AP ID	WSSS
APP	128.025
TWR	124.05
	119.3
	118.6
	118.25

SINGAPORE/
SINGAPORE CHANGI
RNP RWY 02C



ELEV 14 (THR RWY 02C)		OCA (OCH)				NAUTICAL MILES FROM THR RWY 02C	
Category of Aircraft		A	B	C	D		
LNAV	2.5%		490 (480)				
LNAV without SDF	2.5%		890 (880)				
LNAV/VNAV	2.5%		360 (350)				
Fix		SAMKO	KIMER	KASPO	KAKSA	RW02C	NYLON
Altitude (Height)		4000 (3986)	2000 (1986)	1600 (1586)	990 (976)	490 (476)	3000 (2986)
Speed	knots	80	100	120	140	160	180
FAF - MAP1 5nm	min : s	3 : 45	3 : 00	2 : 30	2 : 09	1 : 53	1 : 40
Rate of descent/GS	ft/min	425	531	637	743	849	955

SINGAPORE CHANGI RNP-APCH RWY 02C – Approach from SAMKO

Path Terminator	Waypoint	Fly-Over	Course °M (°T)	Magnetic Variation	Distance (NM)	Turn Direction	Altitude (FT)	Speed Limit (KT)	VPA/TCH(FT)	Navigation Specification
IF	SAMKO	-	-	-0.4	-	-	A040+	220	-	RNP APCH
TF	KIMER	-	024 (024.4)	-0.4	6.1	-	A020+	-	-	RNP APCH
TF	KASPO	-	023 (023.4)	-0.4	4.4	-	A016+	-	-	RNP APCH
TF	KAKSA	-	023 (023.4)	-0.4	2.1	-	990ft+	-	-	RNP APCH
TF	RW02C	Y	023 (023.4)	-0.4	2.9	-	-	-	-3.0° / 50	RNP APCH
DF	NYLON	-	-	-0.4	-	-	A030+	-	-	RNP APCH

Waypoint Coordinates

Name	Latitude	Longitude
SAMKO (IAF)	01° 05' 29.51" N	103° 52' 54.86" E
KIMER (IF)	01° 11' 05.74" N	103° 55' 27.30" E
KASPO (FAF)	01° 15' 07.15" N	103° 57' 09.20" E
KAKSA (SDF)	01° 17' 02.58" N	103° 57' 57.92" E
RW02C	01° 19' 43.51" N	103° 59' 05.86" E
NYLON	01° 36' 57.00" N	104° 06' 24.00" E