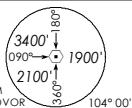


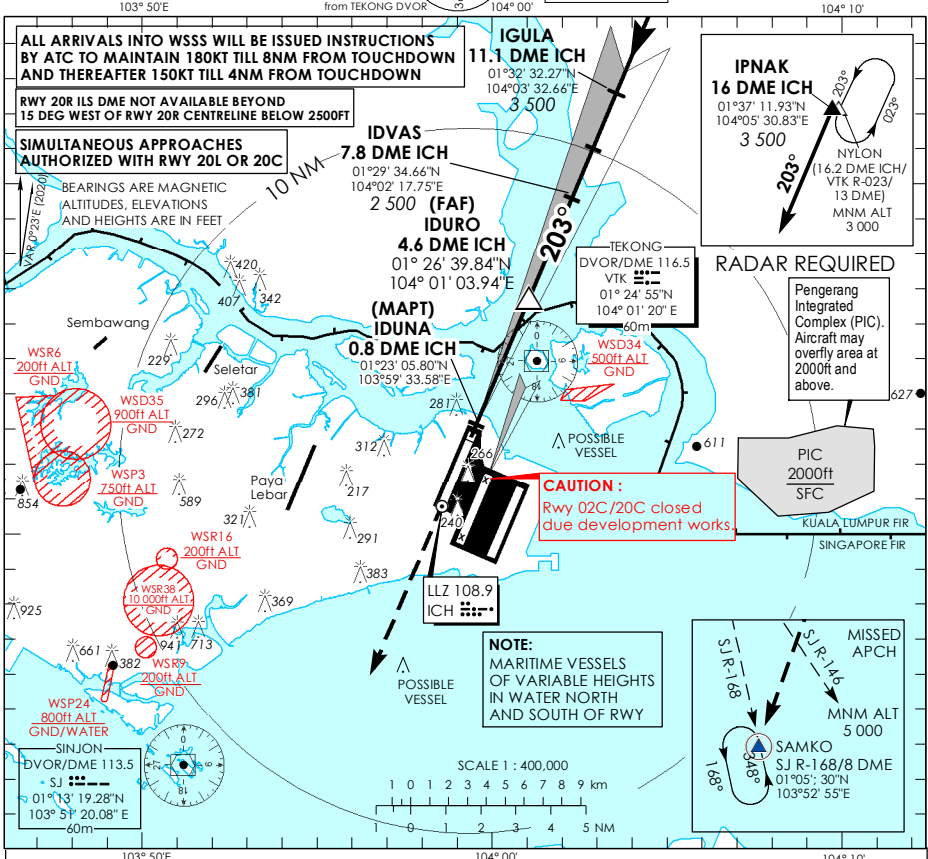
INSTRUMENT APPROACH CHART - ICAO

AERODROME ELEV **22ft**
HEIGHT RELATED TO
DTHR RWY 20R - ELEV **13ft**

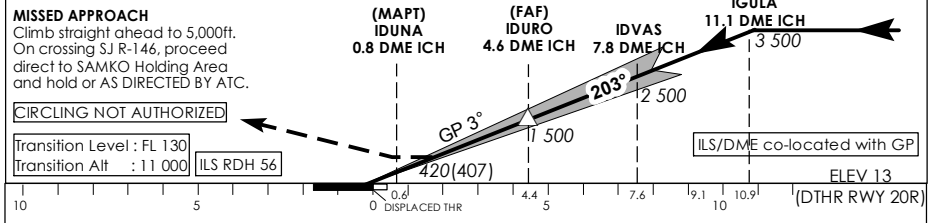


D-ATIS AP ID WSSS	128.025
APP	124.05
TWR	119.3
	118.6
	118.25

SINGAPORE/ SINGAPORE CHANGI ICH ILS/DME RWY 20R



This procedure requires a missed approach climb gradient of 3.7% (225 ft/NM) until passing 2,500ft. For aircraft which can only achieve a 2.5% (152 ft/NM) climb gradient, the CAT1 OCA (OCH) is 633ft (680ft).



*** TIMING NOT AUTHORIZED WHEN GP INOP**

Category of Aircraft	OCA (OCH)				
	A	B	C	D	D _L
Straight-in	CAT I ILS 152 (139)	159 (146)	179 (166)	192 (179)	195 (182)
	GP INOP	420 (407)			
Distance	4 DME		3 DME		2 DME
Altitude (Height)	1290 (1277)		970 (957)		650 (637)
Speed	70 knots		120		150
	185		150		185
FAF - MAPT 3.9nm	min : s *		1 : 57		1 : 34
Rate of descent/GS	ft/min		370		635
			795		980