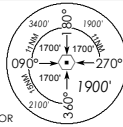


**INSTRUMENT
APPROACH
CHART**

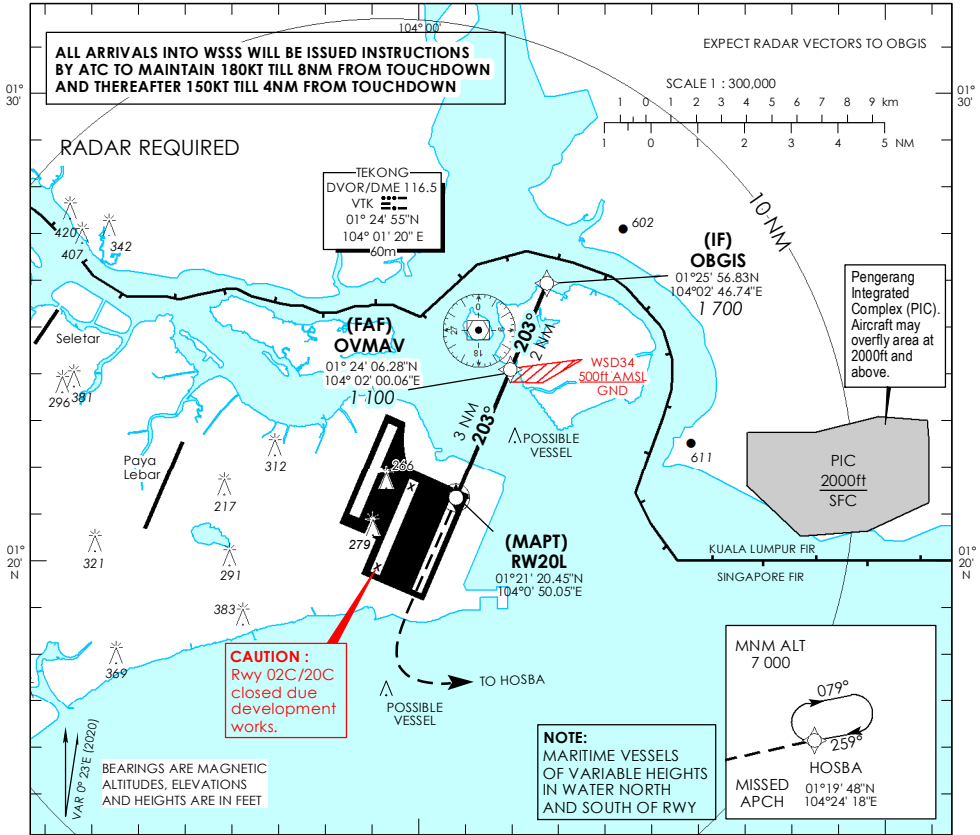
AERODROME ELEV **22ft**
HEIGHT RELATED TO
THR RWY 20L - ELEV **16ft**



D-ATIS	AP ID	WSSS
APP	124.05	128.6
TWR	124.6	131.4

**SINGAPORE/
SINGAPORE CHANGI
RNP RWY 20L**

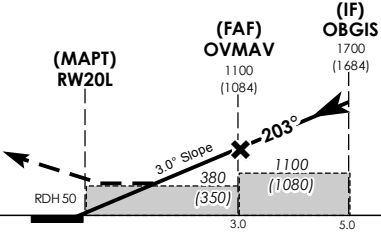
MSA 25 NM
from TEKONG DVOR



This procedure requires a missed approach climb gradient of 5% (304 ft/NM) until passing 3,000ft.
For aircraft which can only achieve a 2.5% (152 ft/NM) climb gradient, the CAT I OCA (OCH) is 1080ft (1050ft).

MISSED APPROACH
Climb straight to 1 500ft, turn left climbing to 7 000ft to HOSBA.
Hold at HOSBA or AS DIRECTED BY ATC.
No turn before MAPT.

CIRCLING NOT AUTHORIZED



Transition Level : FL 130
Transition Alt : 11 000

MINIMUM TEMPERATURE FOR BARO-VNAV APPROACHES: 5°C

ELEV 16
(THR RWY 20L)

		OCA (OCH)			
Category of Aircraft		A	B	C	D
LNAV/VNAV	5%		280 (260)		
LNAV	5%		380 (350)		
Distance		OBGIS		OVM	
Altitude (Height)		1700 (1684)		1100 (1084)	
Speed		70	120	150	185
FAF - MAPT 3.0nm	knots	2 : 34	1 : 30	1 : 12	0 : 58
Rate of descent/GS	ft/min	370	635	795	980

SINGAPORE CHANGI RNP-APCH RWY 20L – Approach from OBGIS

Path Terminator	Waypoint	Fly-Over	Course °M (°T)	Magnetic Variation	Distance (NM)	Turn Direction	Altitude (FT)	Speed Limit (KT)	VPA/ TCH(FT)	Navigation Specification
IF	OBGIS	-	203 (203.4)	-0.4	-	-	A017+	180	-	RNP APCH
TF	OVMAN	-	203 (203.4)	-0.4	2	-	A011+	150	-	RNP APCH
TF	RW20L	Y	203 (203.4)	-0.4	3	-	-	-	-3.0° / 50	RNP APCH
CA	-	-	203 (203.4)	-0.4	-	L	A015+	-	-	RNP APCH
DF	HOSBA	-	-	-	-	-	A070+	-	-	RNP APCH

Waypoint Coordinates

Name	Latitude	Longitude
OBGIS (IF)	01° 25' 56.83" N	104° 02' 46.74" E
OVMAN (FAF)	01° 24' 06.28" N	104° 02' 00.06" E
RW20L	01° 21' 20.45" N	104° 00' 50.05" E
HOSBA	01° 19' 48.00" N	104° 24' 18.00" E