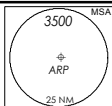


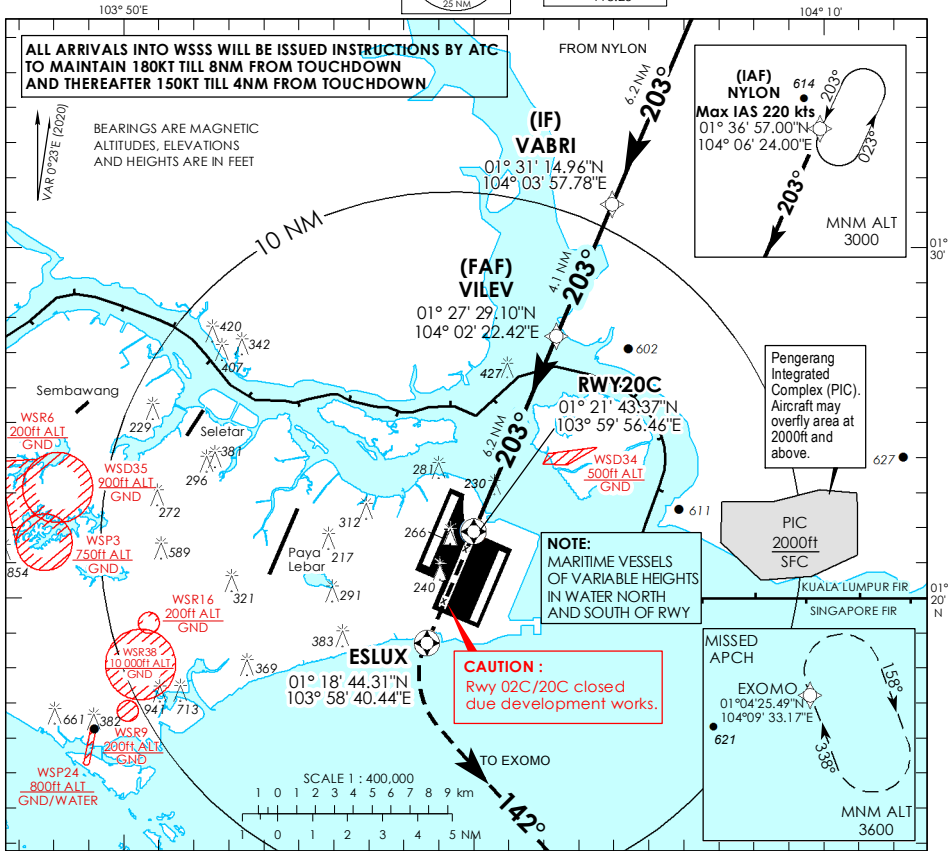
INSTRUMENT APPROACH CHART - ICAO

AERODROME ELEV **22ft**
HEIGHT RELATED TO
THR RWY 20C - ELEV **15ft**



D-TIS AP ID WSSS	128.025
APP	124.05
TWR	119.3
	118.6
	118.25

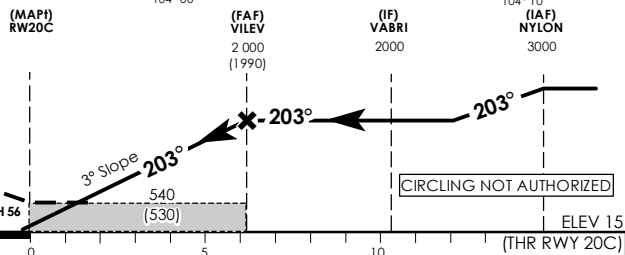
SINGAPORE/ SINGAPORE CHANGI RNP RWY 20C



Transition Level : FL 130
Transition Alt : 11 000

MISSED APPROACH:
CLIMB DIRECT TO ESLUX.
TURN LEFT TO MAGNETIC
COURSE 142° TO JOIN THE
HOLDING AT 3600FT OR ABOVE
OR AS DIRECTED BY ATC.

MINIMUM TEMPERATURE
FOR BARO-VNAV
APPROACHES: 5°C



Category of Aircraft	NAUTICAL MILES FROM DTHR RWY 20C							
	OCA (OCH)							
	A	B	C	D				
LNAV/VNAV	2.5%	490 (480)						
LNAV	2.5%	540 (530)						
Fix	NYLON	VABRI	VILEV	RW20C	ESLUX	EXOMO		
Altitude (Height)	3000 (2985)	2000 (1985)	2000 (1985)	540 (525)	540 (525)	3600 (3585)		
Speed	knots	80	100	120	140	160	180	
FAF - MAPt 6.2 nm	min : s	4 : 39	3 : 44	3 : 06	2 : 40	2 : 20	2 : 04	
Rate of descent/GS	ft/min	425	531	637	743	849	955	

SINGAPORE CHANGI RNP-APCH RWY 20C – Approach from NYLON

Path Terminator	Waypoint	Fly-Over	Course °M (°T)	Magnetic Variation	Distance (NM)	Turn Direction	Altitude (FT)	Speed Limit (KT)	VPA/TCH(FT)	Navigation Specification
IF	NYLON	-	-	-0.4	-	-	A030+	220	-	RNP APCH
TF	VABRI	-	203 (203.4)	-0.4	6.2	-	A020+	-	-	RNP APCH
TF	VILEV	-	203 (203.4)	-0.4	4.1	-	A020+	-	-	RNP APCH
TF	RW20C	Y	203 (203.4)	-0.4	6.2	-	-	-	-3.0° / 50	RNP APCH
DF	ESLUX	Y	-	-0.4	-	L	-	-	-	RNP APCH
TF	EXOMO	-	142(142.4)	-0.4	-	-	A036+	-	-	RNP APCH

Waypoint Coordinates

Name	Latitude	Longitude
NYLON (IAF)	01° 36' 57.00" N	104° 06' 24.00" E
VABRI (IF)	01° 31' 14.96" N	104° 03' 57.78" E
VILEV (FAF)	01° 27' 29.10" N	104° 02' 22.42" E
RW20C	01° 21' 43.37" N	103° 59' 56.46" E
ESLUX	01° 18' 44.31" N	103° 58' 40.44" E
EXOMO	01° 04' 25.49" N	104° 09' 33.17" E