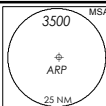


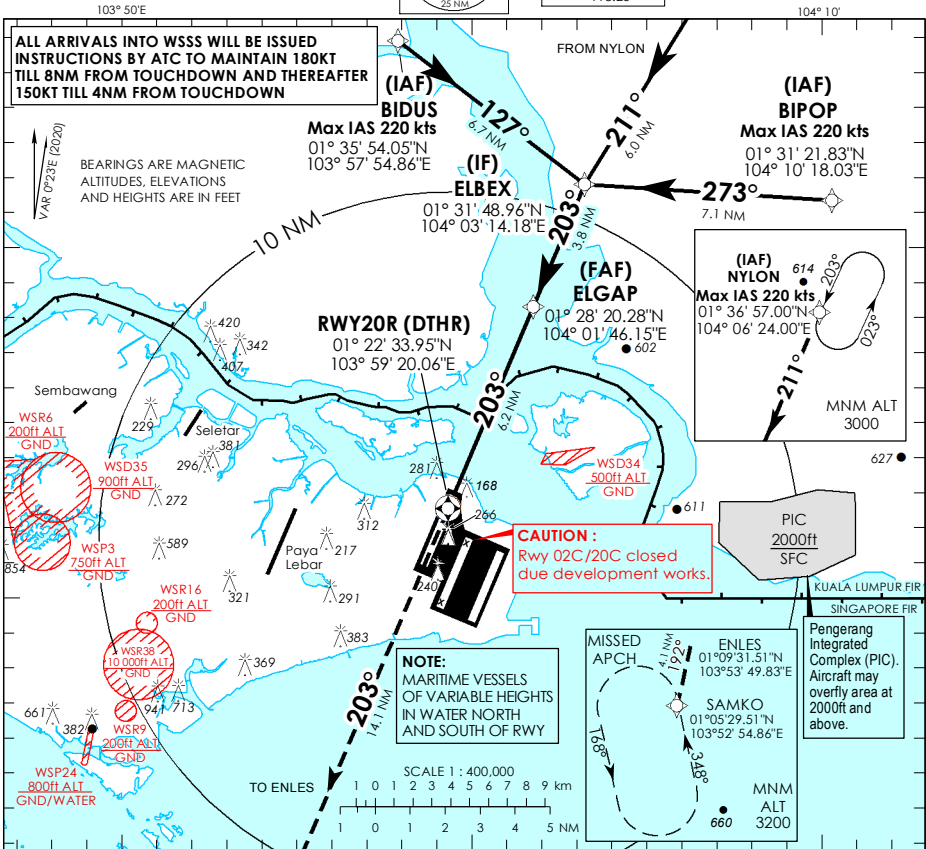
**INSTRUMENT  
APPROACH  
CHART - ICAO**

AERODROME ELEV **22ft**  
HEIGHT RELATED TO  
DTHR RWY 20R - ELEV **13ft**



D-TIS	AP ID	WSSS
APP	124.05	
TWR	119.3	
	118.6	
	118.25	

**SINGAPORE/  
SINGAPORE CHANGI  
RNP RWY 20R**

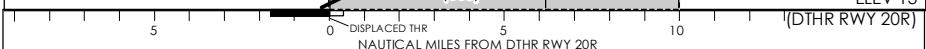


Transition Level: FL 130  
Transition Alt : 11 000

MISSED APPROACH:  
CLIMB DIRECT TO ENLES.  
TURN LEFT TO SAMKO TO  
JOIN THE HOLDING AT  
3200FT OR ABOVE OR AS  
DIRECTED BY ATC.

MINIMUM TEMPERATURE  
FOR BARO-VNAV  
APPROACHES: 5°C

(MAP1) RWY 20R	(FAF) ELGAP	(IF) ELBEX	(IAF) BIDUS	(IAF) BIPOP	(IAF) NYLON
	2 000 (1990)	2000	3400	3000	3000



		NAUTICAL MILES FROM DTHR RWY 20R							
		OCA (OCH)							
Category of Aircraft		A	B	C	D				
LNAV/VNAV	2.5%	690 (680)							
LNAV	2.5%	690 (680)							
Fix		BIDUS	NYLON	BIPOP	ELBEX	ELGAP	RWY 20R	ENLES	SAMKO
Altitude (Height)		3400 (3387)	3000 (2987)	3000 (2987)	2000 (1987)	2000 (1987)	690 (680)	2180 (2167)	3200 (3187)
Speed	knots	80	100	100	120	140	140	160	180
FAF - MAP1 6.2 nm	min : s	4 : 39	3 : 44	3 : 44	3 : 06	2 : 40	2 : 40	2 : 20	2 : 04
Rate of descent/GS	ft/min	425	531	531	637	743	743	849	955

**SINGAPORE CHANGI RNP-APCH RWY 20R – Approach from BIDUS**

Path Terminator	Waypoint	Fly-Over	Course °M (°T)	Magnetic Variation	Distance (NM)	Turn Direction	Altitude (FT)	Speed Limit (KT)	VPA/ TCH(FT)	Navigation Specification
IF	BIDUS	-	-	-0.4	-	-	A034+	220	-	RNP APCH
TF	ELBEX	-	127 (127.4)	-0.4	6.7	R	A020+	-	-	RNP APCH
TF	ELGAP	-	203 (203.4)	-0.4	3.8	-	A020+	-	-	RNP APCH
TF	RW20R	Y	203 (203.4)	-0.4	6.2	-	-	-	-3.0° / 50	RNP APCH
DF	ENLES	-	-	-0.4	-	L	-	-	-	RNP APCH
TF	SAMKO	-	192 (192.4)	-0.4	4.1	-	A032+	-	-	RNP APCH

**SINGAPORE CHANGI RNP-APCH RWY 20R – Approach from NYLON**

Path Terminator	Waypoint	Fly-Over	Course °M (°T)	Magnetic Variation	Distance (NM)	Turn Direction	Altitude (FT)	Speed Limit (KT)	VPA/ TCH(FT)	Navigation Specification
IF	NYLON	-	-	-0.4	-	-	A030+	220	-	RNP APCH
TF	ELBEX	-	211 (211.4)	-0.4	6.0	L	A020+	-	-	RNP APCH
TF	ELGAP	-	203 (203.4)	-0.4	3.8	-	A020+	-	-	RNP APCH
TF	RW20R	Y	203 (203.4)	-0.4	6.2	-	-	-	-3.0° / 50	RNP APCH
DF	ENLES	-	-	-0.4	-	L	-	-	-	RNP APCH
TF	SAMKO	-	192 (192.4)	-0.4	4.1	-	A032+	-	-	RNP APCH

**SINGAPORE CHANGI RNP-APCH RWY 20R – Approach from BIPOP**

Path Terminator	Waypoint	Fly-Over	Course °M (°T)	Magnetic Variation	Distance (NM)	Turn Direction	Altitude (FT)	Speed Limit (KT)	VPA/ TCH(FT)	Navigation Specification
IF	BIPOP	-	-	-0.4	-	-	A030+	220	-	RNP APCH
TF	ELBEX	-	273 (273.4)	-0.4	7.1	L	A020+	-	-	RNP APCH
TF	ELGAP	-	203 (203.4)	-0.4	3.8	-	A020+	-	-	RNP APCH
TF	RW20R	Y	203 (203.4)	-0.4	6.2	-	-	-	-3.0° / 50	RNP APCH
DF	ENLES	-	-	-0.4	-	L	-	-	-	RNP APCH
TF	SAMKO	-	192 (192.4)	-0.4	4.1	-	A032+	-	-	RNP APCH

**Waypoint Coordinates**

Name	Latitude	Longitude
BIDUS (IAF)	01° 35' 54.05" N	103° 57' 54.86" E
NYLON (IAF)	01° 36' 57.00" N	104° 06' 24.00" E
BIPOP (IAF)	01° 31' 21.83" N	104° 10' 18.03" E
ELBEX (IF)	01° 31' 48.96" N	104° 03' 14.18" E
ELGAP (FAF)	01° 28' 20.28" N	104° 01' 46.15" E
RW20R	01° 22' 33.95" N	103° 59' 20.06" E
ENLES	01° 09' 31.51" N	103° 53' 49.83" E
SAMKO	01° 05' 29.51" N	103° 52' 54.86" E