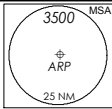


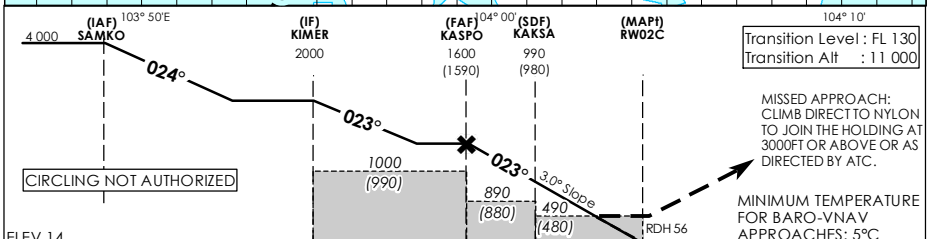
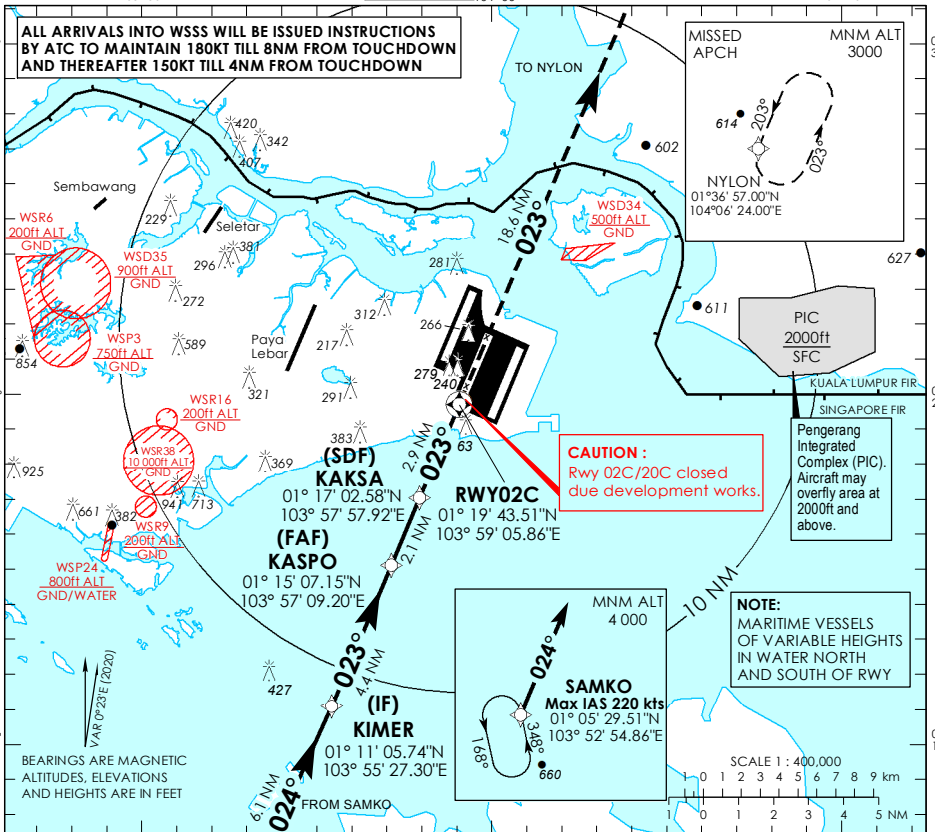
INSTRUMENT APPROACH CHART - ICAO

AERODROME ELEV **22ft**
HEIGHT RELATED TO
THR RWY 02C - ELEV **14ft**



D-ATIS AP ID	WSSS
APP	124.05
TWR	119.3
	118.6
	118.25

SINGAPORE/ SINGAPORE CHANGI RNP RWY 02C



ELEV 14 (THR RWY 02C)

		OCA (OCH)			
Category of Aircraft		A	B	C	D
LNAV	2.5%		490 (480)		
LNAV without SDF	2.5%		890 (880)		
LNAV/VNAV	2.5%		360 (350)		
Fix		SAMKO	KIMER	KASPO	KAKSA
Altitude (Height)		4000 (3986)	2000 (1986)	1600 (1586)	990 (976)
Speed	knots	80	100	120	140
		160	180	160	180
FAF - MAP1 5nm	min : s	3 : 45	3 : 00	2 : 30	2 : 09
Rate of descent/GS	ft/min	425	531	637	743
				849	955

SINGAPORE CHANGI RNP-APCH RWY 02C – Approach from SAMKO

Path Terminator	Waypoint	Fly-Over	Course °M (°T)	Magnetic Variation	Distance (NM)	Turn Direction	Altitude (FT)	Speed Limit (KT)	VPA/TCH(FT)	Navigation Specification
IF	SAMKO	-	-	-0.4	-	-	A040+	220	-	RNP APCH
TF	KIMER	-	024 (024.4)	-0.4	6.1	-	A020+	-	-	RNP APCH
TF	KASPO	-	023 (023.4)	-0.4	4.4	-	A016+	-	-	RNP APCH
TF	KAKSA	-	023 (023.4)	-0.4	2.1	-	990ft+	-	-	RNP APCH
TF	RW02C	Y	023 (023.4)	-0.4	2.9	-	-	-	-3.0° / 50	RNP APCH
DF	NYLON	-	-	-0.4	-	-	A030+	-	-	RNP APCH

Waypoint Coordinates

Name	Latitude	Longitude
SAMKO (IAF)	01° 05' 29.51" N	103° 52' 54.86" E
KIMER (IF)	01° 11' 05.74" N	103° 55' 27.30" E
KASPO (FAF)	01° 15' 07.15" N	103° 57' 09.20" E
KAKSA (SDF)	01° 17' 02.58" N	103° 57' 57.92" E
RW02C	01° 19' 43.51" N	103° 59' 05.86" E
NYLON	01° 36' 57.00" N	104° 06' 24.00" E