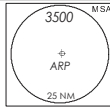


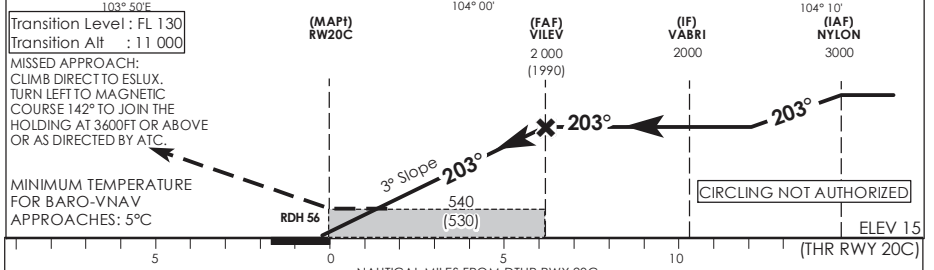
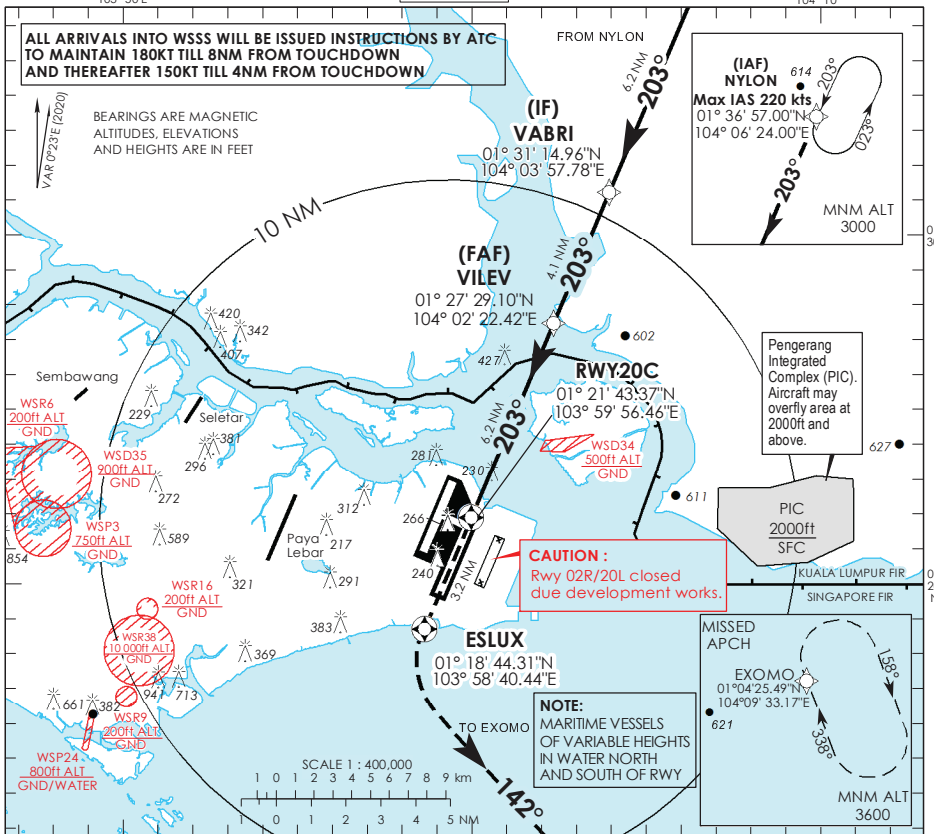
**INSTRUMENT
APPROACH
CHART - ICAO**

AERODROME ELEV **22ft**
HEIGHT RELATED TO
THR RWY 20C - ELEV **15ft**



D-ATIS AP ID	WSSS
APP	124.05
TWR	119.3
	118.6
	118.25

**SINGAPORE/
SINGAPORE CHANGI
RNP RWY 20C**



		OCA (OCH)					
Category of Aircraft		A	B	C	D		
LNAV/VNAV	2.5%	490 (480)					
LNAV	2.5%	540 (530)					
Fix		NYLON	VABRI	VILEV	RW20C	ESLUX	EXOMO
Altitude (Height)		3000 (2985)	2000 (1985)	2000 (1985)	540 (525)	540 (525)	3600 (3585)
Speed	knots	80	100	120	140	160	180
FAF - MAP1	min : s	4 : 39	3 : 44	3 : 06	2 : 40	2 : 20	2 : 04
Rate of descent/GS	ft/min	425	531	637	743	849	955

SINGAPORE CHANGI RNP-APCH RWY 20C – Approach from NYLON

Path Terminator	Waypoint	Fly-Over	Course °M (°T)	Magnetic Variation	Distance (NM)	Turn Direction	Altitude (FT)	Speed Limit (KT)	VPA/TCH(FT)	Navigation Specification
IF	NYLON	-	-	-0.4	-	-	A030+	220	-	RNP APCH
TF	VABRI	-	203 (203.4)	-0.4	6.2	-	A020+	-	-	RNP APCH
TF	VILEV	-	203 (203.4)	-0.4	4.1	-	A020+	-	-	RNP APCH
TF	RW20C	Y	203 (203.4)	-0.4	6.2	-	-	-	-3.0° / 50	RNP APCH
DF	ESLUX	Y	-	-0.4	-	L	-	-	-	RNP APCH
TF	EXOMO	-	142(142.4)	-0.4	-	-	A036+	-	-	RNP APCH

Waypoint Coordinates

Name	Latitude	Longitude
NYLON (IAF)	01° 36' 57.00" N	104° 06' 24.00" E
VABRI (IF)	01° 31' 14.96" N	104° 03' 57.78" E
VILEV (FAF)	01° 27' 29.10" N	104° 02' 22.42" E
RW20C	01° 21' 43.37" N	103° 59' 56.46" E
ESLUX	01° 18' 44.31" N	103° 58' 40.44" E
EXOMO	01° 04' 25.49" N	104° 09' 33.17" E