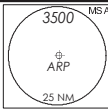


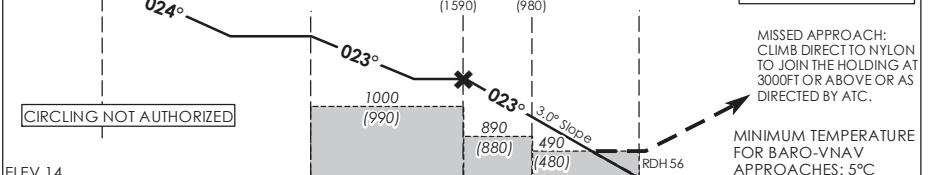
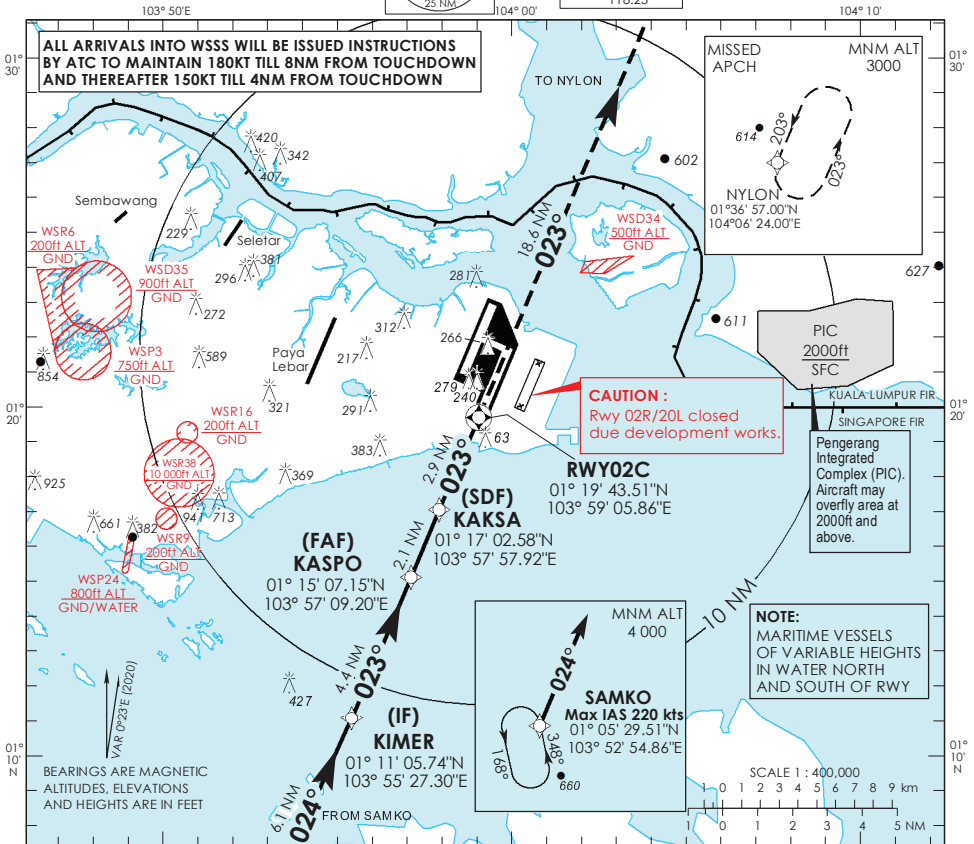
**INSTRUMENT
APPROACH
CHART - ICAO**

AERODROME ELEV **22ft**
HEIGHT RELATED TO
THR RWY 02C - ELEV **14ft**



D-ATIS AP ID WSSS	128.025
APP	124.05
TWR	119.3
	118.6
	118.25

**SINGAPORE/
SINGAPORE CHANGI
RNP RWY 02C**



ELEV 14 (THR RWY 02C)

12 10 5 0 NAUTICAL MILES FROM THR RWY 02C

		OCA (OCH)			
Category of Aircraft		A	B	C	D
LNAV	2.5%		490 (480)		
LNAV without SDF	2.5%		890 (880)		
LNAV/VNAV	2.5%		360 (350)		

Fix		SAMKO	KIMER	KASPO	KAUSA	RW02C	NYLON
Altitude (Height)		4000 (3986)	2000 (1986)	1600 (1586)	990 (976)	490 (476)	3000 (2986)
Speed	knots	80	100	120	140	160	180
FAF - MAP1 5nm	min : s	3 : 45	3 : 00	2 : 30	2 : 09	1 : 53	1 : 40
Rate of descent/GS	ft/min	425	531	637	743	849	955

SINGAPORE CHANGI RNP-APCH RWY 02C – Approach from SAMKO

Path Terminator	Waypoint	Fly-Over	Course °M (°T)	Magnetic Variation	Distance (NM)	Turn Direction	Altitude (FT)	Speed Limit (KT)	VPA/TCH(FT)	Navigation Specification
IF	SAMKO	-	-	-0.4	-	-	A040+	220	-	RNP APCH
TF	KIMER	-	024 (024.4)	-0.4	6.1	-	A020+	-	-	RNP APCH
TF	KASPO	-	023 (023.4)	-0.4	4.4	-	A016+	-	-	RNP APCH
TF	KAкса	-	023 (023.4)	-0.4	2.1	-	990ft+	-	-	RNP APCH
TF	RW02C	Y	023 (023.4)	-0.4	2.9	-	-	-	-3.0° / 50	RNP APCH
DF	NYLON	-	-	-0.4	-	-	A030+	-	-	RNP APCH

Waypoint Coordinates

Name	Latitude	Longitude
SAMKO (IAF)	01° 05' 29.51" N	103° 52' 54.86" E
KIMER (IF)	01° 11' 05.74" N	103° 55' 27.30" E
KASPO (FAF)	01° 15' 07.15" N	103° 57' 09.20" E
KAкса (SDF)	01° 17' 02.58" N	103° 57' 57.92" E
RW02C	01° 19' 43.51" N	103° 59' 05.86" E
NYLON	01° 36' 57.00" N	104° 06' 24.00" E