

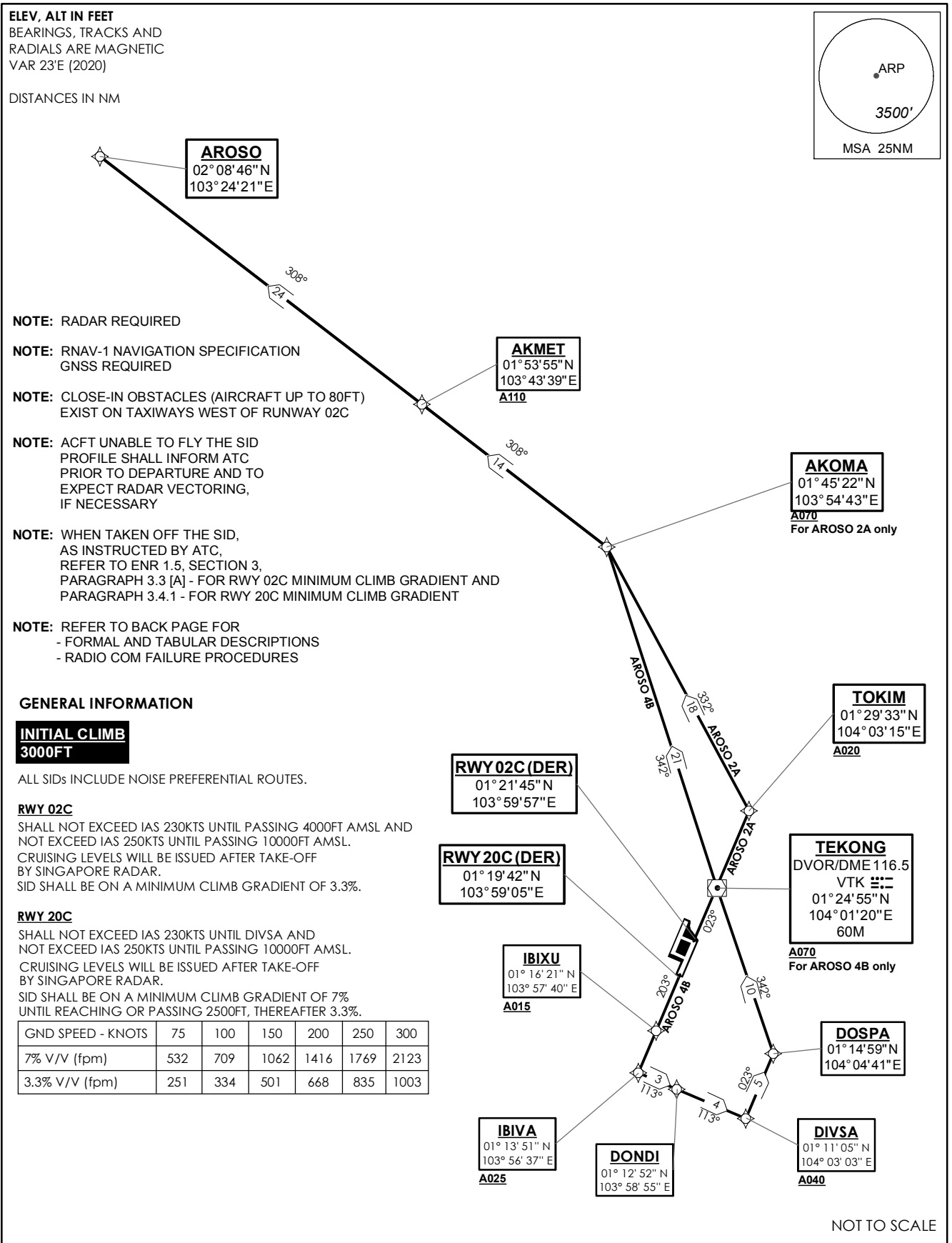
**STANDARD DEPARTURE CHART
RNAV (GNSS) -
INSTRUMENT (SID)**

TWR 118.6 / 118.25
APP 120.3
124.05
ACC 133.25

TRANSITION ALTITUDE
11 000ft

D-ATIS AP ID-WSSS
128.6

**SINGAPORE/Singapore Changi
RWY 02C/20C
AROSO DEPARTURES
AROSO 2A (R02C)
AROSO 4B (R20C)**



AROSO 2A (SID) RNAV GNSS RWY 02C - DESCRIPTIONS

Formal & Abbreviated Descriptions

Formal Description	Abbreviated Description	Path Terminator	Fly-Over required
To TOKIM on course 023° at or above 2000ft, turn left. To AKOMA at or above 7000ft, turn left. To AKMET at or above 11000ft. To AROSO.	TOKIM [M023; A020+; L] -	CF	N
	AKOMA [A070+; L] -	TF	N
	AKMET [A110+] -	TF	N
	AROSO	TF	N

Tabular Descriptions

Path Term	Waypoint Name	Fly-Over	Course °M(°T)	Magnetic Variation	Turn Direction	Altitude	Speed Limit	Navigation Spec
CF	TOKIM	-	023(022.5)	-0.5	L	A020+	-	RNAV1
TF	AKOMA	-	332(331.5)	-0.5	L	A070+	-	RNAV1
TF	AKMET	-	308(307.5)	-0.5	-	A110+	-	RNAV1
TF	AROSO	-	308(307.5)	-0.5	-	-	-	RNAV1

AROSO 4B (SID) RNAV GNSS RWY 20C - DESCRIPTIONS

Formal & Abbreviated Descriptions

Formal Description	Abbreviated Description	Path Terminator	Fly-Over required
To IBIXU on course 203° at or above 1500ft. To IBIVA at or above 2500ft, turn left. To DONDI. To DIVSA at or above 4000ft, speed 230kts, turn left. To DOSPA, turn left. To VTK at or above 7000ft. To AKOMA, turn left. To AKMET at or above 11000ft. To AROSO.	IBIXU [M203; A015+] -	CF	N
	IBIVA [A025+; L] -	TF	N
	DONDI -	TF	N
	DIVSA [A040+; K230; L] -	TF	N
	DOSPA [L] -	TF	N
	VTK [A070+] -	TF	N
	AKOMA [L] -	TF	N
	AKMET [A110+] -	TF	N
	AROSO	TF	N

Tabular Descriptions

Path Term	Waypoint Name	Fly-Over	Course °M(°T)	Magnetic Variation	Turn Direction	Altitude	Speed Limit	Navigation Spec
CF	IBIXU	-	203(202.5)	-0.5	-	A015+	-	RNAV1
TF	IBIVA	-	203(202.5)	-0.5	L	A025+	-	RNAV1
TF	DONDI	-	113(113.3)	-0.5	-	-	-	RNAV1
TF	DIVSA	-	113(113.3)	-0.5	L	A040+	K230	RNAV1
TF	DOSPA	-	023(023.6)	-0.5	L	-	-	RNAV1
TF	VTK	-	342(341.5)	-0.5	-	A070+	-	RNAV1
TF	AKOMA	-	342(341.5)	-0.5	L	-	-	RNAV1
TF	AKMET	-	308(307.5)	-0.5	-	A110+	-	RNAV1
TF	AROSO	-	308(307.5)	-0.5	-	-	-	RNAV1

RADIO COMMUNICATIONS FAILURE PROCEDURE

1	SET TRANSPONDER TO MODE A/C CODE 7600
2	<p>COMMUNICATIONS FAILURE OCCURS IMMEDIATELY AFTER DEPARTURE ON:</p> <p>RWY 02C - PROCEED STRAIGHT AHEAD TO NYLON HOLDING AREA (NHA) CLIMBING TO THE LAST ASSIGNED ALTITUDE, THEREAFTER REFER TO SINGAPORE AIP ON RADIO COMMUNICATIONS FAILURE PROCEDURE.</p> <p>RWY 20C - PROCEED STRAIGHT AHEAD TO SAMKO HOLDING AREA (SHA) CLIMBING TO THE LAST ASSIGNED ALTITUDE, THEREAFTER REFER TO SINGAPORE AIP ON RADIO COMMUNICATIONS FAILURE PROCEDURE.</p>