

STANDARD DEPARTURE CHART
RNAV (GNSS) -
INSTRUMENT (SID)

TWR 118.6 / 118.25
APP 120.3
124.05
ACC 134.4

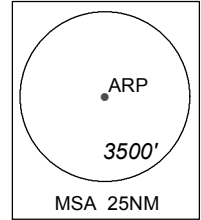
TRANSITION ALTITUDE
11 000ft

D-ATIS AP ID-WSSS
128.6

SINGAPORE/Singapore Changi
RWY 02C/20C
ANITO DEPARTURES
ANITO 6A (R02C)
ANITO 7B (R20C)

- NOTE:** RADAR REQUIRED
- NOTE:** RNAV-1 NAVIGATION SPECIFICATION GNSS REQUIRED
- NOTE:** CLOSE-IN OBSTACLES (AIRCRAFT UP TO 80FT) EXIST ON TAXIWAYS WEST OF RUNWAY 02C
- NOTE:** ACFT UNABLE TO FLY THE SID PROFILE SHALL INFORM ATC PRIOR TO DEPARTURE AND TO EXPECT RADAR VECTORING, IF NECESSARY
- NOTE:** WHEN TAKEN OFF THE SID, AS INSTRUCTED BY ATC, REFER TO ENR 1.5, SECTION 3, PARAGRAPH 3.3 [A] - FOR RWY 02C MINIMUM CLIMB GRADIENT AND PARAGRAPH 3.4.1 - FOR RWY 20C MINIMUM CLIMB GRADIENT
- NOTE:** REFER TO BACK PAGE FOR
- FORMAL AND TABULAR DESCRIPTIONS
- RADIO COM FAILURE PROCEDURES

ELEV. ALT IN FEET
BEARINGS, TRACKS AND RADIALS ARE MAGNETIC
VAR 23°E (2020)
DISTANCES IN NM



GENERAL INFORMATION

INITIAL CLIMB
3000FT

ON INITIAL CONTACT WHEN REQUESTING ATC, INFORM ATC OF THE FLIGHT LEVEL AIRCRAFT CAN CROSS ANITO
ALL SIDs INCLUDE NOISE PREFERENTIAL ROUTES.

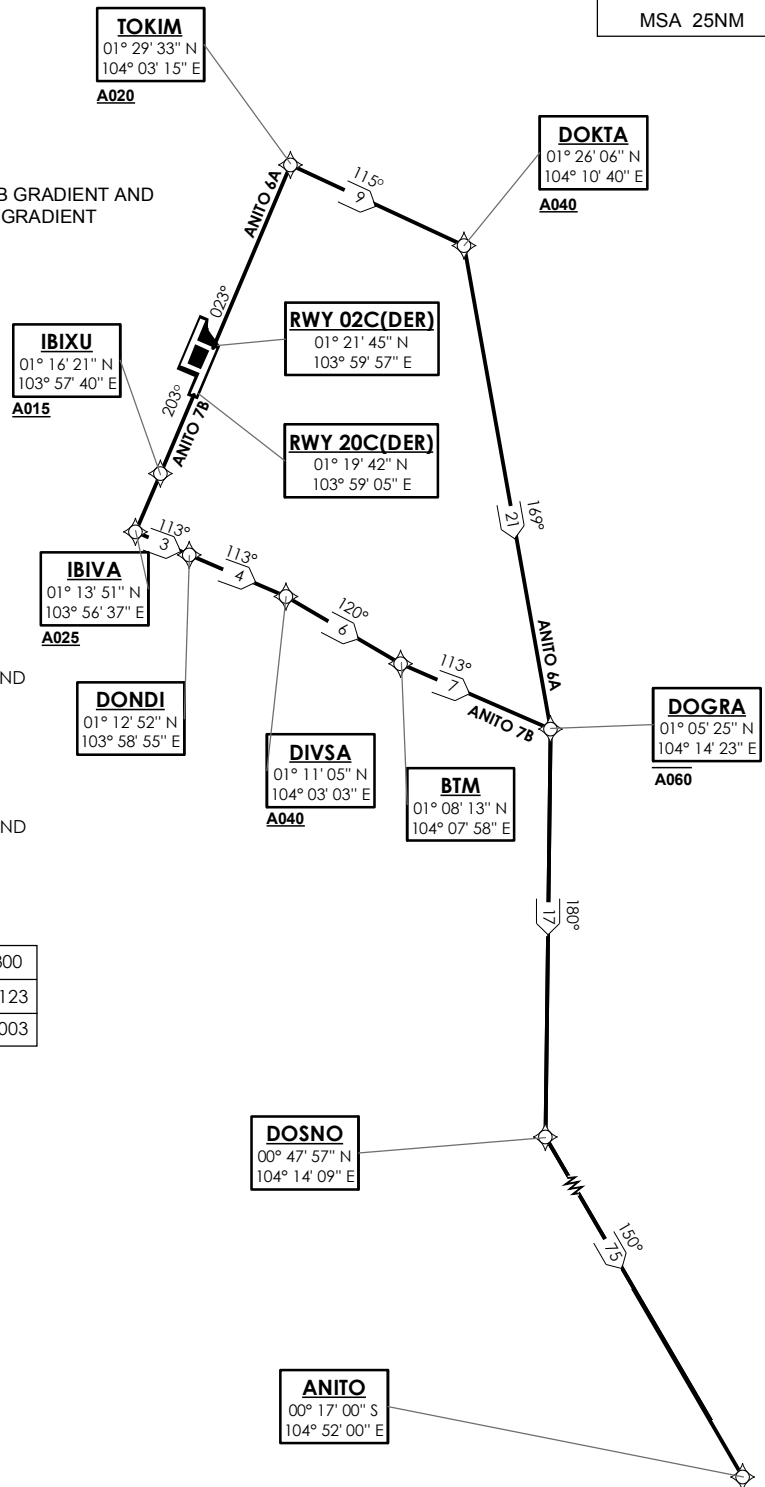
RWY 02C

SHALL NOT EXCEED IAS 230KTS UNTIL PASSING 4000FT AMSL AND NOT EXCEED IAS 250KTS UNTIL PASSING 10000FT AMSL. CRUISING LEVELS WILL BE ISSUED AFTER TAKE-OFF BY SINGAPORE RADAR. SID SHALL BE ON A MINIMUM CLIMB GRADIENT OF 3.3%.

RWY 20C

SHALL NOT EXCEED IAS 230KTS UNTIL PASSING 4000FT AMSL AND NOT EXCEED IAS 250KTS UNTIL PASSING 10000FT AMSL. CRUISING LEVELS WILL BE ISSUED AFTER TAKE-OFF BY SINGAPORE RADAR. SID SHALL BE ON A MINIMUM CLIMB GRADIENT OF 7% UNTIL REACHING OR PASSING 2500FT, THEREAFTER 3.3%.

GND SPEED - KNOTS	75	100	150	200	250	300
7% V/V (fpm)	532	709	1062	1416	1769	2123
3.3% V/V (fpm)	251	334	501	668	835	1003



NOT TO SCALE

5 NOV 2020

ANITO 6A (SID) RNAV GNSS RWY 02C - DESCRIPTIONS**Formal & Abbreviated Descriptions**

Formal Description	Abbreviated Description	Path Terminator	Fly-Over required
To TOKIM on course 023° at or above 2000ft, turn right. To DOKTA at or above 4000ft, turn right. To DOGRA at or below 6000ft, turn right. To DOSNO, turn left. To ANITO.	TOKIM [M023; A020+; R] -	CF	N
	DOKTA [A040+; R] -	TF	N
	DOGRA [A060-; R] -	TF	N
	DOSNO [L] -	TF	N
	ANITO	TF	N

Tabular Descriptions

Path Term	Waypoint Name	Fly-Over	Course °M(°T)	Magnetic Variation	Turn Direction	Altitude	Speed Limit	Navigation Spec
CF	TOKIM	-	023(022.5)	-0.5	R	A020+	-	RNAV1
TF	DOKTA	-	115(114.5)	-0.5	R	A040+	-	RNAV1
TF	DOGRA	-	169(168.5)	-0.5	R	A060-	-	RNAV1
TF	DOSNO	-	180(179.5)	-0.5	L	-	-	RNAV1
TF	ANITO	-	150(149.5)	-0.5	-	-	-	RNAV1

ANITO 7B (SID) RNAV GNSS RWY 20C - DESCRIPTIONS**Formal & Abbreviated Descriptions**

Formal Description	Abbreviated Description	Path Terminator	Fly-Over required
To IBIXU on course 203° at or above 1500ft. To IBIVA at or above 2500ft, turn left. To DONDI. To DIVSA at or above 4000ft, turn right. To BTM, turn left. To DOGRA at or below 6000ft, turn right. To DOSNO, turn left. To ANITO.	IBIXU [M203; A015+] -	CF	N
	IBIVA [A025+; L] -	TF	N
	DONDI -	TF	N
	DIVSA [A040+; R] -	TF	N
	BTM [L] -	TF	N
	DOGRA [A060-; R] -	TF	N
	DOSNO [L] -	TF	N
ANITO	TF	N	

Tabular Descriptions

Path Term	Waypoint Name	Fly-Over	Course °M(°T)	Magnetic Variation	Turn Direction	Altitude	Speed Limit	Navigation Spec
CF	IBIXU	-	203(202.5)	-0.5	-	A015+	-	RNAV1
TF	IBIVA	-	203(202.5)	-0.5	L	A025+	-	RNAV1
TF	DONDI	-	113(112.5)	-0.5	-	-	-	RNAV1
TF	DIVSA	-	113(112.5)	-0.5	R	A040+	-	RNAV1
TF	BTM	-	120(119.5)	-0.5	L	-	-	RNAV1
TF	DOGRA	-	113(112.5)	-0.5	R	A060-	-	RNAV1
TF	DOSNO	-	180(179.5)	-0.5	L	-	-	RNAV1
TF	ANITO	-	150(149.5)	-0.5	-	-	-	RNAV1

RADIO COMMUNICATIONS FAILURE PROCEDURE

1	SET TRANSPONDER TO MODE A/C CODE 7600
2	COMMUNICATIONS FAILURE OCCURS IMMEDIATELY AFTER DEPARTURE ON: RWY 02C - PROCEED STRAIGHT AHEAD TO NYLON HOLDING AREA (NHA) CLIMBING TO THE LAST ASSIGNED ALTITUDE, THEREAFTER REFER TO SINGAPORE AIP ON RADIO COMMUNICATIONS FAILURE PROCEDURE. RWY 20C - PROCEED STRAIGHT AHEAD TO SAMKO HOLDING AREA (SHA) CLIMBING TO THE LAST ASSIGNED ALTITUDE, THEREAFTER REFER TO SINGAPORE AIP ON RADIO COMMUNICATIONS FAILURE PROCEDURE.