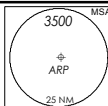


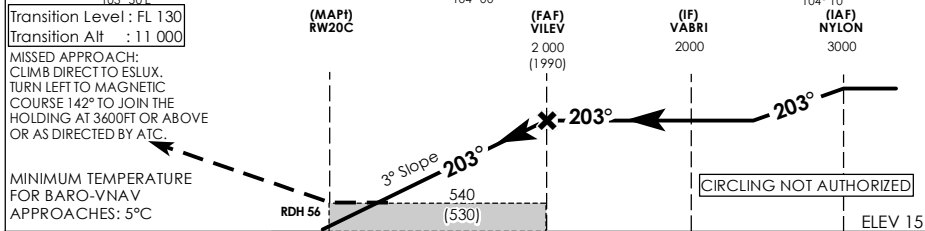
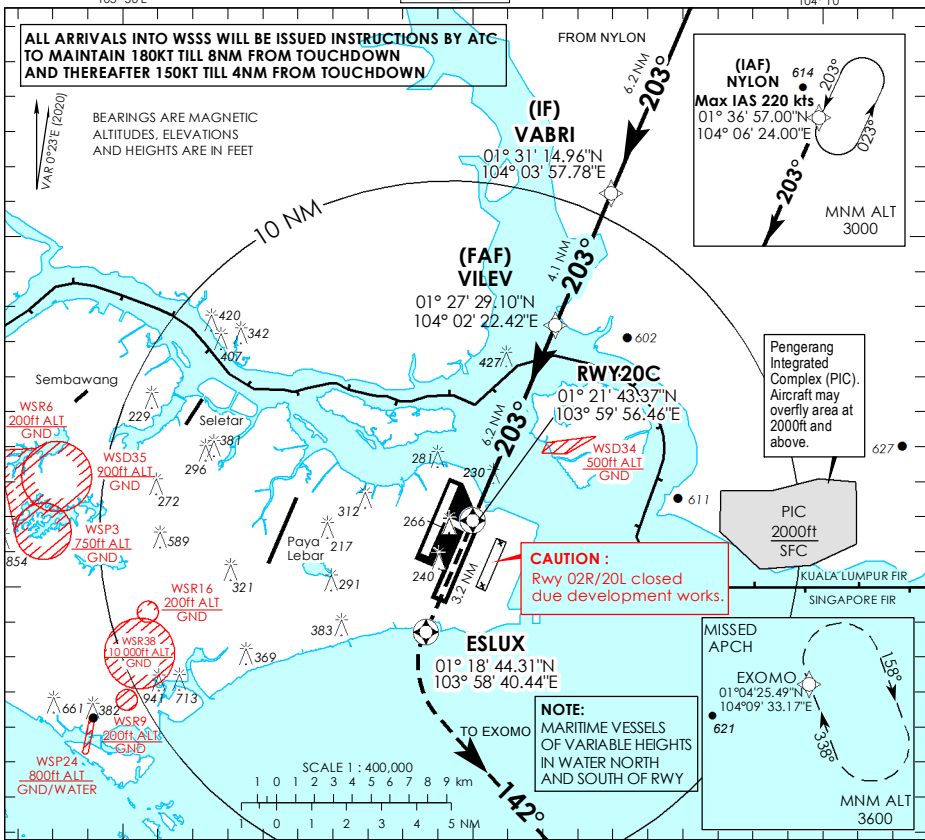
INSTRUMENT APPROACH CHART - ICAO

AERODROME ELEV **22ft**
HEIGHT RELATED TO
THR RWY 20C - ELEV **15ft**



| | | |
|-------|---------|--------|
| D-TAS | AP ID | WSS |
| APP | 128.025 | 124.05 |
| TWR | 119.3 | 118.6 |
| | 118.25 | |

SINGAPORE/ SINGAPORE CHANGI RNP RWY 20C



| Category of Aircraft | OCA (OCH) | | | | | | |
|----------------------|-------------|-------------|-------------|-----------|-----------|-------------|--------|
| | A | B | C | D | | | |
| LNAV/VNAV | 2.5% | 490 (480) | | | | | |
| LNAV | 2.5% | 540 (530) | | | | | |
| Fix | NYLON | VABRI | VILEV | RW20C | ESLSUX | EXOMO | |
| Altitude (Height) | 3000 (2985) | 2000 (1985) | 2000 (1985) | 540 (525) | 540 (525) | 3600 (3585) | |
| Speed | knots | 80 | 100 | 120 | 140 | 160 | 180 |
| FAF - MAP 6.2 nm | min : s | 4 : 39 | 3 : 44 | 3 : 06 | 2 : 40 | 2 : 20 | 2 : 04 |
| Rate of descent/GS | ft/min | 425 | 531 | 637 | 743 | 849 | 955 |