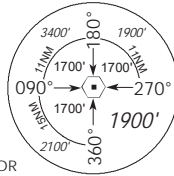


**INSTRUMENT APPROACH CHART**

AERODROME ELEV **22ft**  
 HEIGHT RELATED TO  
 THR RWY 20L - ELEV **16ft**

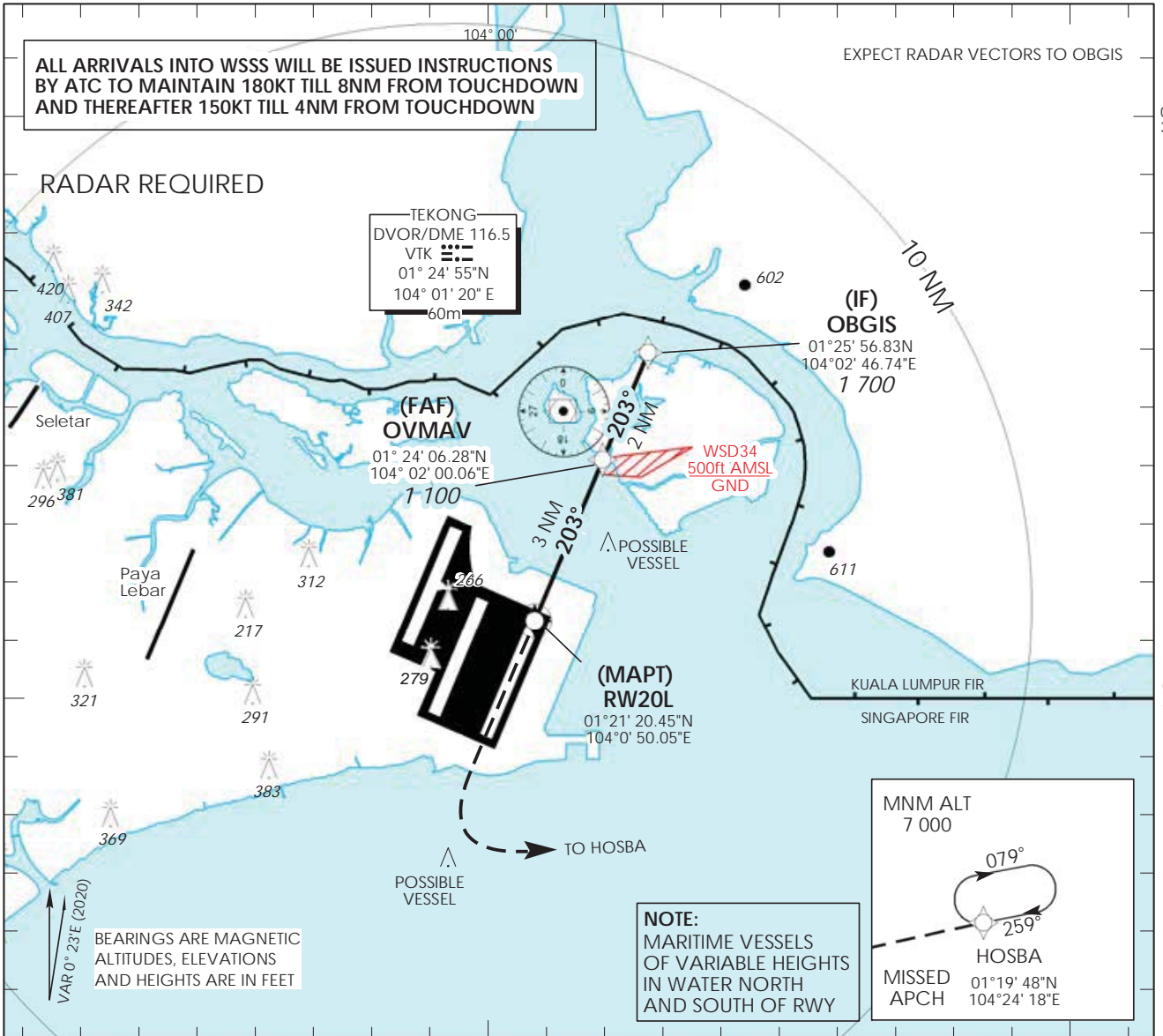
MSA 25 NM  
 from TEKONG DVOR



D-ATIS	AP ID	WSSS
APP	128.6	124.05
TWR	124.6	131.4

**SINGAPORE/ SINGAPORE CHANGI**  
**RNP RWY 20L**

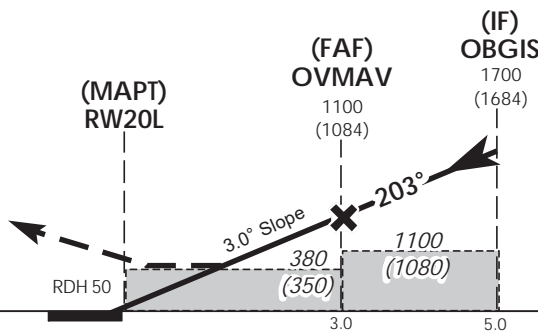
104° 10'



This procedure requires a missed approach climb gradient of 5% (304 ft/NM) until passing 3,000ft.  
 For aircraft which can only achieve a 2.5% (152 ft/NM) climb gradient, the CAT I OCA (OCH) is 1080ft (1050ft).

Transition Level : FL 130  
 Transition Alt : 11 000

**MISSED APPROACH**  
 Climb straight to 1 500ft, turn left climbing to 7 000ft to HOSBA.  
 Hold at HOSBA or AS DIRECTED BY ATC.  
 No turn before MAPt.



MINIMUM TEMPERATURE FOR BARO-VNAV APPROACHES: 5°C

CIRCLING NOT AUTHORIZED

ELEV 16  
 (THR RWY 20L)

		OCA (OCH)			
Category of Aircraft		A	B	C	D
LNAV/VNAV	5%	280 (260)			
LNAV	5%	380 (350)			

Distance		OBGIS			OVMAV	
Altitude (Height)		1700 (1684)			1100 (1084)	
Speed	knots	70	120	150	185	
FAF - MAPT 3.0nm	min : s *	2 : 34	1 : 30	1 : 12	0 : 58	
Rate of descent/GS	ft/min	370	635	795	980	