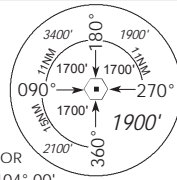


**INSTRUMENT  
APPROACH  
CHART**

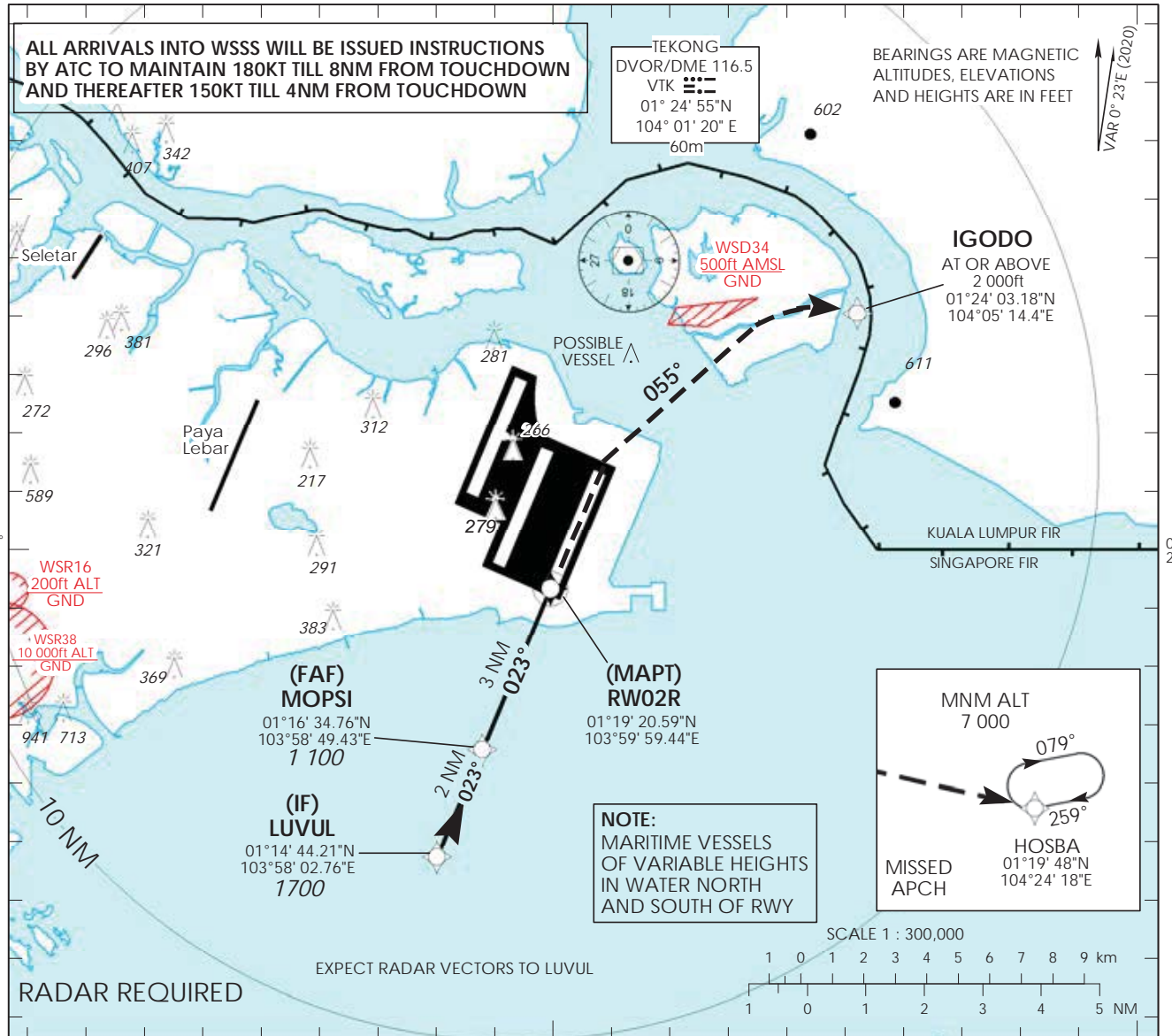
**AERODROME ELEV 22ft**  
HEIGHT RELATED TO  
THR RWY 02R - ELEV 16ft

MSA 25 NM  
from TEKONG DVOR  
104° 00'

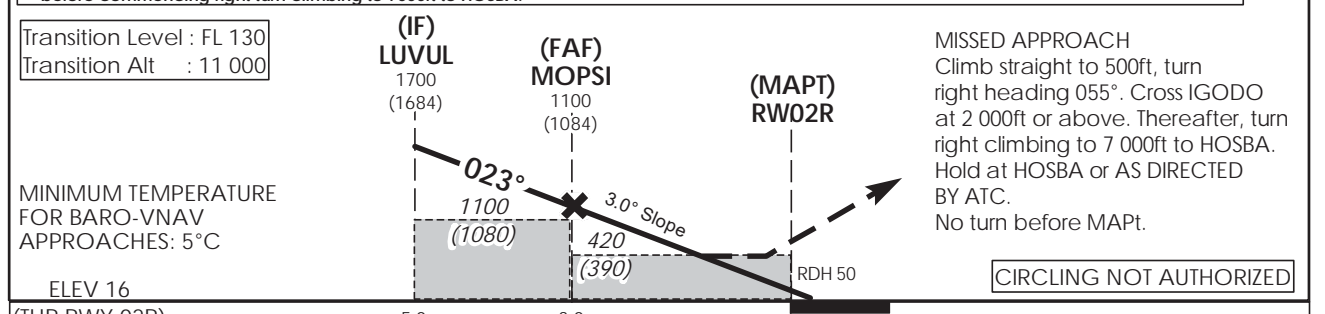


D-ATIS	AP ID WSSS
APP	128.025
TWR	124.05
	124.6
	131.4

**SINGAPORE/  
SINGAPORE CHANGI**  
**RNP RWY 02R**



1. This procedure requires a missed approach climb gradient of 5% (304 ft/NM) until passing 2,000ft. MAX IAS 185kts during turning missed approach.
2. For aircraft which can only achieve a 2.5% (152 ft/NM) climb gradient, the CAT I OCA (OCH) is 820ft (800ft) and aircraft shall climb straight to 1200ft before commencing right turn climbing to 7000ft to HOSBA.



Transition Level : FL 130  
Transition Alt : 11 000

MINIMUM TEMPERATURE FOR BARO-VNAV APPROACHES: 5°C

ELEV 16 (THR RWY 02R)

NAUTICAL MILES FROM RWY THR 02R

		OCA (OCH)			
Category of Aircraft		A	B	C	D
LNAV/VNAV	5%			330 (310)	
LNAV	5%			420 (390)	
Distance		LUVUL		MOPSI	
Altitude (Height)		1700 (1684)		1100 (1084)	
Speed	knots	70	120	150	185
FAF - MAPT 3.0nm	min : s *	2 : 34	1 : 30	1 : 12	0 : 58
Rate of descent/GS	ft/min	370	635	795	980