

STANDARD ARRIVAL CHART
RNAV (GNSS) -
INSTRUMENT (STAR)

ACC 134.4
 APP 124.05
 119.3
 TWR 118.6 / 118.25

TRANSITION ALTITUDE
 11 000ft

D-ATIS AP ID-WSSS
 128.025

SINGAPORE/Singapore Changi
RWY 20R/C/L
OBDOS ONE BRAVO ARRIVAL
OBDOS 1B

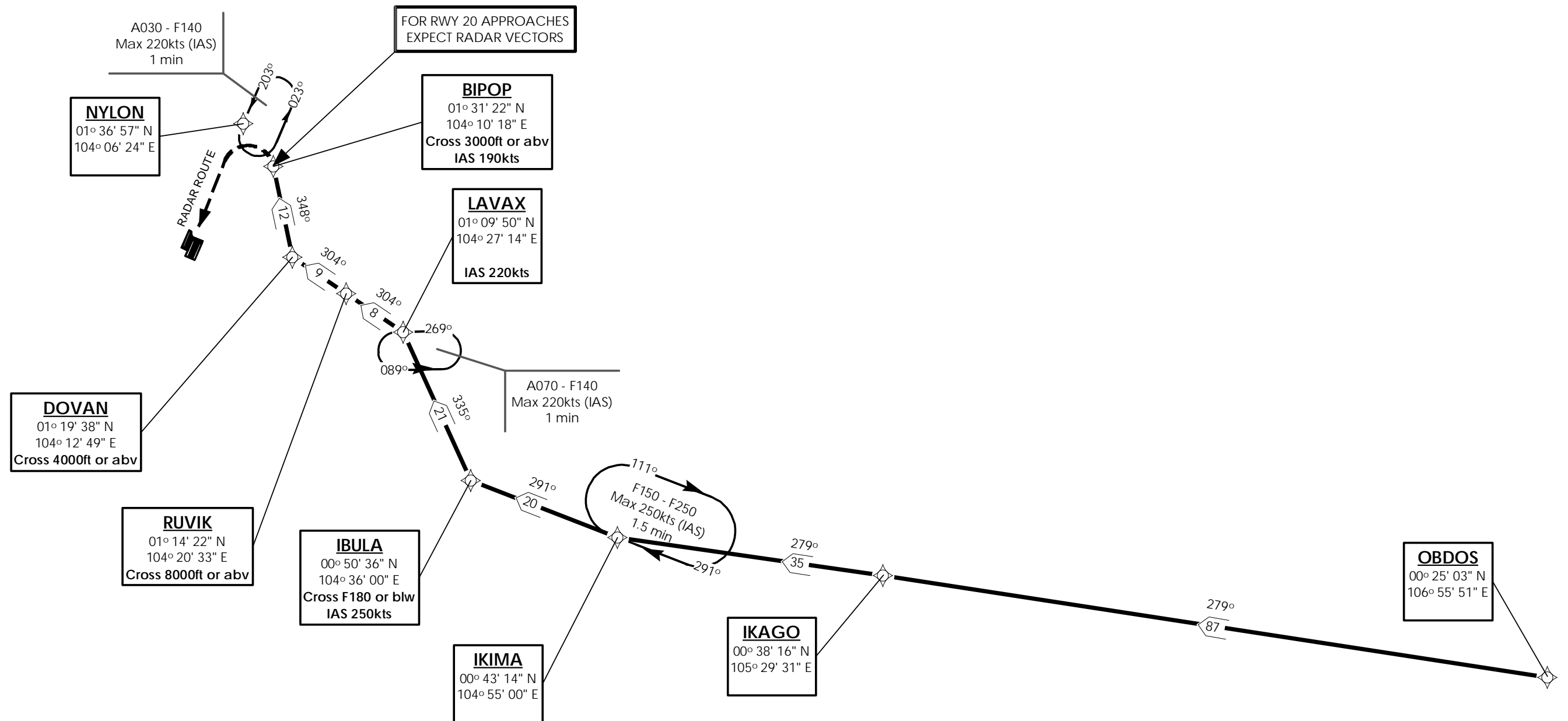
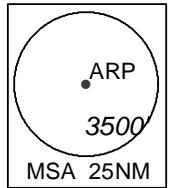
ELEV, ALT IN FEET
 BEARINGS, TRACKS AND
 RADIALS ARE MAGNETIC
 VAR 0°23'E (2020)

DISTANCES IN NM

NOTE: RADAR REQUIRED

NOTE: RNAV-1 NAVIGATION SPECIFICATION GNSS REQUIRED

NOTE: REFER TO BACK PAGE FOR
 - FORMAL AND TABULAR DESCRIPTIONS
 - RADIO COM FAILURE PROCEDURES



NOT TO SCALE