

**STANDARD ARRIVAL CHART
RNAV (GNSS) -
INSTRUMENT (STAR)**

ACC 133.8
APP 124.05
119.3
TWR 118.6 / 118.25

TRANSITION ALTITUDE
11 000ft

D-ATIS AP ID-WSSS
128.025

**SINGAPORE/Singapore Changi
RWY 02L/C/R
ELALO ONE ALPHA ARRIVAL
ELALO 1A**

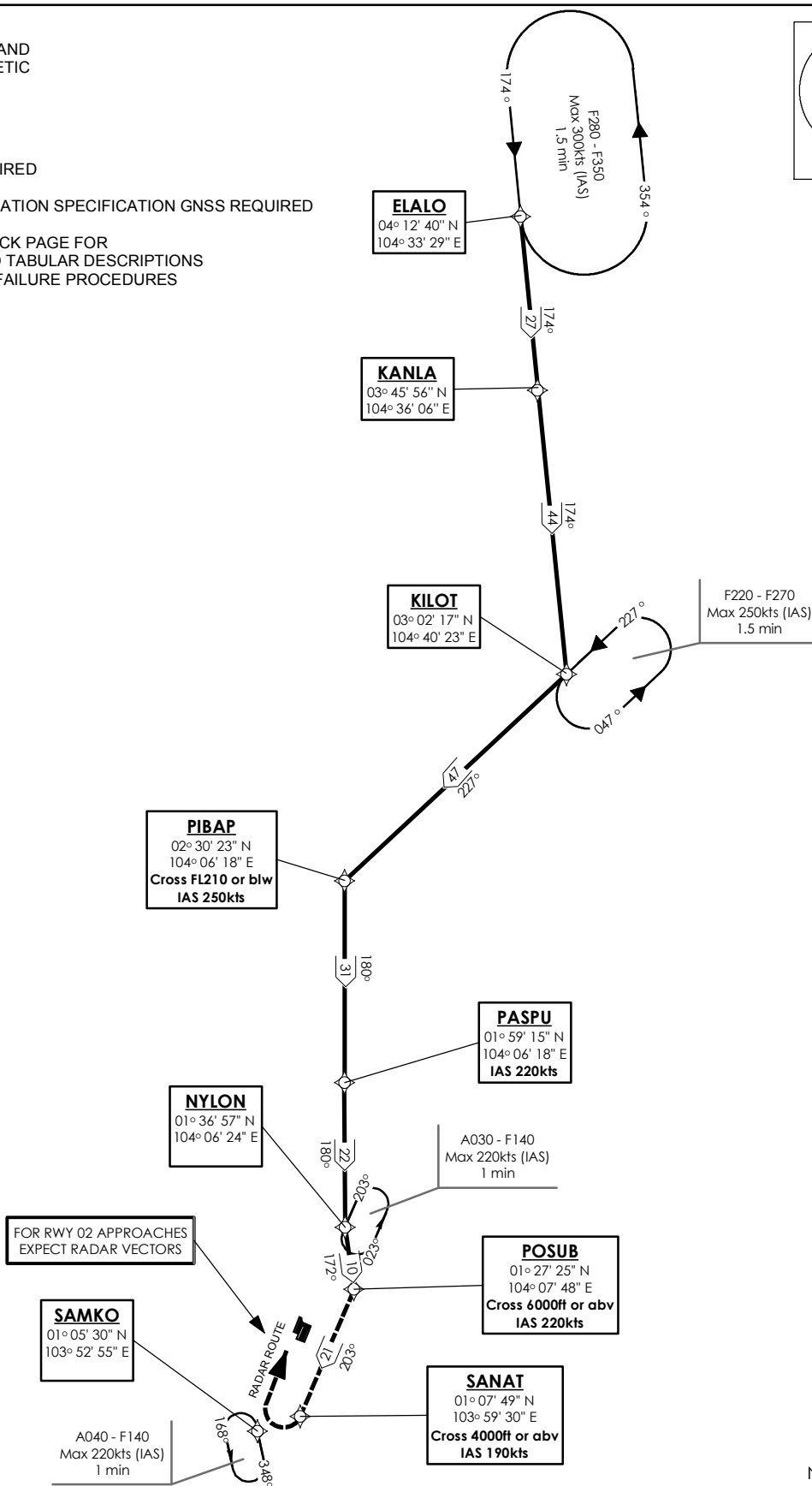
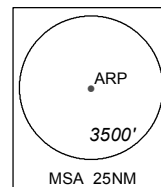
ELEV, ALT IN FEET
BEARINGS, TRACKS AND
RADIALS ARE MAGNETIC
VAR 0°23'E (2020)

DISTANCES IN NM

NOTE: RADAR REQUIRED

NOTE: RNAV-1 NAVIGATION SPECIFICATION GNSS REQUIRED

NOTE: REFER TO BACK PAGE FOR
- FORMAL AND TABULAR DESCRIPTIONS
- RADIO COM FAILURE PROCEDURES



FOR RWY 02 APPROACHES
EXPECT RADAR VECTORS

SAMKO
01° 05' 30" N
103° 52' 55" E

A040 - F140
Max 220kts (IAS)
1 min

NOT TO SCALE