

**STANDARD ARRIVAL CHART  
RNAV (GNSS) -  
INSTRUMENT (STAR)**

ACC 133.8  
APP 124.05  
119.3  
TWR 118.6

TRANSITION ALTITUDE  
11 000ft

D-ATIS AP ID-WSSS  
128.025

**SINGAPORE/Singapore Changi  
RWY 02L/C/R  
LEBAR TWO ALPHA ARRIVAL  
LEBAR 2A**

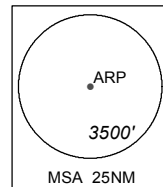
ELEV, ALT IN FEET  
BEARINGS, TRACKS AND  
RADIALS ARE MAGNETIC  
VAR 0°23'E (2020)

DISTANCES IN NM

NOTE: RADAR REQUIRED

NOTE: RNAV-1 NAVIGATION SPECIFICATION GNSS REQUIRED

NOTE: REFER TO BACK PAGE FOR  
- FORMAL AND TABULAR DESCRIPTIONS  
- RADIO COM FAILURE PROCEDURES



**PASPU**  
01° 59' 15" N  
104° 06' 18" E  
IAS 220kts

**PAPA UNIFORM**  
DVOR/DME 115.1  
PU :---  
01° 25' 24" N  
103° 56' 00" E  
60M  
Cross 7,000ft or abv

DEVIATION IS NOT PERMITTED  
BETWEEN SJ AND PU

**WSR38**  
10,000ft ALT  
GND

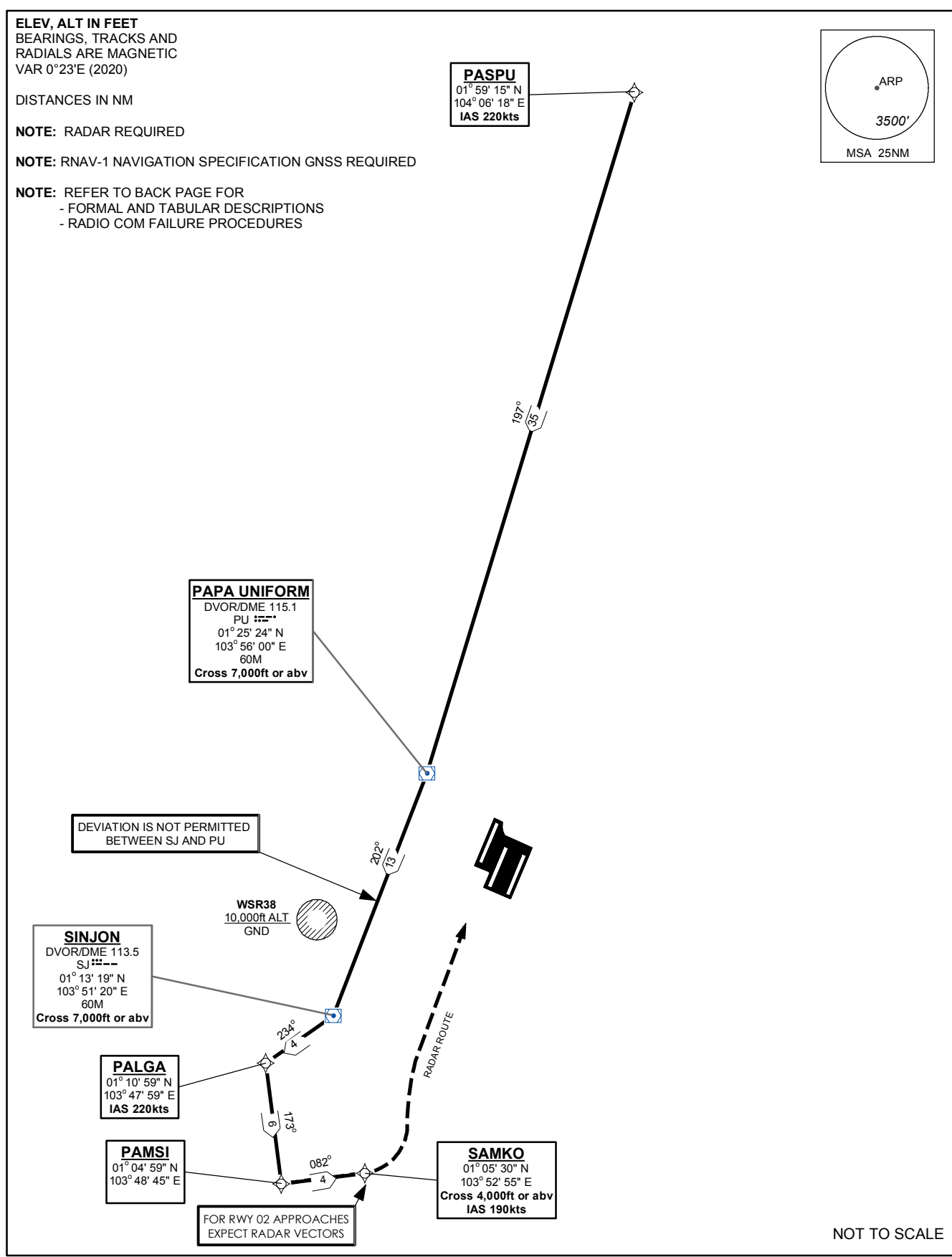
**SINJON**  
DVOR/DME 113.5  
SJ :---  
01° 13' 19" N  
103° 51' 20" E  
60M  
Cross 7,000ft or abv

**PALGA**  
01° 10' 59" N  
103° 47' 59" E  
IAS 220kts

**PAMSI**  
01° 04' 59" N  
103° 48' 45" E

**SAMKO**  
01° 05' 30" N  
103° 52' 55" E  
Cross 4,000ft or abv  
IAS 190kts

FOR RWY 02 APPROACHES  
EXPECT RADAR VECTORS



NOT TO SCALE