

**STANDARD ARRIVAL CHART  
RNAV (GNSS) -  
INSTRUMENT (STAR)**

ACC 133.25  
APP 124.05  
119.3  
TWR 118.6 / 118.25

TRANSITION ALTITUDE  
11 000ft

D-ATIS AP ID-WSSS  
ARR 128.025

**SINGAPORE/Singapore Changi  
RWY 02L/C  
ARAMA ONE ALPHA ARRIVAL  
ARAMA 1A**

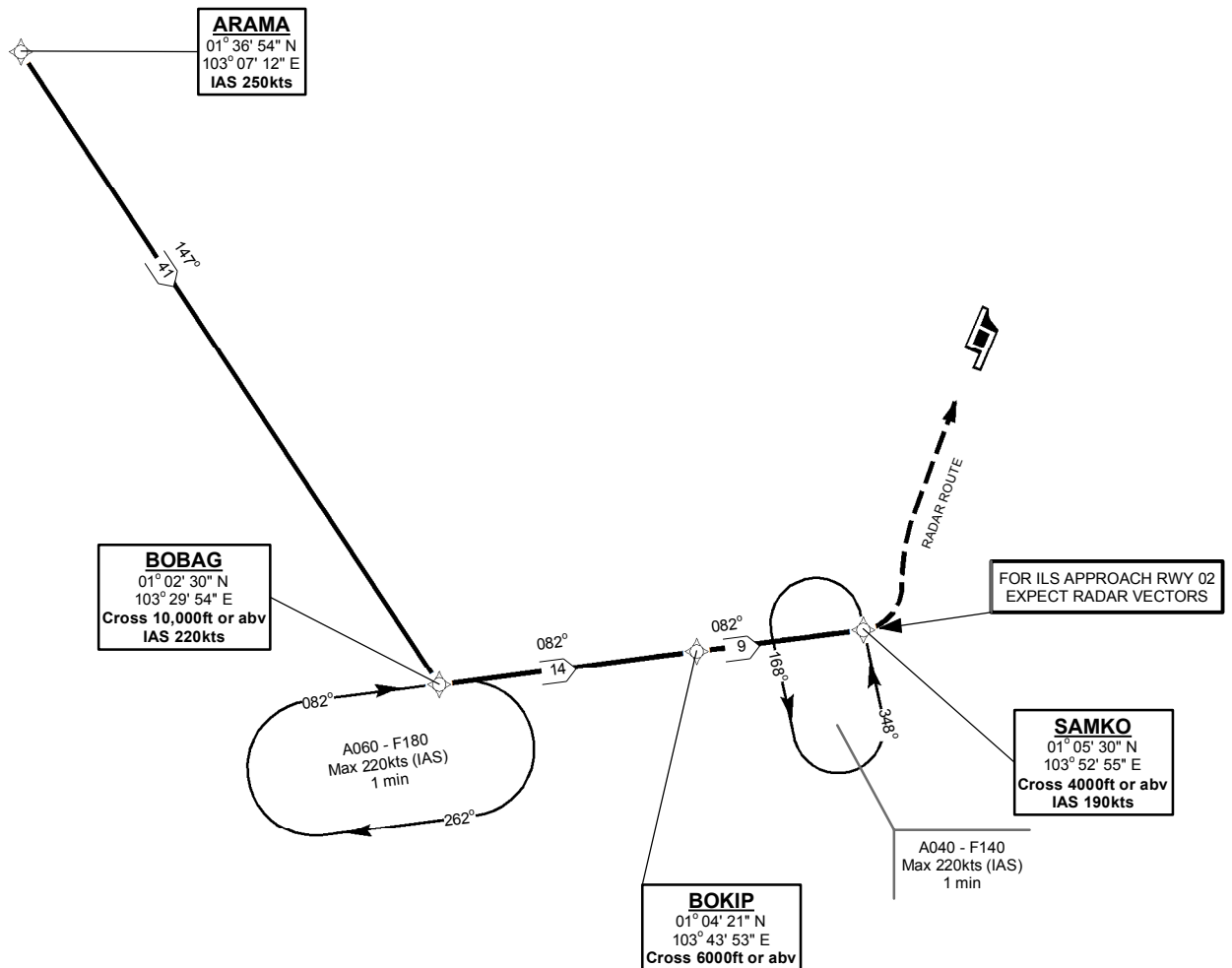
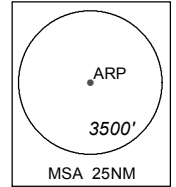
ELEV, ALT IN FEET  
BEARINGS, TRACKS AND  
RADIALS ARE MAGNETIC  
VAR 23'E (2020)

DISTANCES IN NM

NOTE: RADAR REQUIRED

NOTE: RNAV-1 NAVIGATION SPECIFICATION GNSS REQUIRED

NOTE: REFER TO BACK PAGE FOR  
- FORMAL AND TABULAR DESCRIPTIONS  
- RADIO COM FAILURE PROCEDURES



## ARAMA 1A (STAR) RNAV GNSS RWY 02L/02C - DESCRIPTIONS

### Formal & Abbreviated Descriptions

Formal Description	Abbreviated Description	Path Terminator	Fly-Over required
From ARAMA, speed 250kts. To BOBAG at or above 10000ft, speed 220kts, turn left. To BOKIP at or above 6000ft. To SAMKO at or above 4000ft, speed 190kts.	ARAMA [K250] -	IF	N
	BOBAG [A100+; K220; L] -	TF	N
	BOKIP [A060+] -	TF	N
	SAMKO [A040+; K190]	TF	N

### Tabular Descriptions

Path Term	Waypoint Name	Fly-Over	Course °M(°T)	Magnetic Variation	Turn Direction	Altitude	Speed Limit	Navigation Spec
IF	ARAMA	-	-	-0.5	-	-	K250	RNAV1
TF	BOBAG	-	147(147.5)	-0.5	L	A100+	K220	RNAV1
TF	BOKIP	-	082(082.5)	-0.5	-	A060+	-	RNAV1
TF	SAMKO	-	082(082.8)	-0.5	-	A040+	K190	RNAV1

## RADIO COMMUNICATIONS FAILURE PROCEDURE

1	<b>SET TRANSPONDER TO MODE A/C CODE 7600</b>
2	<p><b>When cleared via ARAMA 1A by Singapore ATC</b></p> <p>(a) Maintain last assigned flight level or altitude and proceed on ARAMA 1A to SAMKO</p> <p>(b) From SAMKO commence descent and carry out appropriate landing procedure for RWY 02 as close as possible to EAT or ETA</p> <p>(c) If unable to effect a landing, refer to Singapore AIP for missed approach procedure</p>
3	<p><b>No clearance or instruction received from Singapore ATC</b></p> <p>- Refer to Singapore AIP for radio communications failure procedure</p>