

STANDARD ARRIVAL CHART
RNAV (GNSS) -
INSTRUMENT (STAR)

ACC 134.4
 APP 124.05
 119.3
 TWR 118.6 / 118.25

TRANSITION ALTITUDE
 11 000ft

D-ATIS AP ID-WSSS
 128.025

SINGAPORE/Singapore Changi
RWY 02L/C
SURGA ONE ALPHA ARRIVAL
SURGA 1A

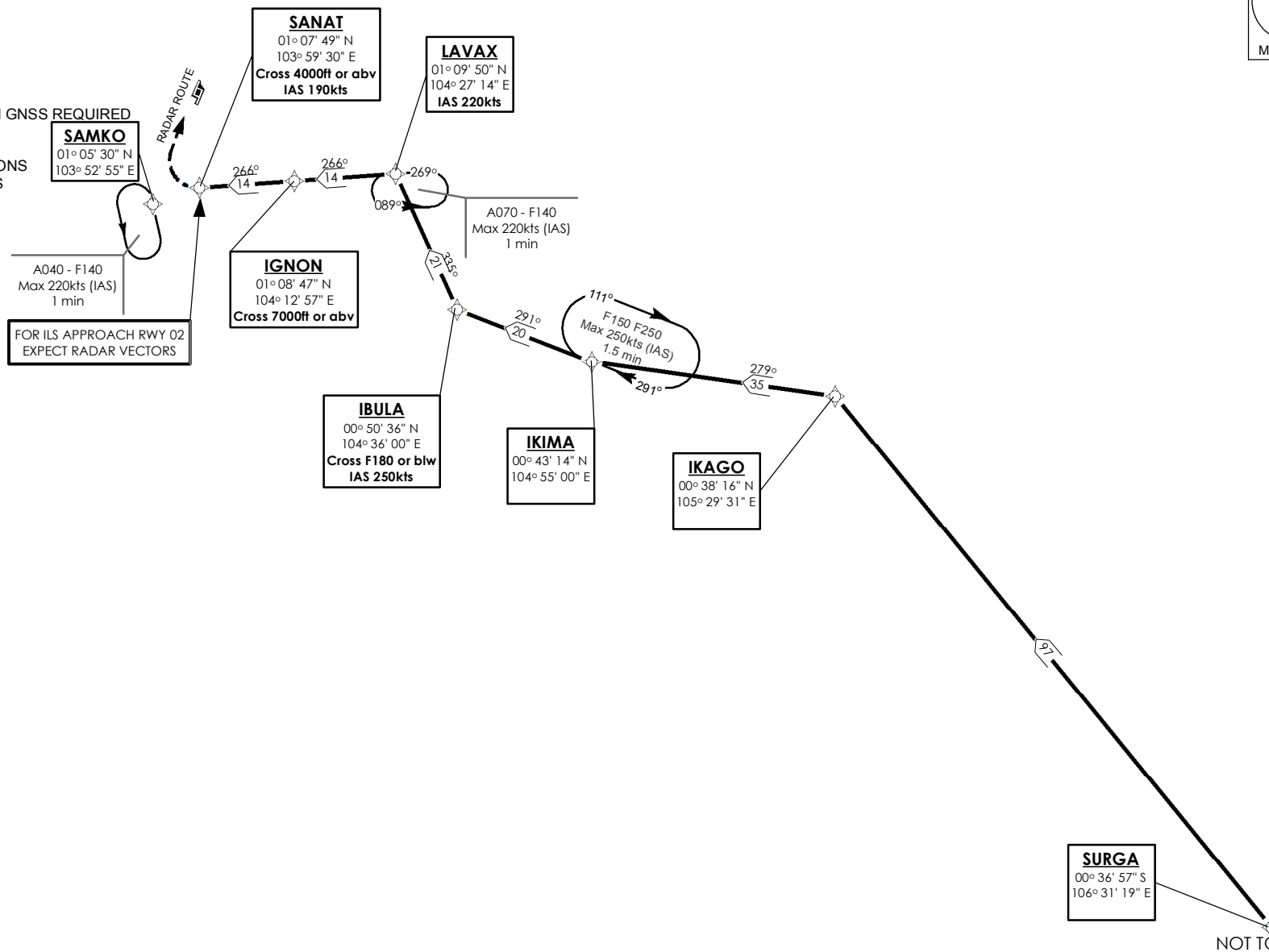
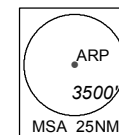
ELEV, ALT IN FEET
 BEARINGS, TRACKS AND
 RADIALS ARE MAGNETIC
 VAR 23°E (2020)

DISTANCES IN NM

NOTE: RADAR REQUIRED

NOTE: RNAV-1 NAVIGATION SPECIFICATION GNSS REQUIRED

NOTE: REFER TO BACK PAGE FOR
 - FORMAL AND TABULAR DESCRIPTIONS
 - RADIO COM FAILURE PROCEDURES



NOT TO SCALE

SURGA 1A (STAR) RNAV GNSS RWY 02L/02C - DESCRIPTIONS

Formal & Abbreviated Descriptions

| Formal Description | Abbreviated Description | Path Terminator | Fly-Over required |
|---|---------------------------|-----------------|-------------------|
| From SURGA. To IKAGO, turn left. To IKIMA, turn right. To IBULA at or below FL180, speed 250kts, turn right. To LAVAX, speed 220kts, turn left. To IGNON at or above 7000ft. To SANAT at or above 4000ft, speed 190kts. | SURGA - | IF | N |
| | IKAGO [L] - | TF | N |
| | IKIMA [R] - | TF | N |
| | IBULA [FL180-; K250; R] - | TF | N |
| | LAVAX [K220; L] - | TF | N |
| | IGNON [A070+] - | TF | N |
| | SANAT [A040+; K190] | TF | N |

Tabular Descriptions

| Path Term | Waypoint Name | Fly-Over | Course °M(°T) | Magnetic Variation | Turn Direction | Altitude | Speed Limit | Navigation Spec |
|-----------|---------------|----------|---------------|--------------------|----------------|----------|-------------|-----------------|
| IF | SURGA | - | - | -0.5 | - | - | - | RNAV1 |
| TF | IKAGO | - | 320(320.4) | -0.5 | L | - | - | RNAV1 |
| TF | IKIMA | - | 279(279.5) | -0.5 | R | - | - | RNAV1 |
| TF | IBULA | - | 291(291.1) | -0.5 | R | FL180- | K250 | RNAV1 |
| TF | LAVAX | - | 335(335.4) | -0.5 | L | - | K220 | RNAV1 |
| TF | IGNON | - | 266(266.5) | -0.5 | - | A070+ | - | RNAV1 |
| TF | SANAT | - | 266(266.5) | -0.5 | - | A040+ | K190 | RNAV1 |

RADIO COMMUNICATIONS FAILURE PROCEDURE

| | |
|----------|--|
| 1 | SET TRANSPONDER TO MODE A/C CODE 7600 |
| 2 | <p>When cleared via SURGA 1A by Singapore ATC</p> <p>(a) Maintain last assigned flight level or altitude and proceed on SURGA 1A to SANAT, then direct to SAMKO</p> <p>(b) From SAMKO commence descent and carry out appropriate landing procedure for RWY 02 as close as possible to EAT or ETA</p> <p>(c) If unable to effect a landing, refer to Singapore AIP for missed approach procedure</p> |
| 3 | <p>No clearance or instruction received from Singapore ATC</p> <p>- Refer to Singapore AIP for radio communications failure procedure</p> |