

**STANDARD ARRIVAL CHART**  
**RNAV (GNSS) -**  
**INSTRUMENT (STAR)**

ACC 133.8  
APP 124.05  
119.3  
TWR 118.6

TRANSITION ALTITUDE  
11 000ft

D-ATIS AP ID-WSSS  
128.025

**SINGAPORE/Singapore Changi**  
**RWY 02L**  
**LEBAR TWO ALPHA ARRIVAL**  
**LEBAR 2A**

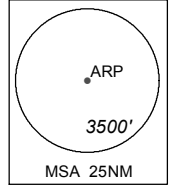
**ELEV, ALT IN FEET**  
BEARINGS, TRACKS AND  
RADIALS ARE MAGNETIC  
VAR 23°E (2020)

DISTANCES IN NM

**NOTE:** RADAR REQUIRED

**NOTE:** RNAV-1 NAVIGATION SPECIFICATION GNSS REQUIRED

**NOTE:** REFER TO BACK PAGE FOR  
- FORMAL AND TABULAR DESCRIPTIONS  
- RADIO COM FAILURE PROCEDURES



**PASPU**  
01° 59' 15" N  
104° 06' 18" E  
IAS 220kts

**PAPA UNIFORM**  
DVOR/DME 115.1  
PU :---  
01° 25' 24" N  
103° 56' 00" E  
60M  
Cross 7,000ft or abv

DEVIATION IS NOT PERMITTED  
BETWEEN SJ AND PU

**WSR38**  
10,000ft ALT  
GND

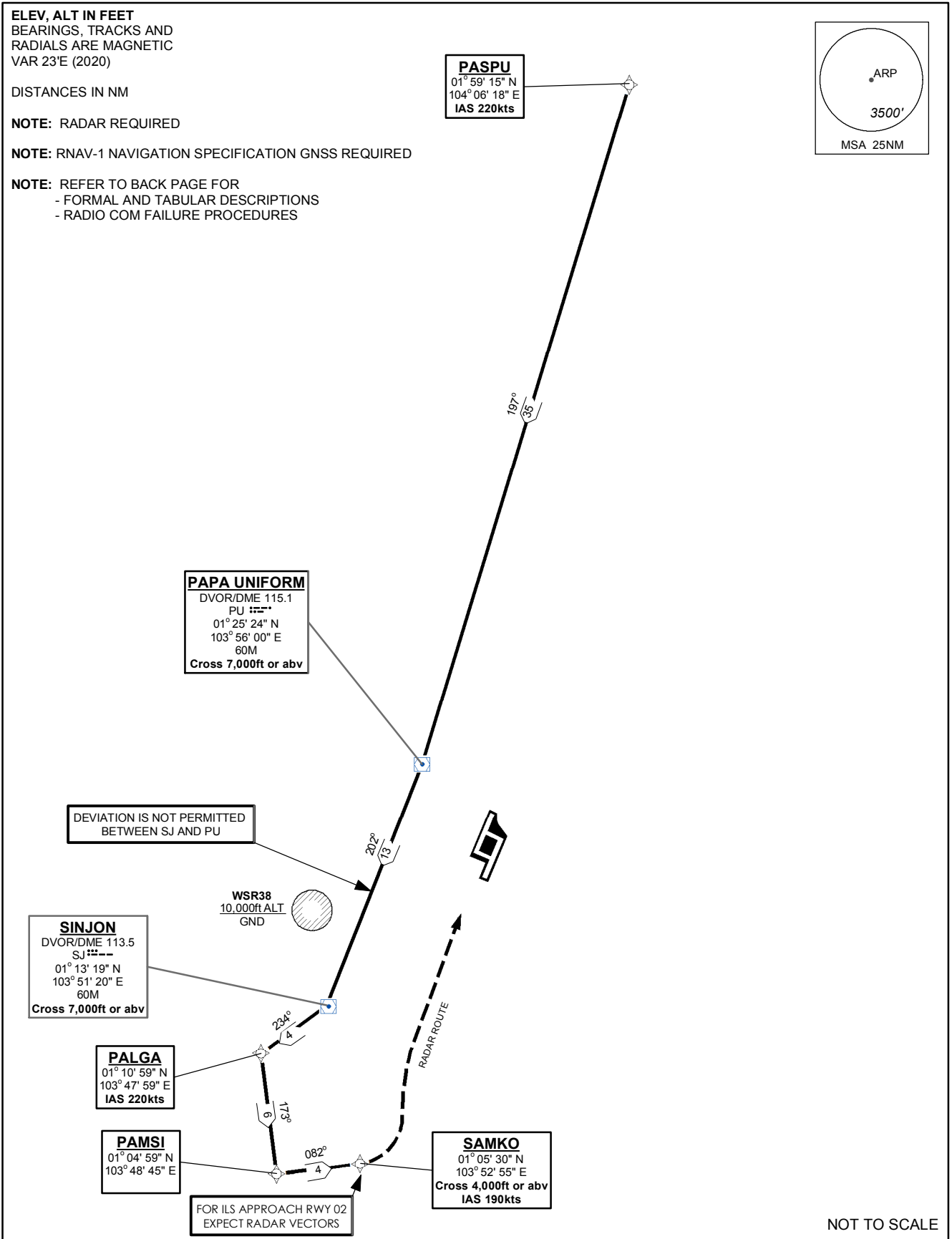
**SINJON**  
DVOR/DME 113.5  
SJ :---  
01° 13' 19" N  
103° 51' 20" E  
60M  
Cross 7,000ft or abv

**PALGA**  
01° 10' 59" N  
103° 47' 59" E  
IAS 220kts

**PAMSI**  
01° 04' 59" N  
103° 48' 45" E

**SAMKO**  
01° 05' 30" N  
103° 52' 55" E  
Cross 4,000ft or abv  
IAS 190kts

FOR ILS APPROACH RWY 02  
EXPECT RADAR VECTORS



NOT TO SCALE

## LEBAR 2A (STAR) RNAV GNSS RWY 02L - DESCRIPTIONS

### Formal & Abbreviated Descriptions

Formal Description	Abbreviated Description	Path Terminator	Fly-Over required
From PASPU, speed 220kts. To PU at or above 7000ft, turn right. To SJ at or above 7000ft, turn right. To PALGA, speed 220kts, turn left. To PAMSI, turn left. To SAMKO at or above 4000ft, speed 190kts.	PASPU [K220] -	IF	N
	PU [A070+; R] -	TF	N
	SJ [A070+; R] -	TF	N
	PALGA [K220; L] -	TF	N
	PAMSI [L] -	TF	N
	SAMKO [A040+; K190]	TF	N

### Tabular Descriptions

Path Term	Waypoint Name	Fly-Over	Course °M(°T)	Magnetic Variation	Turn Direction	Altitude	Speed Limit	Navigation Spec
IF	PASPU	-	-	-0.5	-	-	K220	RNAV1
TF	PU	-	197(197.5)	-0.5	R	A070+	-	RNAV1
TF	SJ	-	202(202.5)	-0.5	R	A070+	-	RNAV1
TF	PALGA	-	234(234.5)	-0.5	L	-	K220	RNAV1
TF	PAMSI	-	173(173.5)	-0.5	L	-	-	RNAV1
TF	SAMKO	-	082(082.5)	-0.5	-	A040+	K190	RNAV1

## RADIO COMMUNICATIONS FAILURE PROCEDURE

1	<b>SET TRANSPONDER TO MODE A/C CODE 7600</b>
2	<p><b>When cleared via LEBAR 2A by Singapore ATC</b></p> <p>(a) Maintain last assigned flight level or altitude and proceed on LEBAR 2A to SAMKO</p> <p>(b) From SAMKO commence descent and carry out appropriate landing procedure for RWY 02L as close as possible to EAT or ETA</p> <p>(c) If unable to effect a landing, refer to Singapore AIP for missed approach procedure</p>
3	<p><b>No clearance or instruction received from Singapore ATC</b></p> <p>- Refer to Singapore AIP for radio communications failure procedure</p>