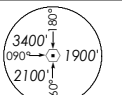


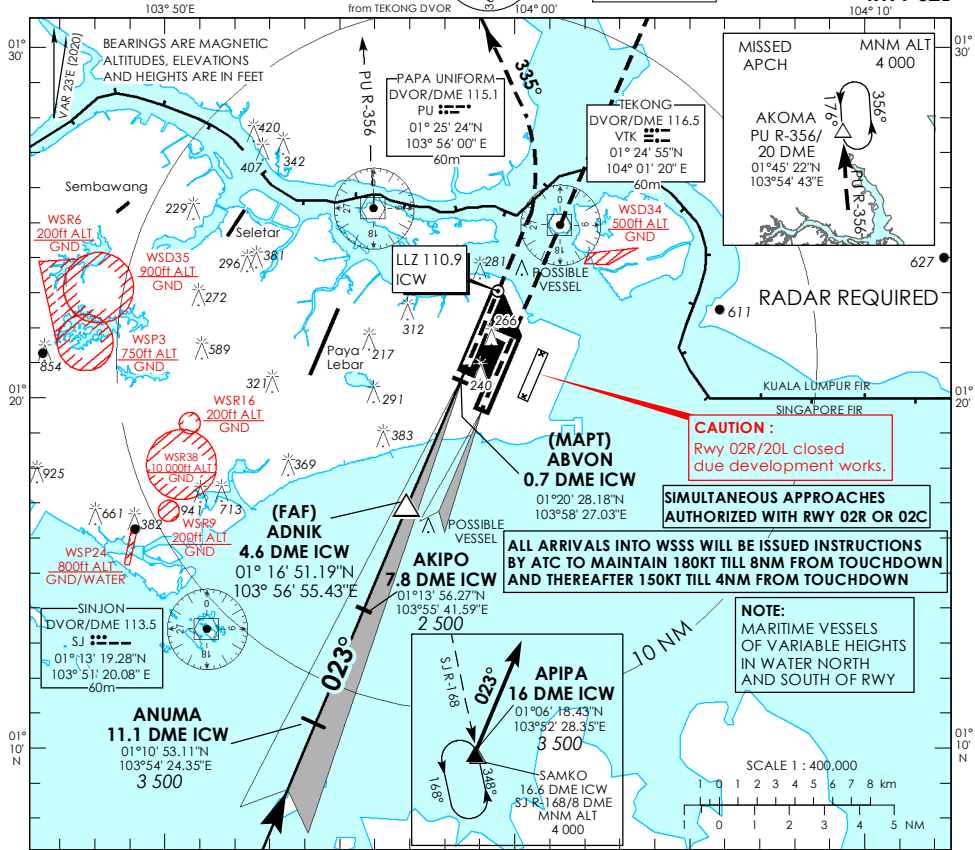
INSTRUMENT APPROACH CHART - ICAO

AERODROME ELEV **22ft**
HEIGHT RELATED TO
THR RWY 02L - ELEV **22ft**



D-ATIS AP ID WSSS	128.025
APP	124.05
TWR	119.3
	118.6
	118.25

SINGAPORE/ SINGAPORE CHANGI ICW ILS/DME RWY 02L

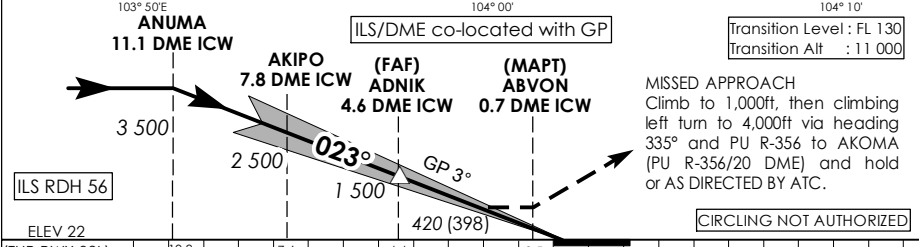


CAUTION:
Rwy 02R/20L closed due development works.

SIMULTANEOUS APPROACHES AUTHORIZED WITH RWY 02R OR 02C

ALL ARRIVALS INTO WSSS WILL BE ISSUED INSTRUCTIONS BY ATC TO MAINTAIN 180KT TILL 8NM FROM TOUCHDOWN AND THEREAFTER 150KT TILL 4NM FROM TOUCHDOWN

NOTE:
MARITIME VESSELS OF VARIABLE HEIGHTS IN WATER NORTH AND SOUTH OF RWY



Transition Level: FL 130
Transition Alt : 11 000

MISSED APPROACH
Climb to 1,000ft, then climbing left turn to 4,000ft via heading 335° and PU R-356 to AKOMA (PU R-356/20 DME) and hold or AS DIRECTED BY ATC.

* TIMING NOT AUTHORIZED WHEN GP INOP

Category of Aircraft	OCA (OCH)					
	A	B	C	D	D _L	
Straight-in	CAT I ILS	173 (151)	187 (165)	203 (181)	216 (194)	219 (197)
	CAT II ILS	88 (66)	98 (76)	108 (86)	127 (105)	127 (105)
	GP INOP	420 (398)				
Distance	4 DME		3 DME		2 DME	
Altitude (Height)	1290 (1268)		970 (948)		660 (638)	
Speed	knots	70	120	150	185	
FAF - MAPT 3.9nm	min : s *	3 : 21	1 : 57	1 : 34	1 : 16	
Rate of descent/GS	ft/min	370	635	795	980	