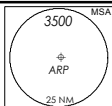


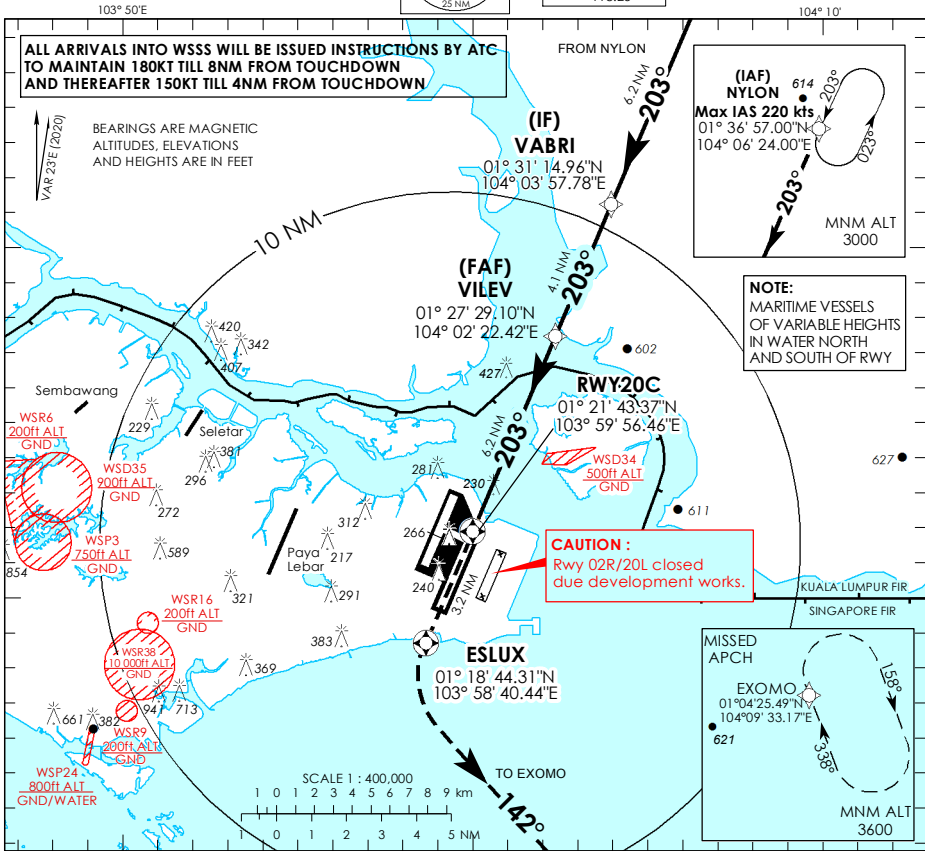
INSTRUMENT APPROACH CHART - ICAO

AERODROME ELEV **22ft**
HEIGHT RELATED TO
THR RWY 20C - ELEV **15ft**



D-ATIS	AP ID	WSSS
APP	128.025	
TWR	124.05	
	119.3	
	118.6	
	118.25	

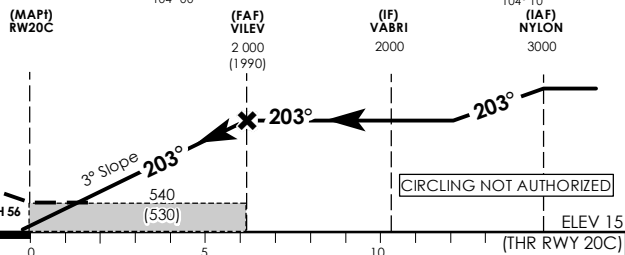
**SINGAPORE/ SINGAPORE CHANGI
RNAV (GNSS) RWY 20C**



Transition Level : FL 130
Transition Alt : 11 000

MISSED APPROACH:
CLIMB DIRECT TO ESLUX.
TURN LEFT TO MAGNETIC COURSE 142° TO JOIN THE HOLDING AT 3600FT OR ABOVE OR AS DIRECTED BY ATC.

MINIMUM TEMPERATURE FOR BARO-VNAV APPROACHES: 5°C



Category of Aircraft	NAUTICAL MILES FROM DTHR RWY 20C							
	OCA (OCH)							
	A	B	C	D				
LNAV/VNAV	2.5%	490 (480)						
LNAV	2.5%	540 (530)						
Fix	NYLON	VABRI	VILEV	RW20C	ESLUX	EXOMO		
Altitude (Height)	3000 (2985)	2000 (1985)	2000 (1985)	540 (525)	540 (525)	3600 (3585)		
Speed	knots	80	100	120	140	160	180	
FAF - MAP 6.2 nm	min : s	4 : 39	3 : 44	3 : 06	2 : 40	2 : 20	2 : 04	
Rate of descent/GS	ft/min	425	531	637	743	849	955	