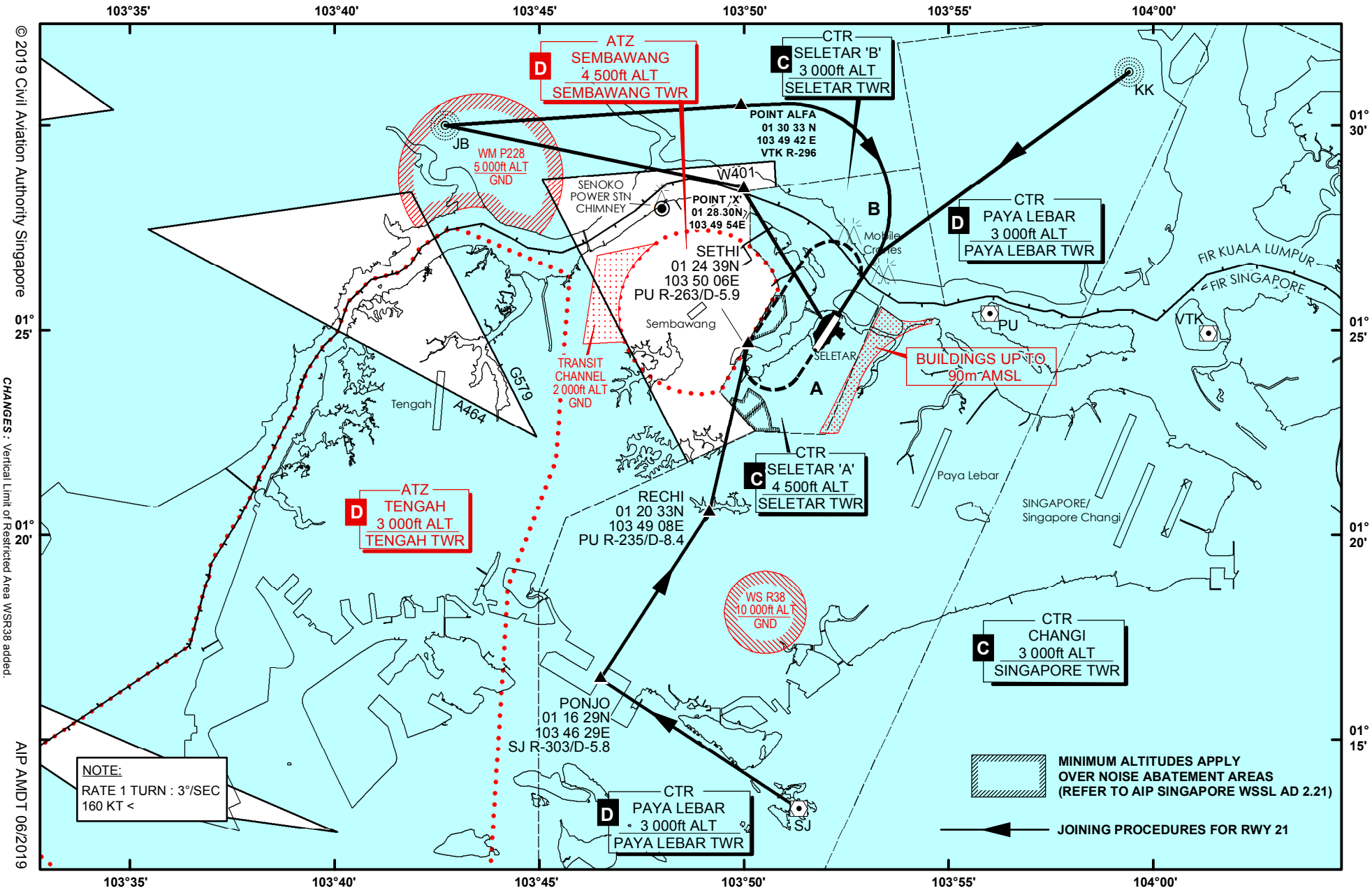


SELETAR AERODROME JOINING PROCEDURE (IFR FLIGHTS) FROM JB, KK AND SJ - RUNWAY 21



© 2019 Civil Aviation Authority Singapore

CHANGES : Vertical Limit of Restricted Area WSR38 added

AIP AMDT 06/2019

AIP Singapore

AD-2-WSSL-IFR-2
10 OCT 2019